

# Product Information Guide

Confidential Information for Retailers and Fleet Operators only



# ANTARA

Every effort has been made to ensure that the contents of this publication were accurate and up-to-date at the time of going to press (May 2007). Vauxhall vehicles are equipped with components manufactured by various General Motors operating units and outside suppliers. The Company reserves the right to alter specifications and withdraw products from sale without notice. Any such alterations will be notified to Vauxhall retailers at the earliest opportunity. The colours reproduced in this brochure may vary slightly from the actual paint colour or trim material due to the limitations of the printing process. As part of Vauxhall's policy of environmental care, this brochure is printed on paper manufactured using Elemental Chlorine Free pulps from specially farmed, sustainable timber resources. All rights reserved. No part of this publication may be reproduced in any form or by any means, without the prior written permission of Vauxhall Motors Limited. Where possible, information relating to competitor vehicles has been taken from the relevant manufacturer's own literature current at the time of going to press. Where this has not been possible, the relevant source has been quoted.





## ANTARA.

**Its styling derived from the three-door GTC crossover concept car first unveiled at the Frankfurt Motor Show back in September 2005, Antara combines the looks, functionality and style of an estate car with the ruggedness and performance of a Sports Utility Vehicle (SUV).**

With its monocoque construction, electronically controlled intelligent four-wheel drive system and compact dimensions (similar in length to an Astra Estate) Antara is not a direct replacement for Frontera; rather, it's a powerful entrant in the so-called 'soft-roader' segment, where visual impact, lifestyle image and everyday driving dynamics are every bit as important as ability off-road.

On sale from 28 July 2007, Antara will be offered in a choice of three trim levels. Engine choice comprises two advanced units, a 2.4i 16v petrol engine producing 140PS and a 2.0CDTi 16v common rail turbo diesel unit delivering 150PS.

*Some of the models shown in this Product Information Guide include options and accessories available at extra cost. And not all of the features described are available on every model. So please check with the specification section for further details. From time to time, we also offer alternative Antara models such as Special Editions, which are featured in separate literature or can be found on the Vauxhall website: [www.vauxhall.co.uk](http://www.vauxhall.co.uk)*

Market overview	4
Exterior styling	6
Interior features	10
Versatility	16
Safety and security	18
Chassis technology	20
Powertrain	24
Model range	26
Styling accessories	32
Accessories	34
Colours and trims	36
Competitors	38
Equipment	48
Technical data	52

## MARKET OVERVIEW.

With the launch of Antara, Vauxhall becomes one of the first European volume marques to enter the mainstream off-road/SUV segment.

*“With the Antara, we’ve translated the GTC concept’s exciting design language into a five-door, five-seat production crossover with a spacious, versatile interior.”*

Bryan Nesbitt,  
Executive Director Design, GM Europe



Very much in the ‘soft-roader’ class, the new vehicle is developed and built alongside the forthcoming Chevrolet Captiva model, utilising the same platform and basic structure as its sister vehicle. However, as the detailed analysis on page 38 makes clear, there are significant differences between the two cars.

### Background

Traditionally, the off-road segment consisted of vehicles fulfilling a very specific and functional need; 4x4 capability and high ground clearance were very much the entry tickets for the segment. Now the 4x4 *per se* is seen as altogether more fun, ‘trendy’ and lifestyle-oriented, often something of a fashion accessory.

Sales reflect this change in emphasis. Ten years ago the off-road segment represented 4.1% of the total UK market; by 2006 that figure had grown to 7.66%. Although registrations decreased

slightly last year as buyers awaited the arrival of new models, sales are expected to rise again in 2007 as those models come on stream.

Indeed, the off-road/SUV segment in Western and Central Europe has doubled in the last five years and today is larger than the mini, coupé/cabrio, large and family estate segments.

Although the established off-road market (i.e. vehicles like the Toyota Landcruiser) is itself pretty flat and represents no more than 22% of the 4x4 segment volume overall, the major growth has come from the mainstream ‘Fun and Fashion’ SUVs which now account for some 47% of the segment (premium brands make up the remaining 31%). From a sales perspective, the typical retail/fleet mix of the ‘Fun and Fashion’ set is 67%/33%. Diesel models dominate the sub-segment, with a 63.8%/36.2% split between diesel and petrol vehicles. A higher than average share of automatics is also evident.

### Redefining the segment

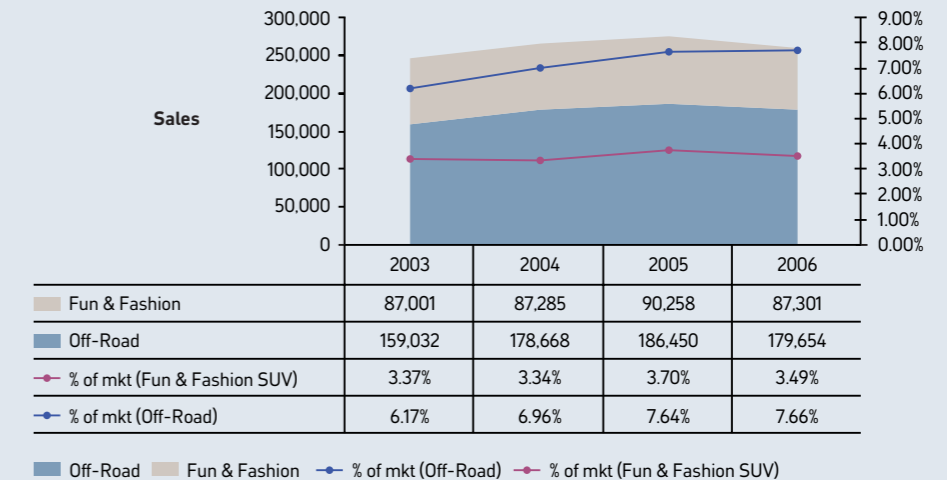
Antara is very much part of this ‘Fun and Fashion’ sector, occupying the fastgrowing medium SUV sub-segment which offers the highest market potential in coming years. Vehicles within the group are clearly defined by size, ranging in length from 4.45m to 4.70m. At just 4.57m Antara takes up little more space than a medium-sized car like an Astra Estate.

Antara’s entry into the market follows a flurry of activity in the SUV arena. More than 20 new or facelifted models were introduced in 2006 alone, with major competitors now including the new Honda CRV. Possibly the biggest rival to watch out for is the new Toyota RAV4, currently Europe’s best selling SUV. This recently moved up from the small sub-segment, thereby posing a distinct threat to Antara.

The second tier of competition includes Kia’s Sorento and the Hyundai Sante Fe. Plus the Nissan X-Trail and Land Rover’s Freelander 2. To a lesser extent, the Mitsubishi Outlander and the Hyundai Tucson can also be seen as presenting a challenge.

2007 will see the launch of further competitors such as the Renault Koleos and the Peugeot 4007, with the Citroën C-Crosser appearing later in the year. A replacement for the Nissan X-Trail is also expected around the same time.

### SUV/Off-Road Segment in the UK



### So you think you know SUVs...?

Popular wisdom has it that SUVs are large, cumbersome vehicles which are expensive to run, less fun to drive and more dangerous to pedestrians than other cars.

**1. Myth.** SUVs are larger than conventional cars.

At 4576mm long, Antara is less than 2.5 inches longer than Astra Estate. It’s also shorter than Vectra and other saloon cars such as the Ford Mondeo (4731mm) and Audi A4 (4586mm). So it’s easy to park and easy to manoeuvre around town. The standard front and rear parking distance sensors on SE models help here, too.

**2. Myth.** SUVs are more dangerous to pedestrians than conventional cars.

Antara’s EuroNCAP two-star pedestrian safety rating is the same as for conventional passenger cars such as Astra and the new MINI, and better than some small cars like the Volvo C30.

**3. Myth.** SUVs aren’t fun to drive.

Test drive Antara for yourself, then see how you feel! The sports suspension has been specifically designed to combine agile, sporty handling with outstanding ride comfort and a high degree of active safety.

**4. Myth.** SUVs are expensive to own.


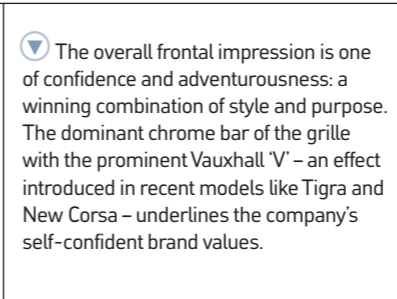

Antara features an intelligent four-wheel drive system. Around town, it runs in front-wheel drive mode, which aids economy; four-wheel drive only engages when conditions demand better traction.

Whilst fuel costs may certainly be a little higher than for a comparably engine mid-sized hatchback or saloon, stronger anticipated residual values mean that the potential Whole Life Costs for Antara over a typical 3 year/60,000 mile period can actually be lower. Competitive insurance groupings and Vauxhall’s keen servicing pricing help here, too.



## ROBUST STANCE – ELEGANT SHAPE.

Robust yet elegant, the frontal aspect of the new Antara immediately identifies it as a member of the Vauxhall family. The dynamic V shape, integrating the grille treatment with the sharply creased bonnet line and subtly curved A-pillars, is very reminiscent of recent models like Astra. Moreover the lower protection mouldings – featuring a distinctive silver skid plate – emphasise that Antara is a genuine crossover vehicle with appreciable off-road capability.

	<p>▶ <b>Headlights.</b> The ease with which the wrap-around headlights blend into the lines of the front wings is a visual highpoint when viewed from the front three-quarter. The combination of 3D-style projection features and chrome-effect surrounds is both neat and purposeful.</p>	
<p>▶ The overall frontal impression is one of confidence and adventurousness: a winning combination of style and purpose. The dominant chrome bar of the grille with the prominent Vauxhall 'V' – an effect introduced in recent models like Tigra and New Corsa – underlines the company's self-confident brand values.</p>		<p>▶ Unique air vents on the front wings – just ahead of the doors – give Antara a real SUV style accent and work visually with the short front and rear overhangs to emphasise the poised and purposeful stance of the car.</p>
	<p>▶ Viewed from the front, the powerful, broad shoulders, dynamically curved side pillars and glass, and aerodynamically shaped door mirrors give Antara an imposing shape.</p> <p>The deep front lower bumper valance is carefully sculpted to underline Antara's forceful stance. The fog lights are well surrounded and protected, while the tough skid plate strikes a dynamic note, further emphasising the car's "go-anywhere" character.</p>	



## UNMISTAKABLE CHARACTER.

**Rear styling.** Viewed from the rear, the dynamics of the new Antara achieve a symmetry that's unique in this class. Tough but subtly proportioned, the gently rounded design cues neatly draw together the strong beltline, rising waistline, and tapering roofline, producing a smooth and harmonious effect. The overriding impression is of an imposing, well-built and unmistakably adventurous vehicle.

▶ **Rear styling.** Antara's strong and uncluttered rear styling is complemented by the slender, gently falling roofline and pronounced D-pillars. Note how the rear effectively 'wraps around', producing an outward impression of strength.



▼ **Rear window.** The almost panoramic curvature of the rear window is not only sculpturally sophisticated – it further adds to the dramatic rear lines by concealing the rear hatch frame. Below it, the generously sized and centrally placed Vauxhall badge – located just above the number plate – further emphasises the high, wide, proud stance of the new car.



◀ **Tail lights.** The generously proportioned tail lights taper sharply towards the centre line, creating visual drama.



◀ **Rear skid plate and bumper.** The tough nature of the Antara is further reinforced by the low placed, central skid plate. This perfectly complements the muscular aspect of the rear bumper.

## DRIVER FEATURES.

**Interior styling.** The high driving position and commanding view from the Antara are complemented by the design and layout of the fascia. The clarity of the instruments is matched by the ergonomic positioning of the major switchgear and controls. The elevated driving position is also enhanced by the six-way adjustable, supportively contoured driver's seat. All surfaces are softly sculpted, with flowing lines creating a cossetting environment for both the driver and front passenger.



🔍 **Instruments.** The instrument panel provides exceptional readability under all lighting conditions. Traditional white-on-black dials maintain the quality feel, while the high-mounted central information display is easily visible from both front seats. Three centrally mounted circular chrome-framed air vents supply additional ventilation.

🔍 **Quality audio.** Standard on E and S models, the CD 30 MP3 stereo radio/CD player not only plays MP3 tracks from a CD, but also direct from your own MP3 player via the auxiliary-in socket. Every Antara has seven speakers and steering wheel mounted audio controls. Antara SE features the DVD 100 stereo radio/CD with MP3 format and sat nav as standard.



### OTHER INTERIOR FEATURES INCLUDE:

- Electrically operated front and rear windows with driver's safety autoreverse and one-touch facility
- Electrically adjustable/heated door mirrors
- Fade up/fade down courtesy lights operated by front and rear door switches
- Front and rear map reading lights
- Driver's and front passenger's sunvisors with illuminated vanity mirrors
- Heat-reflective windscreen (S and SE models only)

🔍 **Gear knob.** The high quality impression created by Antara's interior is further enhanced by trim inserts and detailing to the steering wheel and gear knob (model featured is Antara SE with standard leather trim).



🔍 **Seating position.** You don't just sit high up in Antara. You relax in total comfort, thanks to driver's seat height, tilt and lumbar adjustment, plus a reach and rake adjustable steering column. S and SE models feature heated front seat cushions and backs – with three separate heat settings.

🔍 **Handbrake.** The uniquely styled handbrake and passenger grab handle reflect the high level of quality and underline Antara's sturdy SUV character.



🔍 **Cruise control.** Standard on Antara S and SE, the easy-to-use cruise control system allows you to maintain a steady speed without keeping your foot on the throttle. So it's more comfortable on long journeys and easier to keep to speed limits too.

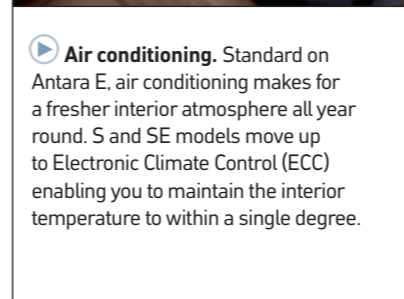


## INTERIOR FEATURES.

**Interior styling.** The “go-anywhere”, ready for anything character of Antara is fully matched by the interior. The roomy ambience and elegance is that of a premium class saloon, featuring high quality fabrics or leather and luxuriously detailed trim inserts.



◀ **Chrome-effect interior door handles.** Forming a stylish counterpoint with the door trim and driver’s door switchgear, the chrome-effect interior door handles add an unmistakably premium design accent.



▶ **Air conditioning.** Standard on Antara E, air conditioning makes for a fresher interior atmosphere all year round. S and SE models move up to Electronic Climate Control (ECC) enabling you to maintain the interior temperature to within a single degree.

▶ **SE model featured includes:** Leather upholstery, leather-covered steering wheel and gear knob, chrome-effect interior door handles, front centre armrest, illuminated vanity mirrors, heat-reflective windscreen, cruise control, and electronic climate control.

▶ **Centre rear passenger.** Centre rear seat passenger safety and comfort is catered for by a separate lap and diagonal inertia-reel seatbelt and height-adjustable head restraint.



▶ **Chrome-effect door sills.** The chrome-effect door sills provide an additional design cue, complementing the window trim and interior door handles. They also help protect the sills from unsightly scuffing.

### OTHER INTERIOR FEATURES INCLUDE:

- Air conditioning (Antara E models)
- Electronic climate control (Antara S and SE models)
- Front centre armrest with storage facility
- Rear centre armrest with storage facility

Flexibility is a key word with Vauxhall. That's why we've spent so much time and energy refining the internal packaging of the Antara. The overriding concern is attention to detail. The result is an ingenious array of storage, stowage and convenience features that are guaranteed to come in useful – whoever you have on board.

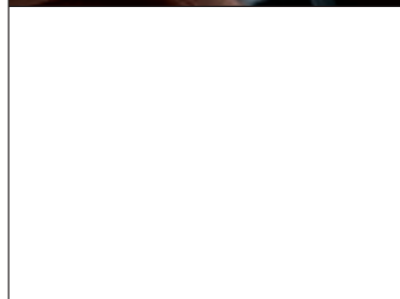


◀ **Airy passenger compartment.** Antara's light and spacious passenger compartment is a noticeable feature of the new car, particularly in the rear. The sense of airiness is enhanced by the rear quarterlight which allows plenty of light into the vehicle (offside seat shown in upright position).

▼ **Centre console stowage net.** A handy stowage net – located in the passenger footwell – provides convenient storage for all those items that might otherwise end up rolling around.



◀ **Storage compartment in front centre armrest.** An ideal place to put loose items like sweets, coins and other personal effects. The contents are hidden from prying eyes once the armrest lid is lowered.



◀ **Twin drinks holders in rear centre console.** The perfect place for rear passengers to place those en-route refreshments! Stores discreetly and conveniently when not in use.



▲ **Front passenger's underseat storage tray.** Ideal for depositing maps, guide books and other reference material usually taken along on long journeys.



#### OTHER INTERIOR FEATURES INCLUDE:

- Cooled and illuminated glovebox (S and SE models only)
- Twin drinks holders in front centre console
- Storage recess under light switch
- Roof-mounted sunglasses holder
- Large rear door pockets with drinks holders
- Storage compartment in rear centre armrest (S and SE models only)
- Front seat back nets
- Twin stowage compartments in luggage area
- Storage trays hidden beneath luggage compartment floor
- Car park ticket holder



Maximum flexibility inside – numerous possibilities outside. Antara is built to take you places, not just in style, but with serious practicality and plenty of space for five adults and all their kit. Clever use of luggage space – coupled with some equally smart loadspace storage innovations – ensure that the Antara luggage area is not only capacious, it's also hugely versatile.



◀ **Loading options.** Thanks to its long wheelbase, Antara has the ability to carry longer than average loads. With a maximum load floor length (rear seats folded) of 1.74m, Antara can easily accommodate a range of load and luggage sizes.



▲ **Roof rails.** Antara's stylish silver-effect integral roof rails don't just look good. They're the perfect starting point for the Vauxhall roof rack system. Attach the accessory base carrier and it's ready for a wide range of lockable travel boxes and other specialist fittings for skis and more.



▶ **Flex-Fix® – fully integrated carrier system\*.** Available from Autumn 2007, the revolutionary Flex-Fix® rear carrier system is integrated into the rear bumper and invisible from outside when not in use. It is released using a lever at the rear of the luggage compartment, then automatically extends several centimetres. It is then pulled out to its final position and automatically locks in place.

The rear lights are moved into position by a simple, side located, swivelling mechanism. The system incorporates an integrated carrier for two bikes, so you don't need a separate roof or rear carrier. The low loading height makes it extremely easy to use.

\*Customers will need to purchase an additional rear number plate.



▶ **FlexOrganiser® system.** This modular system consists of various transport and storage elements, offering maximum flexibility and versatility.

The basis of the FlexOrganiser® system are rails, prefitted as standard in the side walls of the luggage compartment (illustrated below).

To these can be attached a wide variety of accessories, including partitioning elements, storage boxes, nets, hooks and other components that can be purchased at extra cost and used to configure the load compartment to meet individual requirements.

FlexOrganiser® is the smart, versatile way to manage your load area.



#### KEY MEASUREMENTS:

##### Luggage space dimensions

- Floor length to rear seats: 912mm
- Floor length with rear seats folded: 1740mm
- Maximum width: 1320mm
- Width between wheel arches: 967mm

##### Luggage compartment volume

- Capacity under luggage compartment cover: 370 litres
- Capacity without luggage compartment cover: 420 litres
- With folded rear seats, capacity to roof: 1420 litres

##### Luggage compartment flexibility

- 60/40 split-folding rear seat
- Rear seat backrests fold forward
- Rear seats fold fully flat
- Extra flexibility due to adjustable rear seat backrests

##### 60/40 split-folding rear seats

All Antara models feature a 60/40 split-folding rear seat with adjustable backrest. Tilted forward into the upright position, these provide extra usable luggage capacity.

Bold, engaging looks and go-anywhere driving characteristics count for nothing if you can't sit back and enjoy the whole experience! Fortunately, Antara's cutting edge safety and security technology gives you all the peace of mind you need – wherever your journey takes you.



▶ **Airbag system.** Driver's, front passenger's and front seat side-impact airbags are standard on all Antara models. They work together with the pretensioned, height-adjustable seatbelts to provide exceptional front seat safety. Full-size curtain airbags offer additional protection for the front and outer rear seat passengers in the event of an impact.

▶ **Rain-sensitive wipers.** (S and SE models only) Activated by a sensor mounted in the rear-view mirror housing, rain-sensitive wipers switch on automatically when they sense rain on the screen and adjust their wiping speed to suit the prevailing conditions.



▶ **Front and rear parking distance sensors.** (SE models only) Sensors mounted in the vehicle bumpers provide an audible warning when an object is sensed behind – or in front of – the vehicle. The system can be switched off via a button in the centre console.



▶ **Smart seatbelt reminder.** The seatbelt reminder system of the Antara monitors whether the driver and front passenger are wearing seatbelts and if necessary issues a warning in the form of a flashing symbol on the fascia accompanied by an acoustic warning.



▶ **Automatic lighting control.** (S and SE models only) Turn the main lighting control to 'Auto' and Antara's headlights switch on automatically when you enter a tunnel or when darkness descends.



▶ **Tyre pressure monitoring system.** (SE models only) Permanently monitors the individual tyre pressures using sensors located on the inner sides of the tyre valves and displays the figures on a display on the instrument panel. If a loss of pressure is detected, the display flashes to warn you about the offending tyre.



▶ **Enhanced safety structure.** A key element in Antara's performance is its enhanced body structure with rigid passenger safety cell and front/rear deformation zones. This minimises the intrusion of mechanical components into the passenger compartment under all accident conditions. In the event of a frontal impact, the energy is distributed over three distinct load paths; in low speed collisions, special deformable cells at the front and a monoblock system at the rear of the frame absorb the crash energy, helping to reduce repair costs.



**ANTARA SAFETY AND SECURITY FEATURES INCLUDE:**

- Xenon headlights with dynamic beam levelling and high-pressure headlight washers (SE models only)
- High-level LED centre brake light (built into rear roof spoiler)
- Pedal release system
- Active-safety front seat head restraints
- Front and outer rear seatbelt force limiters
- Pyrotechnic front and outer rear body-lock seatbelt pretensioner system
- ISOFIX child seat restraint system for outer rear seats (does not include child seat)
- Electronic engine deadlock immobiliser
- Remote control ultrasonic security alarm system
- Remote control two-stage central deadlocking
- Door-to-door illumination
- Electro-chromatic anti-dazzle rear-view mirror (SE models only)
- Electrically foldable door mirrors with anti-dazzle on driver's side (SE models only)
- Electronic park/brake pedal safety interlock (models with automatic transmission)
- Retractable luggage compartment cover
- Folding key
- Freewheeling driver's door lock



## ON-THE-ROAD.

The chassis set-up of the Antara – with its MacPherson strut front and four-link rear suspension – is similar in concept to the latest Vectra and Signum models. It has been specifically adapted to combine agile, sporty handling alongside outstanding comfort and a high degree of active safety. Equally important is the long 2707mm wheelbase: this compensates for the uneven road surfaces so familiar to British drivers, while the wide track ensures dynamic cornering performance.

▶ **Sports suspension.** All Antara models are fitted with sports suspension as standard. Similar in concept to the system fitted to Vectra and Signum, the set-up – and, in particular, the choice of a 4-link rear axle over a more traditional beam axle – promotes outstanding roadholding combined with excellent ride comfort and enhanced active safety characteristics.



◀▶ **Chassis and steering.** Antara's MacPherson strut front suspension is mounted on a highly rigid subframe assembly, which guarantees precise wheel alignment and also compensates for lateral loads. Large capacity damping elements isolate the front axle and steering from the bodywork, absorbing and minimising vibration, road impact, and intrusion. The speed-sensitive power steering transmits good road feel and makes light work of parking and manoeuvring.

The compact four-link rear axle utilises three transverse and one longitudinal link to locate the rear wheels. This independent set-up makes it possible to achieve an optimal rear wheel camber. This, in turn, results in exceptionally high braking and cornering performance. An automatic self-levelling system, integrated into the shock absorbers, is standard on all Antaras fitted with the 2.0CDTi 16v diesel engine.



▶ **Electronic Stability Programme (ESP).** Every Antara benefits from a unique interaction between switchable ESP, Traction Control (TC) and Descent Control System (DCS), all working together with the intelligent four-wheel drive to deliver high degrees of driving satisfaction, comfort and active safety. If a wet roundabout or muddy corner catches you out, ESP applies corrective braking to help you regain control. TC helps you maintain grip under acceleration. While DCS enhances driver control on slippery slopes by maintaining a constant descent speed, preselected via the accelerator pedal (see page 23).

**Intelligent ABS.** The Antara Anti-lock Braking System (ABS) is supported by Emergency Brake Assist (EBA), Electronic Brakeforce Distribution (EBD) and Cornering Brake Control (CBC), making the car even easier to control and stop in emergency cornering and braking conditions.





## OFF-ROAD.

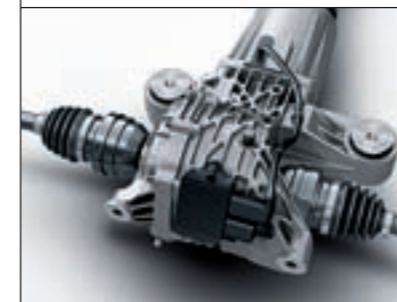
Antara is surprisingly capable off-road for a car with such outstanding on-road credentials. With its generous ground clearance (a full 200mm), intelligent, electronically controlled four-wheel drive system and standard Descent Control System (DCS), the car is clearly no slouch when it comes to venturing off the beaten track and exploring the real limits of the city. Even the car's wading depth is an impressive 450mm!



◀ **Intelligent four-wheel drive.**  
Antara is equipped with an electronically controlled four-wheel drivetrain. In normal driving conditions the power is delivered to the front wheels which maximises the vehicle's fuel economy. However, when needed, the transmission automatically engages all-wheel drive. In difficult conditions or on slippery ground, the drive is delivered on a 50:50 basis, front to rear, for optimal traction.

▼ **Descent Control System (DCS).**  
Unusually for the normal equipment levels in this market segment, Antara is fitted with an incline descent control as standard equipment. This allows drivers to make potentially tricky descents far more comfortably and at constant speed. Activating the Descent Control System (DCS) maintains a constant descent speed which is preselected via the accelerator pedal. The system is electronically monitored and activates the brakes – as necessary – to limit the speed of descent to that chosen by the driver.

▼ **Electronically controlled four-wheel drive coupling.** The heart of this intelligent four-wheel drive system is the electronically controlled hydraulic coupling to the rear axle. This senses the need for power transfer to the rear wheels and functions as a clutch to deliver exactly the right amount of torque. This takes place with split-second timing and is controlled by the fully integrated driving systems ABS, Traction Control, and ESP. Due to the split second, dynamic reaction of the coupling, the transfer to all-wheel drive takes place without any input from – and unbeknown to – the driver.



Antara's engines make an important contribution to the car's bold, confident character, delivering genuine driving excitement matched with competitive fuel economy and emissions. Two units are offered – a 2.4i 16v petrol and a 2.0CDTi 16v common rail turbo diesel unit – while transmission choice spans five-speed manual and automatic units.



⬆️ ⬇️ **5-speed manual or automatic transmission.** Both Antara engine choices come with a five-speed manual gearbox as standard. A five-speed automatic transmission is also available (at extra cost) on the 2.0CDTi diesel. This gives Antara an important advantage over many competitor diesel models which are only offered with manual transmission.



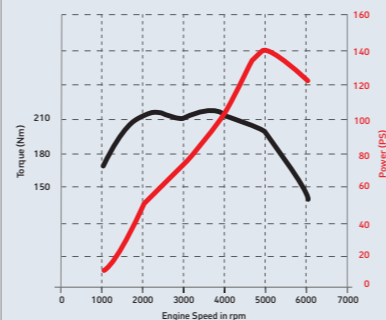
**2.4i 16v petrol.** The Antara E 140PS petrol engine is both responsive and responsible, combining generous reserves of power with high torque levels (220Nm max.) for effortless flexibility. This new Vauxhall engine has balancer shafts to ensure smooth power delivery. Fitted with a five-speed manual transmission as standard, service intervals are 20,000 miles or one year, whichever occurs first.

**2.4i 16v**

Maximum power: 140PS @ 5200rpm
Maximum torque: 220Nm @ 2400rpm
Maximum speed: 108mph
Acceleration (0-62mph): 11.9 seconds

**2.4i 16v ECOTEC**

Power and Torque.



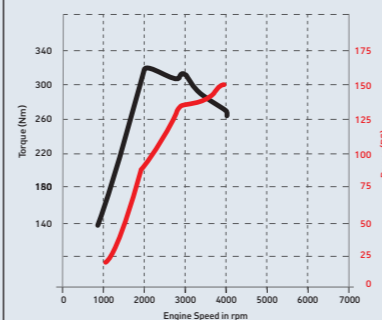
**2.0CDTi 16v diesel.** Delivering 150PS and 320Nm of low end torque, the Antara diesel unit features the latest common rail technology, combined with variable turbo geometry, for superior performance and economy. A maintenance-free diesel particulate filter reduces particle emissions by over 90%. Again, it's fitted with a five-speed manual transmission as standard. As with the petrol unit, service intervals are 20,000 miles/one year.

**2.0CDTi 16v**

Maximum power: 150PS @ 4000rpm
Maximum torque: 320Nm @ 2000rpm
Maximum speed: 111mph (manual) 110mph (auto)
Acceleration (0-62mph): 10.3 sec (manual) 12.1 sec (auto)

**2.0CDTi 16v ECOTEC**

Power and Torque.



		Fuel economy mpg (litres/100km)			
	Transmission	Urban driving	Extra-urban driving	Combined figure	CO <sub>2</sub> (g/km)
2.4i 16v	manual	21.2 (13.3)	38.7 (7.3)	29.4 (9.6)	229
2.0CDTi 16v	manual	31.7 (8.9)	41.5 (6.8)	37.7 (7.5)	198
2.0CDTi 16v	automatic	24.6 (11.5)	41.5 (6.8)	32.8 (8.6)	238

The fuel consumption figures shown comply with EC directive 1999/100 to provide a realistic indication of fuel consumption by taking into account everyday driving conditions, such as cold starts, acceleration and braking. These figures take account of the vehicles kerbweight, ascertained in accordance with the above regulation. **Important:** the results given relate to the particular car tested. Driving style, road and traffic conditions, vehicle mileage and standard of maintenance may also affect fuel consumption; therefore the results do not express or imply any guarantee of fuel consumption attainable.

**Service intervals**

Antara service intervals are 20,000 miles or one year, whichever comes first.



⬇️ **Diesel Particulate Filter (DPF).** Diesel Particulate Filters provide an effective means of reducing particulate emissions. Indeed, a maintenance-free Diesel Particulate Filter can cut the output of harmful emissions by over 90%. That's why it's standard equipment on the 2.0CDTi 16v diesel unit.



▲ CD 30 MP3 audio unit.



▲ Air conditioning.



**ANTARA E**

**Standard features include:**

- Intelligent four-wheel drive
- Switchable Electronic Stability Programme (ESP) with traction control
- Anti-lock Braking System (ABS)
- Descent Control System (DCS)
- Driver's and front passenger's airbags
- Front seat side-impact airbags
- Front and outer rear seat full-size curtain airbags
- Air conditioning
- Remote control ultrasonic security alarm system
- Remote control two-stage central deadlocking
- Door-to-door illumination
- Steering column adjustable for reach and rake
- Front fog lights
- Automatic self-levelling rear suspension (diesel models only)
- Retractable luggage compartment cover
- Silver-effect roof rails
- Electrically adjustable/heated door mirrors
- CD 30 stereo radio/CD with MP3 format and auxiliary-in socket
- Steering wheel mounted audio controls
- 17-inch alloy wheels with 235/60 R17 low profile tyres

**Engine availability and insurance groups (ABI)**

2.4i 16v manual	11E
2.0CDTi 16v manual	12E
2.0CDTi 16v automatic	12E



▲ Heated front seats.



▲ Electronic Climate Control (ECC).



**ANTARA S**

**Additional features over and above Antara E models:**

- Electronic Climate Control (ECC)
- Three-spoke leather-covered steering wheel
- Leather-covered gear knob
- Heated front seats
- Multi-function trip computer
- Cruise control
- Rear seat centre armrest
- Cooled glovebox
- 18-inch alloy wheels with 235/55 R 18 ultra-low profile tyres
- Chrome-effect exhaust tailpipe
- Automatic Lighting Control (ALC)
- Rain-sensitive windscreen wipers
- Heat-reflective windscreen
- Twin illuminated vanity mirrors
- Chrome-effect door handles

**Engine availability and insurance groups (ABI)**

2.0CDTi 16v manual	12E
2.0CDTi 16v automatic	12E



▲ Parking distance sensors.



▲ Xenon headlights.

*\*See Vauxhall Car and Accessory Price Guide for details of compatible mobile phones. Does not include phone or cradle.*



**ANTARA SE**

**Additional features over and above Antara S models:**

- DVD 100 stereo radio/six-disc CD autochanger with MP3 format/ auxiliary-in socket/satellite navigation with colour monitor
- Mobile phone system with Bluetooth®\*
- Xenon headlights with dynamic beam levelling and high-pressure headlight washers
- Electro-chromatic anti-dazzle rear-view mirror
- Electrically foldable door mirrors (anti-dazzle on driver's side)
- Leather seat and door facings
- Tyre pressure monitoring system
- Parking distance sensors front and rear

**Engine availability and insurance groups (ABI)**

2.0CDTi 16v manual	13E
2.0CDTi 16v automatic	13E





Developed in conjunction with auto design specialists Irmischer International, Antara styling accessories perfectly complement the vehicle's bold lines, as well as being manufactured to the same exacting standards as the car itself.



◀ **Treat your Antara to Irmischer Styling accessories which include:** body-colour front lower spoiler, cross hatch grille with aluminium upper and laser-etched 'Irmischer' logo, side running boards, stainless steel door handle covers, uprated and lowered spring kit, 20-inch Evo Star alloy wheels and body-colour rear roof spoiler.

▶ **Side running boards and stainless steel door handle covers.**

▶ **Body-colour front lower spoiler, and cross hatch grille with aluminium upper and laser-etched 'Irmischer' logo.**

▶ **20-inch Evo Star alloy wheels.**

▶ **Sports silencer with dual branched split oval design chrome-plated tailpipes.**

▶ **Body-colour rear roof spoiler.**

#### INTERIOR STYLING INCLUDES:

- Velour floor mats with heel protector and 'Irmischer' logo
- 'Irmischer' tax disc holder – anodized aluminium with twist-off back

#### EXTERIOR STYLING INCLUDES:

- Body-colour front lower spoiler
- Side running boards
- Body-colour rear roof spoiler
- Cross hatch grille with aluminium upper and laser-etched 'Irmischer' logo
- Cross hatch grille with 'Irmischer' badge
- Stainless steel door handle covers
- Door handle spoilers
- Uprated and lowered spring kit
- Sports silencer with dual branched split oval design chrome-plated tailpipes
- 20-inch Evo Star alloy wheels

Styling Pack – consisting of:

- 'Irmischer' tax disc holder – anodized aluminium with twist-off back
- Side running boards
- Body-colour rear roof spoiler
- Stainless steel door handle covers

*UK market Antaras will be fitted with roof rails as standard – not illustrated.*

At Vauxhall, we recognise that everyone is different. Indeed, we actively celebrate this diversity. It's what makes life interesting! Using our comprehensive line-up of accessories, our customers can create an Antara model that is totally in tune with their personal and professional needs. Whether they need to carry a bike or simply protect their carpets from muddy shoes, Vauxhall accessories are the right choice.



▶ **Base carrier.** The Vauxhall roof rack system begins with a base carrier, comprising two T-track roof bars which support a wide range of attachments.

▶ **Premium bicycle carrier.** With a moulded profile that holds the bicycle upright, leaving both hands free to secure it, this innovative carrier fits bikes with a frame tube of 20-80mm diameter. Two carriers may be fitted onto the base carrier, so remember to specify left or right hand fitting.



▶ **FlexOrganiser®.** The unique FlexOrganiser® system gives you maximum stowage flexibility and versatility. The fixation rails are fitted as standard in the side walls of the luggage compartment. Then just choose from the selection of partitioning and fixation elements to ideally configure the load compartment.



▶ **Rear seat protection cover.** Ideal for transporting animals or dirty objects on the rear seats. Easy to attach with Velcro at the rear seat headrests.



▶ **Velour and rubber floor mats.**

▶ **Towing mirrors.** Set of two mirrors improves rear view when towing wide trailers.



▶ **Mudflaps.**

#### ACCESSORIES INCLUDE:

##### Interior

- Rubber mats
- Velour mats
- Front passenger seat storage net
- Cargo liner
- Reversible anti-slip cargo liner
- FlexOrganiser®
- Security net for luggage compartment
- Rear seat protection cover
- Cool box
- Sunshade – tailgate and rear door windows

##### Exterior

- Mudflaps (front & rear)
- Door wind deflectors

##### Load carriers

- Base carrier – aluminium
- Premium bicycle carrier
- Side-loading bicycle carrier
- Tow bar mounted bicycle carrier
- Aluminium ski/snowboard carrier
- Surfboard/windsurf board carrier
- Roof boxes (various sizes)

##### Towing

- Detachable tow bar with 12N, 12N/12S or 13 Pin electrics
- Towing mirrors

##### Safety

- First aid kit
- Warning triangle
- Hi-visibility vest
- Temporary tyre repair kit
- Rear parking distance sensors
- Fire extinguisher (1kg)

##### Security

- Steering wheel security bar
- MetaSAT phone-activated security system

##### Child seats

- Vauxhall BABY SAFE
- Vauxhall DUO ISOFIX
- Vauxhall KID
- Baby mirror

##### Practical

- Supagard (paint and trim protection)
- Spare bulb kit
- Premium spare bulb kit
- Fuel can (5-litres)
- Stretch tow rope (2 tonne rated)
- Jump leads (16mm petrol, 25mm diesel)

##### Alloy wheel upgrade

- 18-inch alloy wheels (SE style)

##### Navigation

- TomTom ONE GB
- TomTom G0510
- TomTom G0710
- TomTom G0910

##### Communication

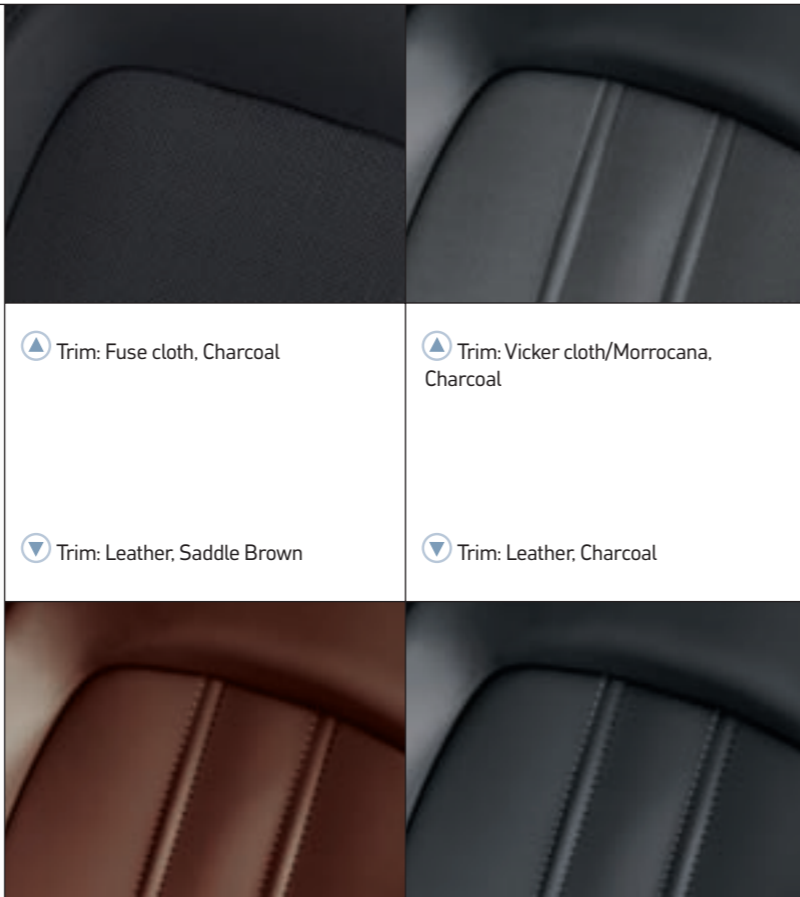
- Mobile phone-specific cradle adaptors

##### Audio

Please refer to the Siemens VDO and Blaupunkt audio brochures for full details.

Show your true colours. The Antara is available in a carefully selected range of exterior paint and interior finishes. All our colours and seat trims, including the premium leather upholstery, are designed to perfectly complement Antara's dynamic and stylish personality.

*Due to the limitations of the printing process the colours reproduced may vary slightly from the actual paint colour or trim material. As a result they should be used as a guide only.*



▲ Trim: Fuse cloth, Charcoal

▲ Trim: Vicker cloth/Morrocana, Charcoal

▼ Trim: Leather, Saddle Brown

▼ Trim: Leather, Charcoal

**Exterior colours**

**Model, trim name and trim colours**

	Antara E Fuse cloth	Antara S Vicker cloth/Morrocana	Antara SE Leather
<b>Standard</b>			
Pearl White	Charcoal	Charcoal	Charcoal or Saddle Brown
<b>Two-coat metallic (optional at extra cost)</b>			
Nickel Silver	Charcoal	Charcoal	Charcoal
Slate Blue	Charcoal	Charcoal	Charcoal
Tungsten	-	-	Saddle Brown
<b>Two-coat pearlescent (optional at extra cost)</b>			
Granite Black	Charcoal	Charcoal	Saddle Brown

*The exterior colours listed above are only available on those models where an interior trim is shown.*

▶ Pearl White



▶ Tungsten



▶ Nickel Silver



▶ Slate Blue



▶ Granite Black



## CHEVROLET CAPTIVA

Two cars. One shared platform. Two quite distinct characters. Both Antara and the new Chevrolet Captiva exert their own, highly individual appeal. For as the following comparison makes clear, the Vauxhall model and its sister vehicle exhibit two quite distinct characters, technically and even down to their potential audience...

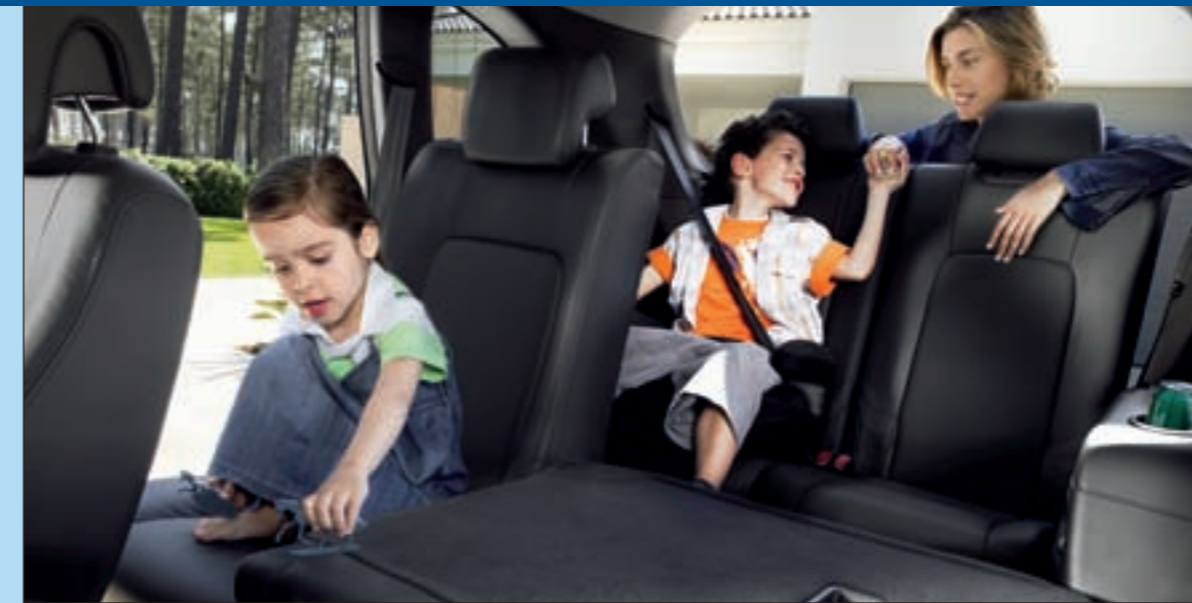


**Trim and Pricing Strategy.** Antara and Captiva appeal to two different markets, and this is reflected in the pricing structure adopted for the two models. The key Antara price points start at £19,955 for the E model, rising to £22,620 for the car in S guise and then £26,320 for the SE version. Captiva opens its account at £16,995 for the LS version rising to £19,995 for the LT and £23,740 for the LTX, though it's important to remember that the entry level Captiva models are front-wheel drive only.

**Target market.** The prime target market for Antara is easy to define: couples, predominantly in the 45+ age group, whose expressive, style-orientated nature demands a car that's in tune with their active, somewhat non-conformist lifestyle. Their key reasons for purchase will include the vehicle's styling and driving dynamics. Captiva's target market, on the other hand, are more likely to be aged 35-44, family-oriented, and very conscious of issues like price and value – key tenets of the Chevrolet brand.

Their key reasons for purchase will include practicality, the versatility offered by a full seven seats, and the car's natural good looks.

**Size.** With dimensions of 4575mm (length) x 2085mm (width) x 1747mm (height), Antara fits quite comfortably into the medium SUV sub-segment we identified earlier. Longer and taller at 4635mm x 1755mm, the Chevrolet Captiva occupies a different footprint and offers special appeal to customers who are looking for a more family-oriented SUV.



**Exterior.** Externally, a major package of differentiating features separate the Vauxhall offering from its relative. Premium exterior design detailing begins the process, including distinctively styled front bumpers and a bespoke headlight design. Antara also features the availability of xenon headlights (complete with headlight washer system) along with silver-painted roof rails (Captivas feature charcoal finish roof rails). The Captiva also features a glass flip tailgate.

The wheel designs, too, are specific to Antara (with sizes of 17 inches upwards, compared to 16 inches upwards for the Chevrolet contender). Uniquely, Antara can also be specified with Vauxhall's revolutionary Flex-Fix® rear carrier system, integrated into the rear bumper.

From a technical perspective, Antara comes with intelligent four-wheel drive as standard on all models. The Chevrolet LS model is front-wheel drive only, as befits its more affordable price, with On Demand All Wheel Drive available on the LT and LTX.

Antara also boasts speed-sensitive steering and a specific sports chassis set-up which results in impressive roadholding, in conjunction with a high degree of ride comfort and enhanced active safety characteristics.



**Interior.** The differences between the two models extend, quite noticeably, to the interior. As you might expect, the Vauxhall model employs high quality interior trim with premium finishes and plenty of the design cues that distinguish the Vauxhall brand. In particular, Antara features a unique instrument panel, steering wheels and trim materials.

Switches and controls are also unique. And the audio, communications and navigation equipment derives, quite naturally, from Vauxhall's celebrated in-car range – including the standard colour DVD satellite navigation on the SE model which includes mapping for 21 countries. Perhaps the most notable difference lies in the seating configuration: whereas the Chevrolet vehicle is available in a choice of both five- and seven-seat models, Antara is first and foremost a five-seater!

## TOYOTA RAV4

As the third generation version of a car which did more than most to popularise the 'soft roader' breed when it first launched back in 1994, the five-door only RAV4 still ranks among the most popular cars in its class – and is Antara's strongest competitor.



“needed a lengthy 55.6m to stop the car from 70mph. Worse still was the car’s tendency to wander under hard braking”

*Autocar 22 March 2006*

Launched here in February 2006, the Japanese contender has been largely praised for its ride, handling – and, in particular – its safety features, though *Autocar* felt that its interior materials were no match for premium competitors (“75% of buyers will come from cars other than 4x4s”) and *What Car?* complained that the “thick A-pillars obstruct vision around tighter corners”.

Bigger, roomier and more powerful than previous versions, RAV4 Mark Three is also a fair bit more expensive – the 177PS diesel-powered T180 proving particularly costly, weighing in at a staggering £27,020, though you can secure a base XT3 2.0 VVT-i model for £19,055.

Featuring what the company refer to as Active Torque Control 4WD (which switches automatically between two-wheel and four-wheel drive), engine choice comprises a 152PS 2.0 litre petrol unit, or one of two 2.2 litre diesels (producing either 136 or 177PS) with automatic transmission available with the petrol unit, though “the engine itself is disappointingly slow” (*What Car?*) “and you need to rev it hard”. It’s noisy, too. The same magazine also felt that “the side-hinged tailgate is awkward and some of the cabin plastics aren’t great”.

Feature comparison	Antara SE	Toyota RAV4 XT5 D-4D
On-the-road price	£26,320	£25,820
<b>Mechanical</b>		
Intelligent 4WD	•	•
Differential lock		•
Automatic option	£1,475	No
Self-levelling rear suspension	•	
<b>Safety</b>		
Driver's knee airbag		•
Descent Control System (DCS)	•	Auto only
<b>Security</b>		
Smart entry/start		•
<b>Interior</b>		
Electrically adjustable driver's seat		•
Electronic climate control	•	

	Antara SE	Toyota RAV4 XT5 D-4D
<b>Audio/Communications</b>		
Auxiliary-in socket	•	
Steering wheel controls	•	
CD autochanger	•	
Bluetooth capability	•	•
<b>Exterior</b>		
Alloy wheels	18-inch	17-inch
Xenon headlights	•	
Electric sunroof		•
Roof rails	•	
Parking distance sensors (Front/Rear)	F/R	
<b>Luggage capacity (litres)</b>		
With rear seats folded	1420	N/A
Behind rear seats	420	586

Engine/Performance/Economy comparison					
	Antara		Toyota RAV4		
<b>Engine</b>					
Engine	2.4i 16v	2.0CDTi 16v	2.0 VVT-i	D-4D 140	D-4D 180
Fuel type	Petrol	Diesel	Petrol	Diesel	Diesel
Capacity	2405	1991	1998	2231	2231
Maximum power	140PS @ 5200rpm	150PS @ 4000rpm	152PS @ 6000rpm	136PS @ 3600rpm	177PS @ 3600rpm
Maximum torque	220Nm @ 2400rpm	320Nm @ 2000rpm	194Nm @ 4000rpm	310Nm @ 2000-2800rpm	400Nm @ 2000-2600rpm
<b>Performance (manufacturer's figures)</b>					
0-62mph (secs)	11.9	10.3	10.6	10.5	9.3
Maximum speed (mph)	108	111	115	112	124
<b>Fuel economy/emissions</b>					
Combined figure (mpg)	29.4	37.7	32.8	42.8	40.4
CO <sub>2</sub> emissions (g/km)	229	198	202	173	185

OTR price comparison	
<b>Vauxhall Antara*</b>	
E 2.4i 16v	£19,955
E 2.0CDTi 16v	£21,020
S 2.0CDTi 16v	£22,620
SE 2.0CDTi 16v	£26,320
<b>Toyota RAV4**</b>	
XT3 2.0 VVT-i	£19,055
XT3 2.2 D-4D	£20,320
XT4 2.0 VVT-i	£21,555
XT4 2.2 D-4D	£22,820
XT5 2.0 VVT-i	£24,555
XT5 2.2 D-4D	£25,820
T180 2.2 D-4D	£27,020

\* = for automatic transmission add £1475 – diesel models only.

\*\* = for automatic transmission add £1000 (XT3), £1100 (XT4, XT5) – petrol models only.

## HONDA CR-V

Built at the Honda UK manufacturing plant in Swindon, this, the third generation of Honda's archetypal 'soft-roader', is Antara's other main competitor and launched into the UK market as recently as January this year.



"It's torquey enough, but horrendously noisy and beset by a piercing turbo whine. The steering is disconcertingly slow too"

Top Gear website  
29 November 2006

Yet right from the beginning, doubts were raised about the new car. As *Autocar* put it in an early test review, "it doesn't even look much like a 4x4". Similar in size to more 'authentic' 4x4 fare like the Land Rover Freelander, the CR-V has its feet planted very firmly in 'on-road' 4x4 territory; like Antara, it employs a part time four-wheel drive system which feeds traction to both axles when any degree of slip is detected.

Generally well-regarded for its equipment levels, build quality and all-round comfort – and its particularly low depreciation – the volume seller is the 2.2 i-CDTi diesel, though if *Top Gear's* comments are anything to go by, here's one Honda power unit that doesn't raise the bar technology-wise! To quote the magazine: "It's torquey enough, but horrendously noisy and beset by a piercing turbo whine. The steering is disconcertingly slow too".

Also on the debit side, *What Car?* felt that "the thick rear pillars hinder the rear view a little" and the boot is "not the biggest in its class". *The Observer* put the whole thing into perspective: "on the one hand it's a slightly toothless 4x4, on the other a lumpen saloon".

Feature comparison	Antara E 2.0CDTi	Honda CR-V ES 2.2D
On-the-road price	£21,020	£21,405
<b>Mechanical</b>		
Intelligent 4WD	•	•
Automatic option	£1,475	No
Self-levelling rear suspension	•	
<b>Safety</b>		
Descent Control System (DCS)	•	
<b>Security</b>		
Deadlocking	•	
<b>Interior</b>		
Leather-covered steering wheel		•
Cruise control		•
Air conditioning	•	
Electronic climate control		•

	Antara E 2.0CDTi	Honda CR-V ES 2.2D
<b>Audio</b>		
CD player		•
CD player with MP3 format	•	
<b>Exterior</b>		
Alloy wheels	17-inch	17-inch
Roof rails	•	
Parking distance sensors (Front/Rear)		F/R
<b>Luggage capacity (litres)</b>		
With rear seats folded	1420	955*
Behind rear seats	420	556

\* = to glass line

Engine/Performance/Economy comparison				
	Antara		Honda CR-V	
<b>Engine</b>				
Engine	2.4i 16v	2.0CDTi 16v	2.0 i-VTEC	2.2 i-CDTi
Fuel type	Petrol	Diesel	Petrol	Diesel
Capacity	2405	1991	1997	2204
Maximum power	140PS @ 5200rpm	150PS @ 4000rpm	150PS @ 6200rpm	140PS @ 4000rpm
Maximum torque	220Nm @ 2400rpm	320Nm @ 2000rpm	192Nm @ 4200rpm	340Nm @ 2000rpm
<b>Performance (manufacturer's figures)</b>				
0-62mph (secs)	11.9	10.3	10.2	10.3
Maximum speed (mph)	108	111	118	116
<b>Fuel economy/emissions</b>				
Combined figure (mpg)	29.4	37.7	34.9	43.5
CO <sub>2</sub> emissions (g/km)	229	198	192	173

OTR price comparison	
Vauxhall Antara**	
E 2.4i 16v	£19,955
E 2.0CDTi 16v	£21,020
S 2.0CDTi 16v	£22,620
SE 2.0CDTi 16v	£26,320
Honda CR-V†	
S 2.0	£18,715
SE 2.0	£18,815
S 2.2 i-CDTi	£19,905
SE 2.2 i-CDTi	£20,005
ES 2.0	£20,215
ES 2.2 i-CDTi	£21,405
EX 2.0	£23,515
EX 2.2 i-CDTi	£24,705

\*\* = for automatic transmission add £1475 – diesel models only.

† = for automatic transmission add £1100 – petrol models only.

## KIA SORENTO

When a magazine like *Top Gear* accuses you of coming “with almost as much bulls\*\*\* as a Spanish car” and castigates your manufacturer for sounding like “a hybrid fruit juice, only available at the cinema” you know you’re on a hiding to nothing!



“although the dash’s finish is acceptable, the ergonomics remain a little odd and cheap-feeling. Other bad points? The ride is both choppy and wallowy... and the [2.5 CRDi] engine is noisy, too”

*Autocar website  
6 September 2006*

Yet the fact remains that Kia’s Sorento line-up – originally launched in 2002 but subject to a fairly major makeover halfway through 2006 – continues to attract buyers, despite “a big question mark by the car’s residual values” (*What Car?*).

Available with part-time (XE models) or permanent four-wheel drive (XS/XT versions), the revised range features a 168PS 2.5 litre turbo diesel which boasts a little more oomph than the unit it replaces.

An off-roader first and foremost – hence the separate chassis and beefed up suspension – Sorento doesn’t really cut it on the tarmac: as *Top Gear*, again, were quick to point out: “within a few minutes of driving it becomes clear that the Sorento is not really an SUV”.

The final word must go to *Autocar*, who cast scorn on the mid-life refresh: “although the dash’s finish is acceptable, the ergonomics remain a little odd and cheap-feeling. Other bad points? The ride is both choppy and wallowy... and the [2.5 CRDi] engine is noisy, too”.

Feature comparison	Antara S	Kia Sorento XS
On-the-road price	£22,620	£22,995
<b>Mechanical</b>		
4WD		•
Intelligent 4WD	•	
Low ratio facility		•
Automatic option	£1,475	£1,100
Self-levelling rear suspension	•	
<b>Safety</b>		
Side-impact airbags	•	
Electronic Stability Programme (ESP)	•	
Descent Control System (DCS)	•	
<b>Security</b>		
Deadlocking	•	
Remote control alarm	•	

	Antara S	Kia Sorento XS
<b>Interior</b>		
Cloth/part leather-effect seats	•	
Leather seat facings		•
Adjustable steering wheel (Reach/Rake)	Both	Reach
<b>Audio</b>		
Auxiliary-in socket	•	
Steering wheel mounted controls	•	
<b>Exterior</b>		
Alloy wheels	18-inch	16-inch
Rain-sensitive windscreen wipers	•	
<b>Luggage capacity (litres)</b>		
With rear seats folded	1420	1960
Behind rear seats	420	900

Engine/Performance/Economy comparison			
	Antara		Kia Sorento
<b>Engine</b>			
Engine	2.4i 16v	2.0CDTi 16v	2.5 CRDi
Fuel type	Petrol	Diesel	Diesel
Capacity	2405	1991	2497
Maximum power	140PS @ 5200rpm	150PS @ 4000rpm	168PS @ 3800rpm
Maximum torque	220Nm @ 2400rpm	320Nm @ 2000rpm	392Nm @ 2000rpm
<b>Performance (manufacturer’s figures)</b>			
0-62mph (secs)	11.9	10.3	11.6 (0-60)
Maximum speed (mph)	108	111	113
<b>Fuel economy/emissions</b>			
Combined figure (mpg)	29.4	37.7	35.8
CO <sub>2</sub> emissions (g/km)	229	198	209

OTR price comparison	
<b>Vauxhall Antara*</b>	
E 2.4i 16v	£19,955
E 2.0CDTi 16v	£21,020
S 2.0CDTi 16v	£22,620
SE 2.0CDTi 16v	£26,320
<b>Kia Sorento**</b>	
XE 2.5 CRDi	£19,995
XS 2.5 CRDi	£22,995
XT 2.5 CRDi	£24,995

\* = for automatic transmission add £1475 – diesel models only.

\*\* = for automatic transmission add £1100.

## HYUNDAI SANTA FE

Voted Best 4x4 Recreational Vehicle in the *Auto Express* New Car Honours 2006, the second generation of the Korean manufacturer's mid-sized SUV arrived here last year with an ambitious remit to move the model upmarket into territory typically occupied by premium European SUV contenders like the Volkswagen Touareg and BMW X5. It's a big ask.



"your enjoyment of a long journey is compromised by the near-constant fidgeting of the suspension"

*Autocar* 31 May 2006

Bigger, roomier and somewhat more expensive than the model it replaces, Santa Fe Take Two is available in a choice of five- or seven-seat variants, with power provided by either a 2.2 CRTD diesel unit with Variable Geometry Turbocharger technology or a 2.7 V6 petrol engine featuring Constantly Variable Valve Technology. The car is fitted with a part-time 4WD system (dubbed 'torque-on-demand' by its manufacturer) which employs a series of sensors to monitor road and driving conditions, automatically engaging 4WD whenever greater traction is required.

The engines themselves are a mixed bunch. The 2.2 litre diesel has been widely praised for its smoothness and refinement (*What Car?* described it as "a gem") although as *Autocar* were quick to point out, "an unacceptable amount of wind noise creeps in above 60mph". On the other hand, the "unresponsive and thrashy-sounding 2.7 litre V6 petrol is best avoided" (*Autocar*).

Elsewhere, reaction has been generally positive (a key selling point is its unique five-year warranty package), though "servicing and fuel bills are expensive" (*Auto Express*) and "the steering is overly light and inconsistently weighted" (*Autocar*).

Feature comparison	Antara E 2.0CDTi	Santa Fe GSI 2.2 CRTD
On-the-road price	£21,020	£21,605
<b>Mechanical</b>		
Intelligent 4WD	•	•
Differential lock		•
Automatic option	£1,475	£1,000
Self-levelling rear suspension	•	• (7-seat)
<b>Safety</b>		
Electronic Stability Programme (ESP)	•	
Descent Control System (DCS)	•	
<b>Security</b>		
Remote control alarm system	•	•

	Antara E 2.0CDTi	Santa Fe GSI 2.2 CRTD
<b>Audio</b>		
Cassette player		•
CD player with MP3 format	•	•
Auxiliary-in socket	•	
Steering wheel mounted controls	•	
<b>Exterior</b>		
Alloy wheels	17-inch	17-inch
Front fog lights	•	
Roof rails	•	•
<b>Luggage capacity (litres)</b>		
With rear seats folded	1420	2213
Behind rear seats	420	969

Engine/Performance/Economy comparison				
	Antara		Hyundai Santa Fe	
<b>Engine</b>				
Engine	2.4i 16v	2.0CDTi 16v	2.2 CRTD	2.7 V6
Fuel type	Petrol	Diesel	Diesel	Petrol
Capacity	2405	1991	2188	2656
Maximum power	140PS @ 5200rpm	150PS @ 4000rpm	150PS @ 4000rpm	189PS @ 6000rpm
Maximum torque	220Nm @ 2400rpm	320Nm @ 2000rpm	335Nm @ 1800-2500rpm	248Nm @ 4000rpm
<b>Performance (manufacturer's figures)</b>				
0-62mph (secs)	11.9	10.3	11.6	11.7
Maximum speed (mph)	108	111	111	109
<b>Fuel economy/emissions</b>				
Combined figure (mpg)	29.4	37.7	38.7	26.6
CO <sub>2</sub> emissions (g/km)	229	198	191	252

OTR price comparison	
<b>Vauxhall Antara*</b>	
E 2.4i 16v	£19,955
E 2.0CDTi 16v	£21,020
S 2.0CDTi 16v	£22,620
SE 2.0CDTi 16v	£26,320
<b>Hyundai Santa Fe**</b>	
GSI 2.2 CRTD	£21,605
CDX 2.2 CRTD	£23,430
CDX 2.7 V6	£23,840
CDX+ 2.2 CRTD	£24,630
CDX+ 2.7 V6	£25,040

\* = for automatic transmission add £1475 - diesel models only.

\*\* = for automatic transmission add £1000 - diesel models only. Standard on petrol models. Add £1000 for seven-seat option.





Front, side-impact and curtain airbags.



Tyre Pressure Monitoring System (TPMS).



Steering column adjustable for reach and rake.

## Safety

**Standard features:** • Driver's airbag • Front passenger's airbag • Front seat side-impact airbags • Full-size curtain airbags • Energy-absorbing steering column • Pedal release system – Reduces potential injury to the driver's legs and feet during a severe frontal impact • Laminated windscreen • Side-impact protection beams • Integral protective side door padding • Reinforced passenger safety cell • Deformation zones front and rear • Burst-proof door locks and anti-jam door design • Child-proof locks on rear doors

• ISOFIX child seat restraint system for outer rear seats (does not include child seat) – Secures ISOFIX child safety seats to the vehicle itself, virtually eliminating the dangers that can result from improper installation

• Switchable Electronic Stability Programme (ESP) with traction control – see **D1** on page 55 • Anti-lock Braking System (ABS) • Electronic Brakeforce Distribution (EBD) – Distributes the braking force between the wheels most able to use it, allowing stable and efficient braking • Cornering Brake Control (CBC) – see **D2** on page 55 • Emergency Brake Assist (EBA) – Increases applied brake force in emergency braking situations • Descent Control System (DCS) • Adaptive Brake Lights (ABL) – If the driver brakes hard enough to activate the ABS the brake lights flash on and off at the rate of four times per second, thus warning following vehicles that heavy braking is in progress

• Active-safety front seat head restraints • Height-adjustable front and rear seat head restraints • Pyrotechnic front and outer rear body-lock seatbelt pretensioner system – Tightens the seatbelt during the early stages of a frontal impact • Front and outer rear seatbelt force limiters – Reduce potential upper body injuries during a frontal impact • Anti-submarining ramps in all seats – Help prevent occupants sliding underneath the lap belt during a collision

Additional features	E	S	SE
Tyre Pressure Monitoring System (TPMS)			●
Electronic park/brake pedal safety interlock on models with automatic transmission	●	●	●

## Security

**Standard features** • Remote control ultrasonic security alarm system • Remote control two-stage central deadlocking (doors, tailgate, fuel filler flap) • Visible Vehicle Identification Number (VIN) plate • 'Key left in ignition' audible warning • Electronic engine deadlock immobiliser • Electronic theft protection for audio equipment • Driver's internal central locking switch • Freewheeling driver's door lock • Door-to-door illumination – Keeps the headlights and rear lights on for 30 seconds after the car doors are locked • Retractable luggage area cover • Folding key • Locking wheel nuts

## Facia, instruments and controls

**Standard features** • Multi-function display showing time, date, audio information and outside air temperature (with ice warning function) • Rev counter • Digital clock with automatic RDS time adjustment • Black instruments with chrome edging • Steering column adjustable for reach and rake • Electronic odometer and trip odometer • Instrument panel light dimmer • Handbrake-on/low brake fluid level and low fuel level warning lights • Service interval monitor • Cigar lighter and front ashtray

Additional features	E	S	SE
Three-spoke steering wheel	●		
Leather-covered three-spoke steering wheel and gear knob		●	●
Multi-function trip computer		●	
Multi-function trip computer incorporating colour monitor			●
Cruise control		●	●

## Interior features

**Standard features** • Driver's seat with reach, rake, height and lumbar adjustment • Lidded glovebox • Charcoal metallic-effect centre console • 12-volt auxiliary power socket within centre console • Front centre armrest with storage facility • Chrome-effect interior door handles • Colour-keyed fleece velour carpet • Front door pockets • Front passenger's underseat storage tray • Map pockets on front seat backs • Drinks holders in rear centre console • FlexOrganiser® rails in sides of luggage area • Fully carpeted and illuminated luggage area • Front map reading lights integral with courtesy light • Rear reading lights • Driver's sunglasses holder • Fade up/fade down courtesy lighting operated by door switches • 60/40 split-folding rear seat back • Adjustable rear seat backrest

Additional features	E	S	SE
Twin sunvisors incorporating front passenger's vanity mirror with cover	●		
Twin sunvisors incorporating illuminated driver's and front passenger's vanity mirrors with covers		●	●
Drinks holders in front centre console	●	●	
Electro-chromatic anti-dazzle rear-view mirror			●
Leather seat facings and door trim insert panels			●
Electrically heated front seats with variable temperature settings		●	●
Rear seat centre armrest with storage compartment		●	●
'Aquagracic Oxygen' inserts on facia and doors	●		
'Aquagracic Quest' inserts on facia and doors		●	
'Aquagracic Wood' inserts on facia and doors			●

## Heating and ventilation

**Standard features** • Interior pollen filter • Air recirculation with activation light • Air blend heater with four-speed fan

Additional features	E	S	SE
Air conditioning	●		
Electronic Climate Control (ECC) incorporating cooled glovebox		●	●



Front centre armrest with storage facility.



Drinks holders in rear centre console.



17-inch alloy wheel, standard on Antara E models.



18-inch alloy wheel, standard on Antara S and SE models.



Xenon headlights with high-pressure washers.

## Wheels and tyres

Features	E	S	SE
17-inch five-spoke alloy wheels with 235/60 R 17 low profile tyres	●		
18-inch five-spoke alloy wheels with 235/55 R 18 ultra-low profile tyres		●	●
Steel space-saver spare wheel/tyre	●	●	●

## Mechanical features

Features	E	S	SE
Intelligent four-wheel drive	●	●	●
Automatic self-levelling rear suspension (2.0CDTi 16v only)	●	●	●
Diesel particulate filter (2.0CDTi 16v only)	●	●	●
Five-speed manual gearbox	●	●	●
Five-speed automatic transmission (2.0CDTi 16v only)	○	○	○

## Exterior features

Standard features	E	S	SE
● Heated rear window with automatic timed cut-off			
● Intermittent rear window wash/wipe			
● Tinted glass			
● Electrically operated front and rear windows with driver's safety autoreverse and one-touch facility			
● Body-colour door mirrors			
● Electrically adjustable/heated door mirrors (wide-angle on driver's side) with automatic timed cut-off			
● Chrome-effect window trim			
● Silver-effect roof rails			
● Front and rear alloy-effect protective skid plates			
● Alloy-effect door sill covers			
● Two-tone horn			
● Front fog lights			
● Lights-on audible warning			
● Twin gas-assisted tailgate struts			

Additional features	E	S	SE
Body-colour door handles	●		
Chrome-effect door handles		●	●
Electrically foldable door mirrors (anti-dazzle on driver's side)			●
Heat-reflective windscreen		●	●
Rain-sensitive windscreen wipers		●	●
Automatic Lighting Control (ALC)		●	●
Chrome-effect exhaust tailpipe		●	●
Dual Ellipsoidal headlights	●	●	
Xenon headlights with dynamic beam levelling and high-pressure headlight washers			●
Front and rear parking distance sensors			●
Two-coat metallic or pearlescent paint	○	○	○

## Audio, communications and navigation

Features	E	S	SE
<b>CD 30 MP3 stereo radio/CD with MP3 format</b>			
● AM/FM stereo radio with 24 station presets	●	●	
● RDS with Traffic Programme			
● CD with MP3 format			
● Remote display			
● 20 watts per channel output			
● 7 speakers			
<b>DVD 100 stereo radio/CD with MP3 format/satellite navigation</b>			
● Satellite navigation system			●
● AM/FM stereo radio with 40 station presets			
● RDS with Traffic Programme			
● Six-disc CD autochanger with MP3 format			
● Remote colour monitor			
● 20 watts per channel output			
● 7 speakers			
Auxiliary-in socket for portable music player	●	●	●
Steering wheel mounted audio controls	●	●	●
Mobile phone system with Bluetooth® (does not include phone or cradle)			●

### Satellite navigation

The DVD 100 satellite navigation system uses the international network of GPS (Global Positioning System) satellites, linked to a comprehensive DVD-ROM mapping system, to determine your precise location and guide you to your chosen destination virtually anywhere in mainland Britain and a further 20 European countries.

Entering your destination has never been easier, so you can start your journey quickly and without fuss, and it's just as simple to use when on the move. The colour monitor has a split-screen facility, which displays half the screen as a route map while the other half shows directional arrows to give immediate information about road junctions and, if that was not enough, there are audible direction prompts to give details about road numbers and motorway junction numbers too. You can even plan your route to avoid toll roads.

DVD 100 includes a comprehensive travel guide that allows you to browse details of restaurants, hotels and other points of interest. These details can include information such as pictures, addresses and telephone numbers. Selecting your desired destination enters it straight into the navigation system.

The DVD 100 also features Traffic Message Channel (TMC), a specific application of RDS used for broadcasting real-time traffic information, delivered to the driver either visually or verbally. TMC can also offer dynamic route guidance – alerting the driver to a problem on the planned route and calculating an alternative route to avoid the incident.

### Mobile phone system with Bluetooth®

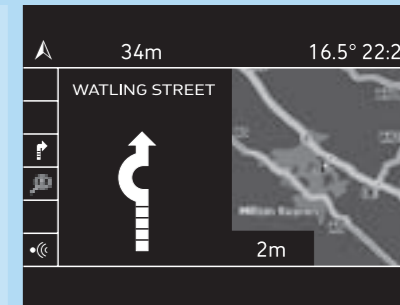
Vauxhall's factory-fit dual-band mobile phone system is fully integrated into the audio and communication system. It features voice control and will connect wirelessly to phones with Bluetooth® technology.

All the required information is displayed on the colour monitor when a mobile phone is in use, while the menus are easily navigated by either the steering wheel audio controls or the multi-function button on the radio. Certain functions can also be controlled by voice activation.

Mounted on the centre console, the phone system base unit can be fitted with a cradle (available as an accessory) for many different mobile phones. A list of available cradles is featured in the Vauxhall Car and Accessory Price Guide.

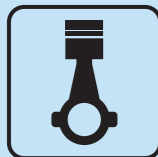


Steering wheel mounted audio controls.



DVD 100 satellite navigation system, showing the split-screen facility.

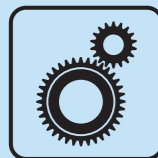
● = Standard equipment.  
○ = Optional at extra cost.



**320Nm**  
Torquey diesel is superbly flexible



**41.5mpg**  
Turbo diesel engine can exceed 40 miles per gallon



**Transmission**  
Five-speed manual and automatic versions available

## Engines

	2.4i 16v ECOTEC-4 Petrol	2.0CDTi 16v ECOTEC-4 Turbo diesel with Diesel Particulate Filter (DPF)
Capacity	2405cc	1991cc
Maximum power	140PS (103kW) @ 5200rpm	150PS (110kW) @ 4000rpm
Maximum torque	220Nm (162 lb.ft.) @ 2400rpm	320Nm (236 lb.ft.) @ 2000rpm
Configuration	4 cylinders, 4 valves per cylinder, double overhead camshafts	4 cylinders, 4 valves per cylinder, single overhead camshaft
Fuel/induction system	Naturally aspirated. Multi-point sequential fuel injection	Variable geometry turbocharger with intercooler. Common rail fuel injection
Service intervals	20,000 miles or 1 year (whichever occurs sooner)	
<b>Benefit in kind company car taxation – 2007/08 tax year</b>		
Manual	32%	29%
Automatic	-	35%

## Performance, fuel economy and emissions

	Performance (manufacturer's figures)		Fuel economy mpg (litres/100km)			CO <sub>2</sub> emissions (g/km)
	Maximum speed (mph)	Acceleration 0-62mph (secs)	Urban driving	Extra-urban driving	Combined figure	
2.4i 16v	108	11.9	21.2 (13.3)	38.7 (7.3)	29.4 (9.6)	229
2.0CDTi 16v	111	10.3	31.7 (8.9)	41.5 (6.8)	37.7 (7.5)	198
2.0CDTi 16v automatic	110	12.1	24.6 (11.5)	41.5 (6.8)	32.8 (8.6)	238

The fuel consumption figures shown comply with EC directive 1999/100 to provide a realistic indication of fuel consumption by taking into account everyday driving conditions, such as cold starts, acceleration, braking and even differences in the weight of models with the same engine. **Important:** the results given relate to the particular car tested; inevitably there are differences between individual cars of the same model. In addition, some cars may incorporate particular modifications. Driving style, road and traffic conditions, vehicle mileage and standard of maintenance may also affect fuel consumption; therefore the results do not express or imply any guarantee of the fuel consumption attainable.

## Vauxhall Assistance and warranties\*

- A one-year unlimited mileage manufacturer's warranty
- Second and third year no-fee customer option warranty up to 60,000 miles (from first registration)
- Vauxhall Assistance for 12 months from first registration
- Six years' body panel anti-perforation warranty

\* = Warranty is only available on vehicles sourced from Vauxhall Motors Ltd. Terms and conditions apply - please see your Vauxhall retailer for details.

## Optional transmission

### Five-speed automatic transmission with Active Select function:

Available at extra cost on 2.0CDTi 16v models. Electronically controlled with adaptive driving function and winter mode. Fluid drive with torque converter, lock-up clutch, neutral control fuel-saving feature and Active Select.

## Steering

- Speed-sensitive power-assisted steering
- Turning circle (kerb-to-kerb): 12.4m (40.7ft)

## Suspension

**Front:** Independent. Lightweight MacPherson struts with gas-pressure dampers and coil springs. Anti-roll bar.  
**Rear:** Independent. Multi-link with coil springs and gas-pressure dampers. 2.0CDTi 16v models feature automatic self-levelling rear suspension. This system is integrated within the dampers and requires no external power source.

## Brakes

- Anti-lock Braking System (ABS)
- Dual circuit, diagonally split braking system

### All models

Front ventilated discs: 296mm diameter  
Rear ventilated discs: 303mm diameter

## Body

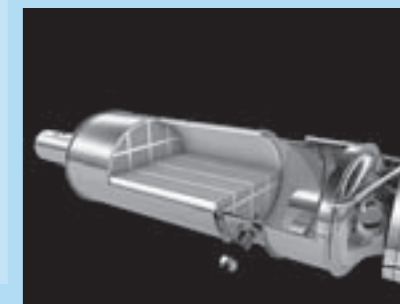
- Aerodynamic drag co-efficient: Cd 0.38

## Fuel tank capacity

65 litres (14.3 gallons).

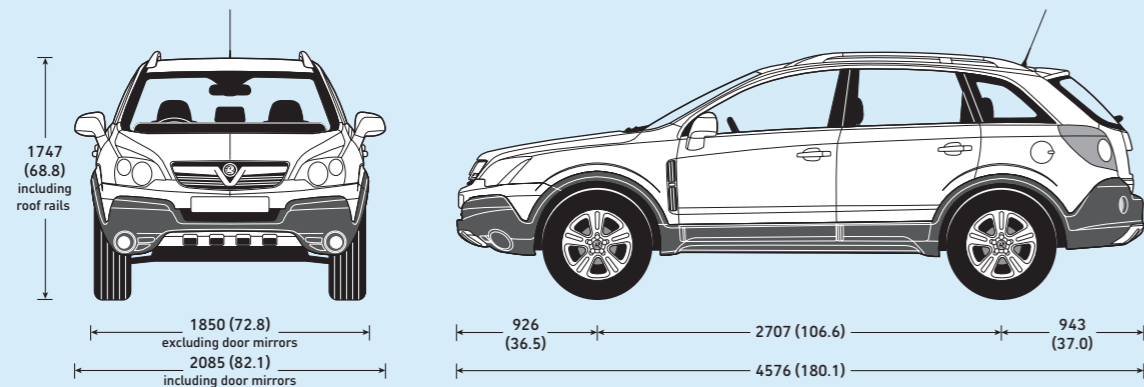


Rear suspension includes automatic self-levelling on 2.0CDTi 16v models.



Diesel Particulate Filter (DPF).

Exterior dimensions millimetres (inches)



Luggage capacities (measured using the ECIE method)

	litres	cu.ft.
Rear seats up (under luggage compartment cover)	370	13.1
Rear seats folded (to upper edge of front seat back)	865	30.5
Rear seats folded (to roof)	1420	50.1

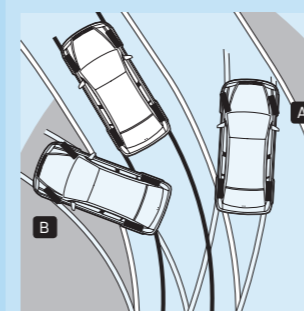
Off-road capabilities

Maximum ground clearance	200mm (7.9 inches)
Maximum wading depth	450mm (17.7 inches)
Maximum approach angle	24°
Maximum departure angle	23°
Maximum ramp angle	18°

Weights and towing data kg

	Kerbweight (Gross vehicle weight)	Max. towing weights Trailer with brakes (without brakes)
2.4i 16v	1746 (2225)	1500 (750)
E 2.0CDTi 16v	1792 (2505)	2000 (750)
E 2.0CDTi 16v automatic	1812 (2505)	1700 (750)
S 2.0CDTi 16v	1801 (2505)	2000 (750)
S 2.0CDTi 16v automatic	1821 (2505)	1700 (750)
SE 2.0CDTi 16v	1810 (2505)	2000 (750)
SE 2.0CDTi 16v automatic	1830 (2505)	1700 (750)

**Gross vehicle weight** is the total permissible weight of the vehicle including passengers and their luggage. To determine total carrying capacity, deduct kerbweight from gross vehicle weight. Note that the figure obtained will include the weight of the driver, passengers and any optional equipment or accessories. The **maximum roof rack loading** should not exceed 100kg. The **maximum towing weights** are based on the ability of the car, with two occupants of 70kg each, to restart on a 12% gradient, which is approximately 1 in 8.3, at sea level. At altitudes above 1500 metres, the engine output may drop with a corresponding reduction in towing capability. Any extra weight, such as luggage or additional passengers, should be deducted from the maximum towing weight. With a trailer fully loaded, **maximum noseweight** should not exceed 80kg. Always fit Vauxhall towing attachments and accessories available from your Vauxhall retailer. They are designed specifically for Vauxhall models and carry a 12-month guarantee.

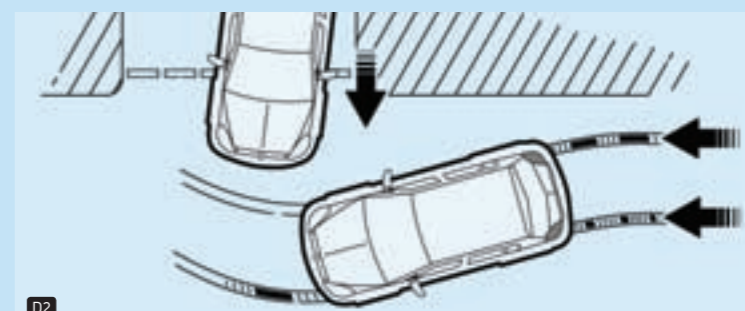


**D1. Switchable Electronic Stability Programme (ESP)**  
 ESP helps the driver maintain full control of the vehicle during adverse or emergency conditions. ESP technology is designed to monitor both the front and rear of the car independently and compare their respective directions of travel with the driver's steering wheel input. If either the front **A** (understeer) or rear **B** (oversteer) of the vehicle begins to slide, ESP gently applies corrective braking to the appropriate individual road wheel, controlling the slide and maintaining safe progress.

**A** When a vehicle is understeering excessively, it displays an unwillingness to change direction as the outside front tyre has become overloaded and begun to slide. In this instance, ESP will apply a braking force to the inside rear wheel, slowing it down and increasing the vehicle's yaw angle to help the front wheels change direction.

**B** During the more unusual oversteering situation the vehicle's yaw angle is excessive due to the outside rear tyre having lost grip. Although countersteering is an effective solution, it is often difficult to judge how much opposite lock to apply. ESP, however, will apply the correct braking force to the outside front wheel, which will reduce the yaw angle and bring the vehicle back under control.

The system fitted to Antara can be switched off for those situations, such as on snow or especially slippery ground, where a certain amount of wheelspin is desirable in order to maintain forward or backward motion.



**D2. Anti-lock Braking System (ABS) with cornering brake control**  
**D2.** Cornering brake control makes the car easier to control in extreme situations, particularly when braking sharply on a bend. It is particularly effective when carrying out emergency procedures, such as avoiding a child's ball that's rolled out from the kerb. The system works by sensing the different rotational speeds of the individual road wheels and co-ordinating the level of braking pressure applied to each wheel. Cornering brake control is an integral part of Antara's comprehensive ABS.