

# GTC

2016 Models Edition 2

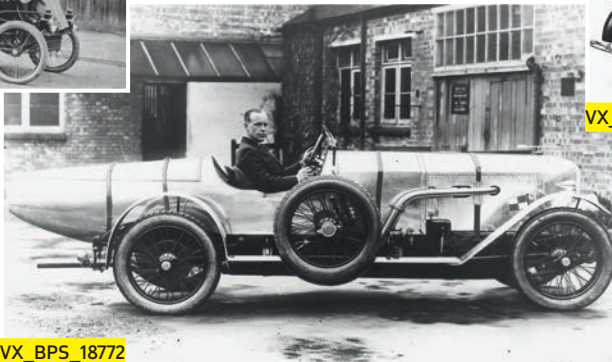


# WELCOME TO A LIFETIME OF FORWARD THINKING



VX\_BPS\_18771

1903 – Forward thinking has been in our nature from the very start. The 6HP, our first ever car, had two forward gears. And no reverse.



VX\_BPS\_18772

1922 – The Silver Arrow OE 30-98 was capable of speeds of over 100mph, this model was built for shipping magnate Sir Leonard Ropner to race at Brooklands.



VX\_BPS\_18773

1937 – The Vauxhall 10' H-type, the first British car to have integral construction.



VX\_BPS\_18774

1957 – The PA Cresta introduced Americana styling to the UK.



VX\_BPS\_18775

1984 – The MkII Astra introduced class-leading aerodynamic styling that still looks good today. The Formula Vauxhall Lotus ran a modified version of the Astra GTE's 2.0i 16v engine.



VX\_BPS\_18776

1971 – The formation of Dealer Team Vauxhall (DTV). The track car was the precursor to our enormous success in touring car racing.



VX\_BPS\_18777

1999 – The Zafira introduced the revolutionary Flex7® seating system inventing the seven-seat compact MPV.



VX\_BPS\_18780

2012 – Ampera. The first ever Extended-Range Electric Vehicle (E-REV) that redefined electric vehicle innovation leading to it being voted European Car Of The Year 2012.



VX\_BPS\_18782



VX\_BPS\_18779

1990 – The Calibra was the world's most aerodynamic production car.



VX\_BPS\_18781



VX\_BPS\_18778

1989 – The Lotus Carlton was the world's fastest production four-door saloon.

2012 – The 'RAK e'. A radical looking electric concept car for the future. Our forward thinking continues.



2015 – Introduction of Vauxhall OnStar. Your personal onboard assistant.

Scan this QR code with your smartphone for more information on the last 110 years of Vauxhall innovation. Don't forget to download a QR reader from your app store first.



**The world was a very different place in 1903 when Vauxhall made its first car.** We steered with tillers, not wheels. Six horsepower was considered pretty nippy. And King Edward's face was still on the stamps. But for us, one important thing hasn't changed: we started out with a philosophy of Forward Thinking and, over 110 years later, it still motivates everything we do. Who knows what innovations the next 110 years will bring?



## CONTENTS

### GTC

Exterior styling	6
GTC VXR	8
Interior styling	10
Driving dynamics	12
Chassis	14
ecoFLEX	16
Engines	18
Safety	20
Versatility	24
Infotainment	26
Vauxhall OnStar	28
My Vauxhall	30
GTC range	32
Wheels and tyres	38
VXR Styling	40
Feature options	42
Colours	44
Trims	46
Accessories	48
Specification	50





# FREE YOUR SPIRIT

**GTC. The designer's dream made reality.** Effortlessly sporty, positively engaging and brilliantly in tune with your driving emotions, GTC takes Vauxhall's dynamic performance mindset to the limit, with striking details and an unashamedly full-on attitude. GTC: never have three small letters promised so much excitement.

This brochure covers GTC SRi and Limited Edition models only. Some of the models shown include options and accessories available at extra cost. And not all of the features described are available on every model. So for all current model or equipment details visit the Vauxhall website: [www.vauxhall.co.uk](http://www.vauxhall.co.uk). The colours reproduced throughout this brochure may vary slightly from the actual paint colour. As a result, they should be used as a guide only. Your Vauxhall Retailer has a comprehensive display of our paint samples.

# UNLEASH YOUR PASSION

**Whichever way you look at it, the GTC oozes excitement.**

Those ground-hugging lines and powerfully sculpted alloys provide a clear pointer to the car's innate sporting potential – a potential borne out by driver-focused dynamics and a precision sports chassis.



Model illustrated features 20-inch alloy wheels, optional at extra cost.

VX\_GTC\_23377



# MAKE YOUR MARK

**GTC VXR.** With its drop-dead styling, race-bred interior, a bespoke chassis developed at the renowned Nürburgring and electrifying performance from a 280PS 2.0 litre turbocharged engine, it's sure to deliver the kind of driving experience that more than lives up to the VXR name.



VX\_VXR\_23599

**VXR**.co.uk

VX\_VXR\_24006





Model illustrated features VXR Leather Seat Pack, Flash Blue pearlescent paint and VXR Aero Pack, consisting of bi-plane rear roof spoiler, extended side sills and 20-inch alloy wheels, optional at extra cost.

# ENERGISE YOUR SENSES

The GTC's pure and overtly sporting exterior receives a powerful echo throughout the interior's strong lines, with defined textures, unique GTC sports detailing and unashamedly proud contours. Premium quality design cues combine with advanced features to create a sporty yet spacious driving environment guaranteed to invigorate your whole driving experience.





# SHARPEN YOUR RESPONSES

**GTC: beautifully balanced, above and below the skin.** With a bespoke sports chassis, specifically tuned to the demands of UK roads. Featuring HiPerStrut (High Performance Strut) front suspension and Watt's link rear set-up. The HiPerStrut system improves grip and allows more power to be applied during cornering, significantly reducing torque steer; the Watt's link reduces lateral movement at high speed for a smooth and stable ride. Optional FlexRide adds even greater precision to the GTC driving experience. Just the mere touch of a button changes the whole driving dynamic to taut sporting excitement or relaxed long distance cruising. See page 15 for more detail.

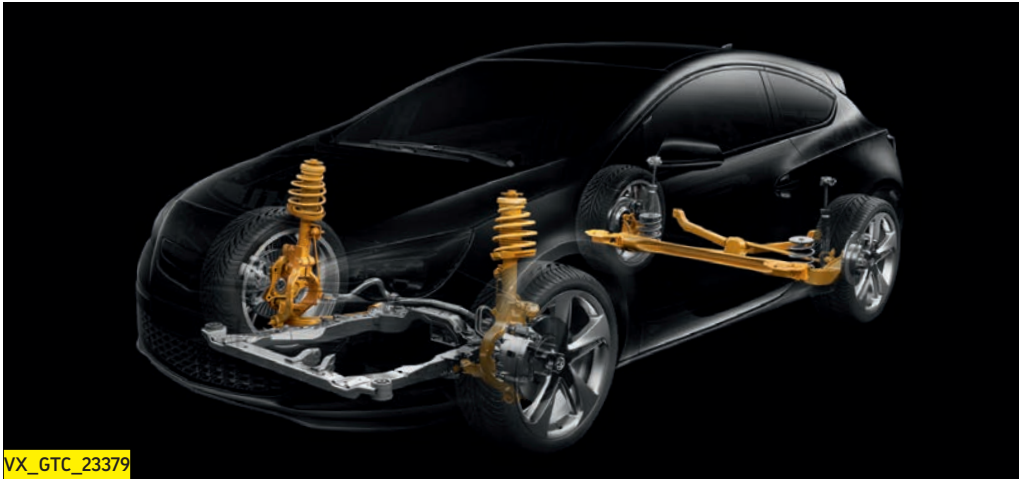


GTC

## ➤ EXPLOIT YOUR AGILITY

Poised, engaging and precise, the GTC chassis establishes the agile, spirited feel that characterises the car as a whole. Better still, the suspension has been carefully tuned to suit the specific demands of UK road surfaces, using specialist input from renowned chassis experts.





**Class-leading Sports suspension.** Front-wheel drive cars with powerful engines place excessive demands on conventional McPherson strut front suspension systems. Under heavy acceleration – especially in tight bends – front traction is compromised, resulting in torque steer which can affect the car's stability. The compact HiPerStrut (High Performance Strut) system – already seen in Insignia VXR – isolates the steering from the effects of engine torque, boosting steering precision and grip. It also improves handling and enhances ride quality. The compact Watt's link rear suspension delivers the stability benefits of multi-link systems without their weight and space penalties.



**Optional FlexRide chassis settings.** With a mere touch of a button, this optional feature allows you to change the GTC's whole driving dynamics – from 'Sport' to 'Tour' and back again. Using Continuous Damping Control technology, FlexRide automatically adjusts the dampers for excellent grip. In 'Tour' mode, it chooses the best settings for gentler straight-line driving. Switch to 'Sport' mode and it instantly sharpens the response of the speed-sensitive steering, accelerator and automatic transmission (if fitted). It also changes the colour of the ambient instrument lighting – from a cool white to a more dynamic red effect.

# ➤ MAXIMISE YOUR RESOURCES

The GTC not only looks great but is terrific to drive and offers superb fuel economy and performance without the need to make concessions on driving dynamics. The new 1.6CDTi 110PS and 136PS ecoFLEX 'Whisper diesel' units boast among the lowest vehicle CO<sub>2</sub> emissions in their class, with fuel-saving Start/Stop technology helping to reduce such figures to as little as 111g/km. So not only do you save money on Vehicle Excise Duty (VED) and lower company car taxation but the improved fuel economy means you'll save on your fuel bills too.

The GTC ecoFLEX models provide conclusive proof that you can save money on your motoring without the need to compromise on outright performance and driveability.

But then it's not just our cars that can help you save money. You can help yourself by simply adopting smarter driving techniques. Smooth throttle control, changing gear at around 2000rpm when accelerating and lifting off the accelerator earlier in order to slow your vehicle down, all contribute to efficient motoring.

GTC. Tuned to suit your lifestyle... and your financial resources, too.



Scan this QR code with your smartphone and explore the Vauxhall ecoFLEX range in more detail.







# ➤ FULFIL YOUR POTENTIAL

**Visually, GTC takes your breath away. Performance-wise, it carries your strongest emotions in its wake. The potential is limitless.**

GTC drivers can now choose from five powerful yet efficient turbocharged engines – each matched to a slick six-speed transmission or – on selected power units – a six-speed automatic.

Petrol engine choices include an all Euro 6 compliant line-up – a free-revving 120PS or 140PS 1.4i Turbo and a new 1.6i Turbo Start/Stop, producing an uncompromising 200PS. Also new to the range are two 'Whisper diesels' – a 1.6CDTi ecoFLEX common rail unit developing 110PS or 136PS and with emissions as low as 111g/km.





**Start/Stop technology.** With power comes responsibility. So GTC also features Vauxhall's cutting edge Start/Stop fuel saving and emissions reduction technology. The innovative system switches the engine off when you stop at the lights or in traffic, then restarts it automatically once the clutch is depressed. A wide range of in-built safety checks ensures total peace-of-mind in all circumstances. It's fitted to all manual GTC models.



VX\_GTC\_16986

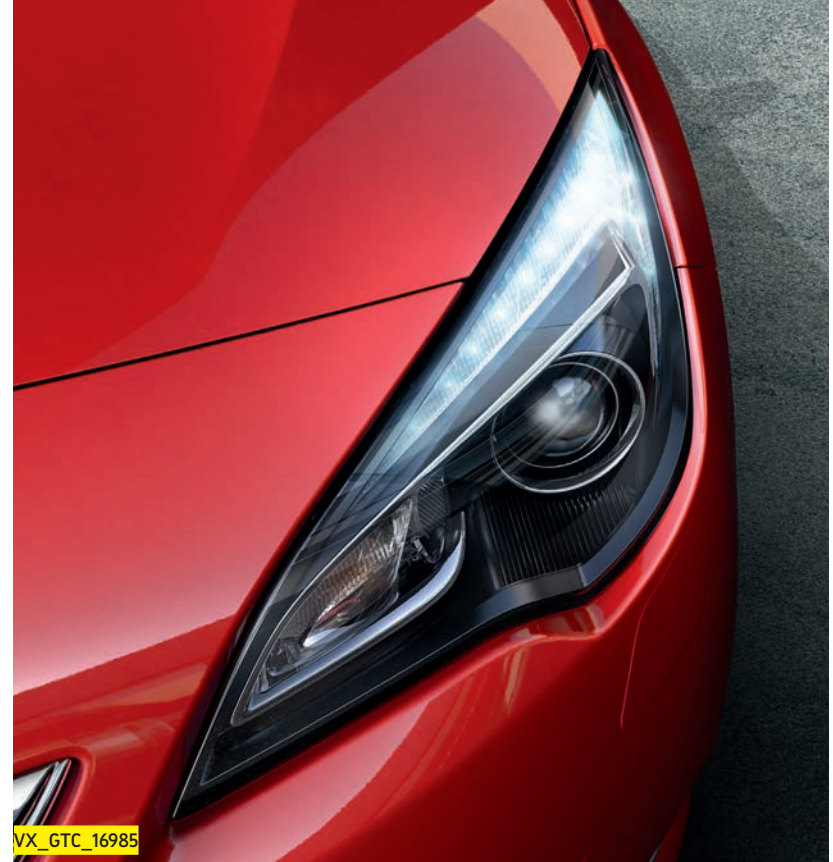
ENGINES						
	Wheel size (inches)	Combined fuel economy mpg (litres/100km)#	CO <sub>2</sub> emissions (g/km)#	VED (2015/16)*		Benefit in kind tax band† (2015/16 tax year)
				First year	Standard	
<b>Petrol</b>						
1.4i 120PS/140PS Turbo Start/Stop	18/19/20	47.1 (6.0)	142	£145	£145	23%
1.4i 140PS Turbo Automatic	18/19/20	42.8 (6.6)	154	£180	£180	25%
1.6i 200PS Turbo Start/Stop	18/19/20	44.8 (6.3)	149	£145	£145	24%
<b>Diesel</b>						
1.6CDTi 110PS Start/Stop ecoFLEX	18/19/20	67.3 (4.2)	111	£0	£30	20%
1.6CDTi 136PS Start/Stop ecoFLEX	18/19/20	65.7 (4.3)	115	£0	£30	21%

#Official Government Test Environmental Data. Official EU-regulated test data is provided for comparison purposes and actual performance will depend on driving style, road conditions and other non-technical factors.

\*Correct at time of publication. †Taxation information for guidance only. Please take professional advice on your own tax position.

# ➤ INTELLIGENT LIGHTING FOR EVERY ENVIRONMENT

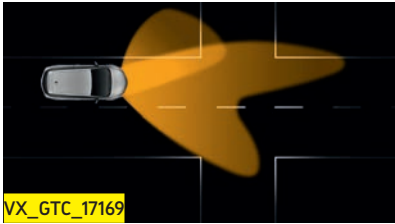
The GTC features an enhanced, fourth generation of the Adaptive Forward Lighting System. The AFL headlights change their pattern to suit the location and the weather. Sensing where you need the light most, they can even see round corners. And if something is coming the other way, they dip automatically.



**Intelligent Light Ranging (ILR).** Available as part of the Driving Assistance Pack when AFL is also specified, ILR extends the range of both headlights up to about 350 metres at speeds over 30mph. ILR also automatically adjusts the spread to avoid dazzling oncoming drivers. And if you're approaching an upward gradient, it'll even raise the beam to give you a better view of the road.



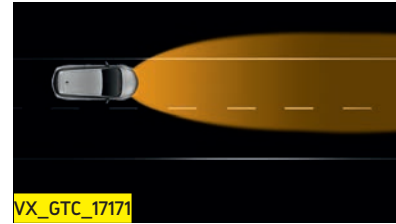
## Advanced Adaptive Forward Lighting.



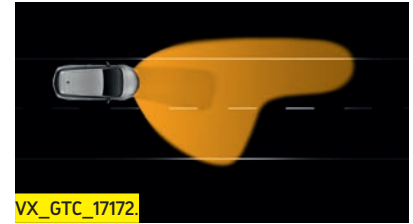
**Static cornering light.** Throws light 90 degrees left or right for enhanced lateral vision (up to 25mph, also when reversing).



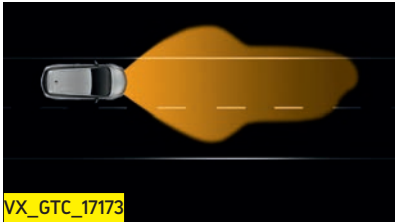
**Dynamic curve light.** Activated by steering angle and speed, the headlights swivel up to 15 degrees into the curve (any speed).



**High beam with assist.** Automatically switches from high to low beam as it detects oncoming or proceeding vehicles (over 25mph).



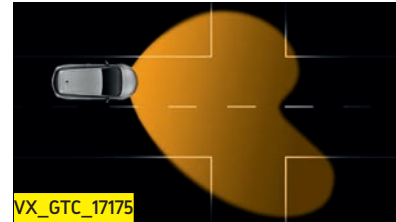
**Adverse weather light.** Wiper or rain sensor activated for better vision in bad weather conditions (up to 45mph).



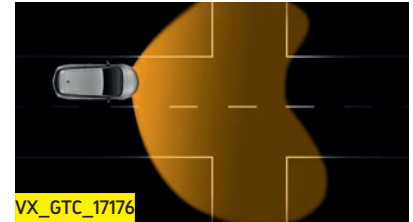
**Motorway light.** 140 metre range, higher and brighter than normal low beam, without dazzle (over 60mph).



**Country road light.** Wider spread and brighter light than normal low beam. 70 metre range without dazzle (35-70mph).



**Town light.** Wider and lower spread of light. Activated by vehicle speed together with street lighting (20-35mph).



**Pedestrian area light.** Wider spread of light (an extra eight degrees left and right) illuminates potential hazards (up to 20mph).

# ➤ SAFEGUARD YOUR INTERESTS

GTC is a showcase for Vauxhall's high-tech safety features, with active and passive technology delivering invaluable peace-of-mind.

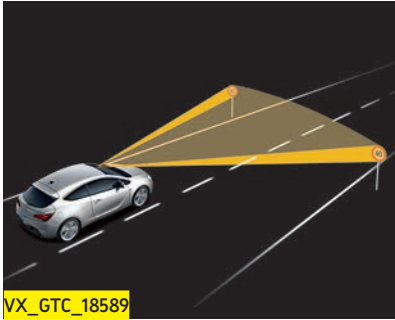
GTC combines advanced electronic options with proven safety features like front, side and curtain airbags and reinforced passenger safety cell with pre-defined deformation zones. Select the Driving Assistance Pack option featuring the innovative front camera system and the GTC will read the speed limit signs and display a reminder on the facia, helping you keep safe and legal. Leave your lane without a signal and it can also warn you – just in case you're tired or distracted. The system also constantly indicates the distance to the vehicle ahead, and alerts the driver if a collision is imminent.



**1. Active-safety front seat head restraints.** Minimise the risk of whiplash injury and guard against other head and upper body injuries.

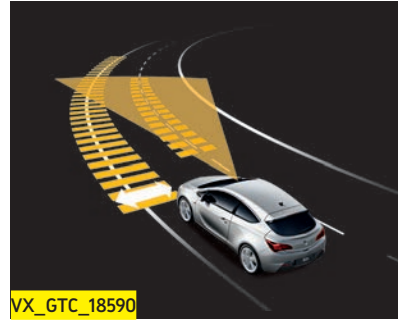


**2. Tyre pressure monitoring system.** Monitors the tyre pressure via sensors on the inner sides of the valves and activates a warning display if there is a loss of pressure.



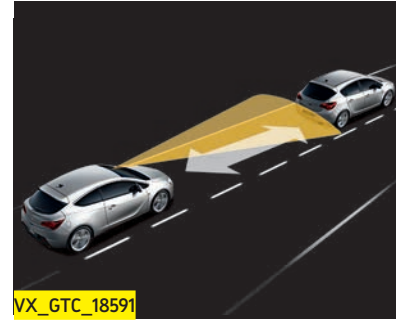
### **Traffic Sign Recognition (TSR).**

Utilising the front camera function, this clever system makes sure you're constantly made aware of speed limits, even when temporary signs are put up. TSR continually monitors road signs, and gives you a warning if you unintentionally stray over the limit. It can even read and display motorway electronic signs related to speed limits like rain or snow warnings.



### **Lane Departure Warning (LDW).**

LDW uses the front camera system to recognise lane marking lines, and emits an audible warning if your vehicle leaves its lane unintentionally (i.e. without you signalling), preventing potential accidents and reminding you of inattention or tiredness. The LDW system can be deactivated via a facia switch.



### **Forward Collision Alert (FCA).**

Available as part of the Driving Assistance Pack, FCA constantly shows the distance to the leading vehicle in the instrument panel, helping you to maintain a safe distance. In addition, FCA – active when the car is moving faster than 20mph – gives visual and audible warnings if you approach a slower-moving vehicle too fast.



**Side Blind Spot Alert.** Available as part of the optional Perimeter Protection Pack, this ultrasonic-based system helps prevent a potential collision with a vehicle in the neighbouring lane by continuously screening the blind spots on both sides of the car and provides a visible warning if the indicator is set to change to a lane where another car is detected.

## ➤ **MANAGE YOUR SPACE**

GTC combines stylish coupé character with genuine hatchback versatility. Comfortably seating up to five people – extremely comfortably if you specify the luxurious leather option – the GTC is a surprisingly practical car for everyday use, with a generous 380 litres of luggage space to boot.





**1 and 2. Generous storage features.** Stowage facilities are abundant, including a driver's storage compartment (illustrated) situated under the main lighting control, roomy front door pockets, storage pockets on the front seat backs and an illuminated glovebox.

**3. Versatile centre console.** Providing practicality at your fingertips, both GTC models feature a centre console unit complete with storage area and 12-volt auxiliary power socket. Models fitted with the optional (at extra cost) electric parking brake boast an additional central storage facility with twin covered drinks holders (illustrated right).



SRi model (illustrated left) features: Leather Pack, Navi 950 IntelliLink satellite navigation system, Infinity® Premium Sound System, electronic climate control, electric parking brake, rear parking distance sensors and FlexRide, optional at extra cost.

# ➤ IMPROVE YOUR DRIVETIME

Keep in touch, entertained and ahead of the queues with the latest premium GTC in-car communication systems featuring digital radio, USB and Bluetooth® connectivity and aux-in socket all as standard.

**1. CD 600 IntelliLink.** Standard on SRi models, the CD 600 IntelliLink system raises the bar for in-car entertainment units in this class. Highlights include seamlessly integrating your smartphone with IntelliLink technology and displaying the most important functions on the high-definition seven-inch screen, a CD/MP3 CD player, digital radio, AM/FM stereo radio with 36 station presets, USB connection and aux-in socket, six premium speakers and a seven-band graphic equaliser. You can make calls and stream audio using Bluetooth® and even features voice commands for phone calls. Excellent sound quality is assured from a Digital Sound Processor and a 4 x 20 watts output. The digital radio also means digital quality sound, a broader range of stations, easier to find by name and improved track display info on some stations.



1 VX\_GTC\_23812



**Navi 650 satellite navigation system.** Featuring the very latest in sat nav with seven-inch colour screen. It gives you fast access to map data and points of interest to keep you informed and on the move. Standard on Limited Edition models and optional at extra cost on SRI models.

**2. Navi 950 IntelliLink.** Upgrade to this navigation system and you'll also be able make calls and stream audio from your smartphone, tablet or other portable device using Bluetooth®. It even features voice commands for navigation and phone calls. So you stay connected for every minute of your journey. Optional at extra cost.

**3. AUPEO!®** With the pre-installed app Aupeo!® on all IntelliLink units, you get access to news, sport, podcasts and music via internet radio.

**4. Infinity® Premium Sound System.\*\*** The ultimate in GTC audio performance, with 7 x 45 watts (315 watts total), seven premium speakers and an eight-inch subwoofer. The Infinity system digitises the audio signal so it can be fine tuned with Digital Sound Processing for accurate sound response. For you, the difference is better all-round sound production under all driving conditions.

**Mobile phone portal.** All units feature Bluetooth® connection as standard and includes control from the steering wheel or voice recognition†.

**SMS readout.** For increased safety, incoming SMS are read out whilst the vehicle is in motion with the possibility to call back or send a predefined message. Messages are displayed on screen when the car is stationary.

\*Requires Aupeo! app downloaded to your Smartphone.

\*\*Fitting the Infinity® Premium Sound System will reduce loadspace volume by 38 litres.

†Voice recognition not available in conjunction with Navi 650.



## YOUR PERSONAL ON BOARD ASSISTANT

Many car brands talk about innovation as soon as they improve their cup holders, but this one-of-a-kind system is revolutionary: 24/7, 365 days a year, Vauxhall OnStar puts you in touch with an individual, not a machine.

With Vauxhall OnStar you have access to a host of innovations, from Vehicle Diagnostics and Smartphone Function to a fully integrated Wi-Fi Hotspot. In the event of an accident, Vauxhall OnStar even automatically calls for help<sup>1</sup>.

Best of all, OnStar services are free of charge on all GTC models for the first 12 months!

What's more, this unique service doesn't stop at national borders. You can access it virtually anywhere in Europe<sup>2</sup>.

**Motoring re-imagined.**



VX\_ONSTAR\_24179

# ➤ WHAT ONSTAR CAN DO FOR YOU<sup>1</sup>

SOS

## Automatic Crash Response.

We hope, this won't ever happen to you, but in the event of a crash, built-in vehicle sensors automatically alert an OnStar advisor. The expert will be immediately connected to your car to assess the situation and, if needed, notify the emergency services, providing them with your exact GPS location.



## Wi-Fi Hotspot<sup>2</sup>.

Cyberspace now comes on wheels. Thanks to the extra powerful OnStar aerial, you have a stable and quick Internet connection. Your Vauxhall GTC creates a mobile Wi-Fi Hotspot for up to seven devices.



## Smartphone App.

Referring to Murphy's Law your car keys will be in the locked car at least once in a lifetime. No problem, just start the OnStar app and remotely lock/unlock your door with your smartphone. Or use the remote control to sound the horn and flash the lights. The app also checks the oil life by the touch of a button.



## Stolen Vehicle Assistance.

"Where is my...? NO WAY!?!?" A stolen car is a nightmare – but from now on you can call our Vauxhall OnStar advisors to track and recover it together with the police.



## Vehicle Diagnostics.

Hey GTC, how are you doing today? You can ask OnStar to remotely check some of the key systems of your car like engine, transmission, emissions or airbags. If you prefer a newsletter, Vauxhall OnStar will automatically send you a monthly e-mail with this key data.



## Destination Download.

Hungry? Thirsty? Need an alternative route? Just Press the Service Button and our advisors will provide you with the information and locations you need. No need to waste time searching; OnStar automatically downloads the location to your Vauxhall's navigation system<sup>2</sup>.

<sup>1</sup>The Vauxhall OnStar Services rely on wireless communication networks and satellite positioning systems. <sup>2</sup>Some features may not be available in certain foreign countries.

Please check the comprehensive specifications and technical data available in the GTC price/specification guide PDF for an overview of any restrictions at [www.vauxhall.co.uk](http://www.vauxhall.co.uk) under 'Request a brochure'.

<sup>3</sup>In events such as a crash or if your vehicle is stolen.

# ➤ YOUR PRIVACY. YOUR CALL



One person alone decides what Vauxhall OnStar can and cannot do: YOU.

- Once you've registered and activated OnStar, you can access every OnStar Service. To ensure security, several services will ask for your PIN. For example, Remote Door Lock/Unlock or Stolen Vehicle Assistance.
- Press and hold the Privacy Button for approximately five seconds to mask your car's location at any time. If you change your mind, press the Privacy Button again for approximately five seconds to reveal your location. Only in emergencies<sup>3</sup> can OnStar override this.

OnStar Europe Ltd t/a Vauxhall OnStar will never sell your information on. Your information will only be disclosed to OnStar and GM Holdings LLC (USA), its affiliate companies (i.e. Adam Opel AG and General Motors UK Limited), your selected/preferred retailers, companies involved in providing or carrying out the OnStar Services and, at your request, to other service companies.

Privacy Policy – General Motors UK Ltd, General Motors Holdings LLC (Michigan, USA) and OnStar Europe Ltd may process your data for marketing, market research, tracking sales data and to contact you. On request, you can stop the processing of your personal data for marketing at any time.

Your personal details may be shared within the General Motors Group and suppliers, retailers and agents for the above purposes – we will not share your personal details with third parties for their independent use. The data may be transferred outside the European Economic Area ('EEA'). All steps reasonably necessary will be taken to ensure that your data is treated securely and in accordance with applicable laws. Please read our privacy policy – [www.vauxhall.co.uk/privacy](http://www.vauxhall.co.uk/privacy) for more detail.

# ➤ HOW CAN I GET ONSTAR?

Vauxhall OnStar is standard on every new Vauxhall GTC model.

To get it:

1. Your retailer will automatically forward your details onto OnStar when you purchase your Vauxhall GTC.
2. OnStar will send you an e-mail invitation so you can activate your account.
3. Complete your registration and set up your preferences.
4. OnStar is ready to go!

After the 12-month free trial period, you can decide to order a continuation of the OnStar Services. This will be subject to a fee.

To find out more, visit [www.vauxhall.co.uk/onstar](http://www.vauxhall.co.uk/onstar)



VX\_ONSTAR\_22828



VX\_MYVX\_23345



## ➤ HOW MY VAUXHALL SERVICES DO MORE FOR YOU

My Vauxhall is your one-stop shop to manage everything to do with your Vauxhall – from your Vauxhall OnStar account to organising your vehicle's next service to rewards and exclusive offers. Everything is targeted to you and the Vauxhall you drive.

- Manage your Vauxhall – take care of your Vauxhall online, book a service
- Access your Vauxhall OnStar Services – get diagnostics reports, manage your subscription and more
- Exclusive offers – stay up to date on special offers, latest news and current events
- Dealer locator – find your nearest Vauxhall retailer

If you already are a Vauxhall OnStar customer, you can access all the My Vauxhall services. Otherwise, you can register for My Vauxhall by following these easy steps:

1. When you order your car, your retailer will go through a simple pre-registration with you.
2. We will send you an e-mail invitation so you can activate your account.
3. Complete your registration.
4. My Vauxhall is ready to go!

To easily access My Vauxhall from your smartphone, just download the app from the Google Play Store or from Apple iTunes App Store.



**CREATE YOUR MODEL**





**Feature highlights include:**

- 18-inch seven-spoke alloy wheels
- Electronic stability programme
- Six airbags
- Active-safety front seat head restraints
- Vauxhall OnStar
- Air conditioning
- CD/MP3 CD player with digital and stereo radio
- USB connection with iPod control
- Aux-in socket
- Electrically operated front windows
- Three-spoke leather-covered steering wheel
- Cruise control
- Tyre pressure monitoring system
- Sports front seats with cloth seat facings and Moroccan-trimmed side bolsters
- Rain-sensitive windscreen wipers
- Automatic lighting control
- Front fog lights
- Multi-function trip computer
- Front centre armrest with storage facility
- Bluetooth® connectivity

Engine availability	Insurance groups (ABI)
1.4i 120PS Turbo Start/Stop	14E
1.4i 140PS Turbo Start/Stop	16E
1.4i 140PS Turbo Automatic	16E
1.6i 200PS Turbo Start/Stop	27E
1.6CDTi 110PS Start/Stop ecoFLEX	15E
1.6CDTi 136PS Start/Stop ecoFLEX	19E

Model illustrated features FlexRide, front and rear parking distance sensors, Electronic Climate Control, Navi 950 IntelliLink satellite navigation system and Infinity® Premium Sound System, all optional at extra cost.





Model illustrated in Power Red. 20-inch alloy wheels, optional at extra cost.

# ➤ LIMITED EDITION

## Additional features over and above SRi models:

- 20-inch alloy wheels
- Sports front seats with leather seat facings and Morrocana-trimmed side bolsters
- Ergonomic driver's seat
- Navi 650 satellite navigation system
- VXR styling comprising:
  - Sports style front bumper with turn indicators
  - Side sills
  - Rear lower skirt
  - Rear spoiler
  - Body-colour grille bar

## Engine availability

## Insurance groups (ABI)

1.4i 120PS Turbo Start/Stop	14E
1.4i 140PS Turbo Start/Stop	16E
1.4i 140PS Turbo Automatic	16E
1.6i 200PS Turbo Start/Stop	27E
1.6CDTi 110PS Start/Stop ecoFLEX	15E
1.6CDTi 136PS Start/Stop ecoFLEX	19E



Model illustrated features Driving Assistance Pack, optional at extra cost.



Model illustrated in Power Red.

# ➤ WHEELS AND TYRES

Impressive looks demand an impressive set of wheels and GTC doesn't disappoint.



## STANDARD WHEELS

SRI



VX\_GTC\_16669

18-inch alloy wheels with 235/50 R 18 low profile tyres.

LIMITED EDITION



VX\_GTC\_18598

20-inch alloy wheels with 245/40 R 20 ultra-low profile tyres.

## OPTIONAL WHEELS\*

SRI



VX\_GTC\_16795

19-inch alloy wheels with 235/45 R 19 ultra-low profile tyres.

SRI



VX\_GTC\_16672

20-inch alloy wheels with 245/40 R 20 ultra-low profile tyres.

**Please note:** An emergency spare wheel is available at extra cost in lieu of the emergency tyre inflation kit.

\*Optional at extra cost.

# > VXR STYLING PACK

By definition, GTC owners are looking for something special. Our unique VXR Styling Pack lets you create something very special indeed.

**1. VXR Exterior Styling Pack.** VXR styling products allow you to connect with the performance and excitement at the heart of the VXR brand. Taking that same ethos as our brief we have created a definitive line-up of VXR styling products that will add a degree of individuality to SRi models. The pack is available as a factory-fit option or as separate accessories fitted by your Vauxhall retailer.



Please note: Visible stainless steel exhaust tailpipe is not part of the VXR Exterior Styling Pack. SRi 1.6i 136PS Start/Stop ecoFLEX model illustrated also features 20-inch alloy wheels, optional at extra cost.

VX\_GTC\_23385





**2. Front lower spoiler.** The classic choice for the sports enthusiast, the spoiler helps emphasise GTC's distinctive ground-hugging front aspect.

**3. Rear lower skirt and 4. side sills.** With its broad wheelbase and low-slung chassis, GTC provides the ideal platform for dedicated VXR styling products.

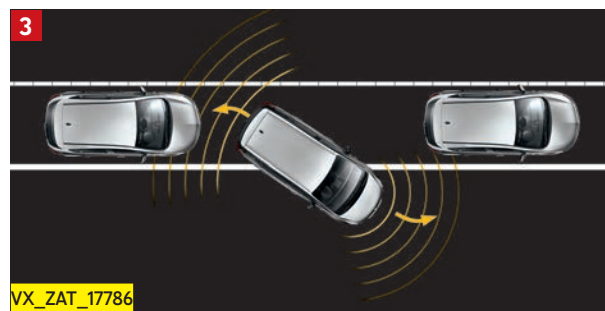
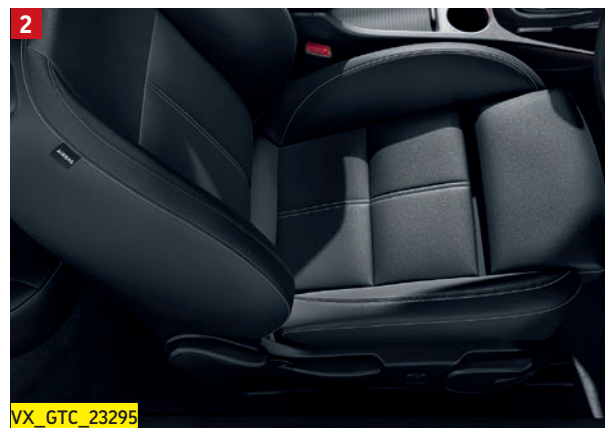
**5. Roof spoiler.** This adds an extra sporty accent to the roof line. Also available as a separate option.

## ➤ EXTEND YOUR OPTIONS

You don't get a GTC to decorate the front drive – you're going to demand a lot more from it than that! With a few well-chosen options, you can make sure you get a great deal more out of those hours spent on the road.



**1. Ergonomic sports seat.** As part of the Leather Pack – standard on Limited Edition and optional at extra cost on SRi models – the GTC’s orthopaedic ergonomic six-way adjustable sports driver’s seat finished in luxurious leather adjusts to suit your posture, perfectly. Both front seats are heated and feature superior side support plus, on the driver’s seat, tilt adjustment, electric lumbar support and an extendable seat cushion. Better still, the driver’s seat has won the coveted AGR\* seal of approval for helping to prevent the back pain and tension suffered by some car occupants.



**2. Adjustable seat cushion extension.** The ergonomic sports seat (available as part of the Leather Pack) features an adjustable and extendable seat cushion for additional leg support when you're travelling long distances.

**3. Advanced Park Assist.** Parallel parking will never be the same again. This smart option not only tells you when you drive by a suitably-sized parking space **4.** but also – while you're actually parking – shows you exactly how far to turn the steering wheel and how far you can drive backwards and forwards without an unwanted bump **5.** This feature is available as part of the optional Perimeter Protection Pack.\*\*



\*AGR (The Campaign for Healthier Backs) is an independent centre of excellence for ergonomics, based in Germany.

\*\*SRi models only.

# ➤ EXTERIOR COLOURS

From Summit White to Carbon Flash two-coat metallic, the GTC colours exude excitement and energy – just like the car itself.



SOLID (TWO-COAT)

VX\_GTC\_16651

Power Red

BRILLIANT\*

VX\_GTC\_16650

Summit White

VX\_GTC\_16648

Flaming Yellow

## TWO-COAT METALLIC\*



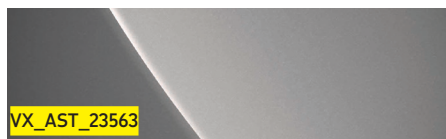
**Sovereign Silver**



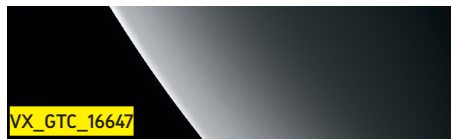
**Flip Chip Silver\*\***



**Deep Sky Blue\*\***

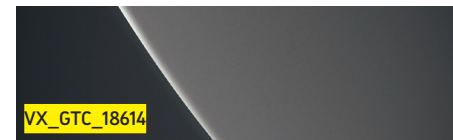


**Granite Grey\*\***

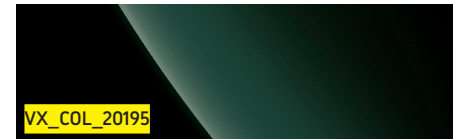


**Carbon Flash**

## TWO-COAT PEARLESCENT\*



**Asteroid Grey**



**Emerald Green\*\***

\*Optional at extra cost. \*\* Not available on Limited Edition models.

Due to the limitations of the printing process, the colours reproduced may vary slightly from the actual paint colour. As a result, they should be used as a guide only. Your Vauxhall Retailer has a comprehensive display of our paint samples.

# ➤ INTERIOR

**GTC's interior takes its cue from the athletic lines of the body – enhanced by an equally dynamic choice of fabrics, trims and colours.**

\*Ergonomic driver's seat only.

Due to the limitations of the printing process, the trims reproduced may vary slightly from the actual trim material. As a result, they should be used as a guide only.

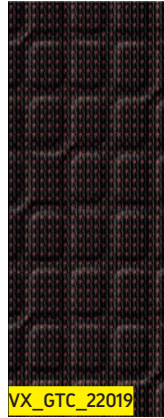


**IMOLA CLOTH/MORROCANA TRIM – JET BLACK**



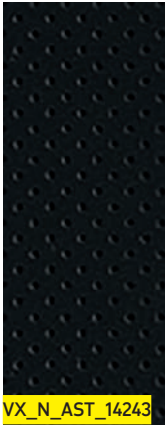
Standard on SRi models.

**IMOLA CLOTH/MORROCANA TRIM – MORRELLO RED**



No cost option on SRi models. Not available with Emerald Green and Deep Sky Blue exterior colours.

**LEATHER – ERGONOMIC SPORT SEAT\* – JET BLACK**



Standard on Limited Edition.  
Optional at extra cost on SRi models.

# ➤ EXPRESS YOUR INDIVIDUALITY

Whatever you're into, there's certain to be a Genuine Vauxhall Accessory with your name on it, all fitted by trained Vauxhall professionals. We've featured just a small selection of what's available here, so please check with your Vauxhall retailer for GTC accessory information or visit our website at [www.vauxhall.co.uk/accessories](http://www.vauxhall.co.uk/accessories)



**Thule surfboard carrier.** Used in conjunction with the Vauxhall base carrier, these quality systems, manufactured by Thule, open up a range of attachments from roof boxes to surfboard carriers to be transported on the roof without damaging your vehicle.



**FlexConnect.** A universal carrier system that attaches to the base of either of the front seat head restraints enabling a variety of comfort and convenience attachments to be installed such as an iPad holder (illustrated), folding picnic table or clothes hanger.





**1. Floor mats.** Both rubber and velour floor mats (illustrated) are available for your GTC. Both styles have unique fixing points which help keep them firmly in place.

**2. Body side protection mouldings.** Help protect your GTC against minor knocks and scrapes.

**3. Cargo tray.** Protect your GTC's load area against messy loads with this sturdy boot liner. Specially designed for a tailored fit, it provides maximum protection yet is easily removed for cleaning.

**4. VXR interior styling.** Add a touch of style with a set of VXR styling sports pedals.

**5. Rear bumper protection film.** Protects the rear bumper against minor scratches when loading and unloading.

**Further accessories include:**

- Detachable tow bars with 7- or 13-pin connection
- Smoker Pack
- Front passenger seat net
- Load-restraining floor net
- Alloy wheels
- Safety Pack
- Door sill covers
- Rear parking distance sensors



## Performance, fuel economy, emissions and VED rates

	Wheel size (inches)	Performance (manufacturer's figures)		Fuel economy mpg (litres/100km)#			CO <sub>2</sub> emissions (g/km)#	Vehicle Excise Duty*	
		Maximum speed (mph)	Acceleration 0-60mph (sec)	Urban driving	Extra-urban driving	Combined figure		First year rate	Standard rate
<b>Manual</b>									
1.4i 120PS Turbo S/S	18/19/20	119	10.1	37.2 (7.6)	54.3 (5.2)	47.1 (6.0)	142	£145	£145
1.4i 140PS Turbo S/S	18/19/20	125	8.9	37.2 (7.6)	54.3 (5.2)	47.1 (6.0)	142	£145	£145
1.6i 200PS Turbo S/S	18/19/20	143	7.3	34.4 (8.2)	53.3 (5.3)	44.8 (6.3)	149	£145	£145
2.0i 280PS Turbo	19/20	155	5.9	27.7 (10.2)	43.5 (6.5)	36.2 (7.8)	184	£350	£225
1.6CDTi 110PS S/S ecoFLEX	18/19/20	113	11.6	60.1 (4.7)	72.4 (3.9)	67.3 (4.2)	111	£0	£30
1.6CDTi 136PS S/S ecoFLEX	18/19/20	123	9.5	56.5 (5.0)	70.6 (4.0)	65.7 (4.3)	115	£0	£30
<b>Automatic</b>									
1.4i 140PS Turbo	18/19/20	124	9.9	33.2 (8.5)	52.3 (5.4)	42.8 (6.6)	154	£180	£180

\* = Correct at time of publication.






# = Official Government Test Environmental Data. Official EU-regulated test data is provided for comparison purposes and actual performance will depend on driving style, road conditions and other non-technical factors.

### Fuel tank capacity

All models: 56 litres (12.3 gallons)

If you wish to view more comprehensive specifications and technical data this is available online.  
To download/request a Price and Specification guide or Brochure, please visit [www.vauxhall.co.uk/brochure](http://www.vauxhall.co.uk/brochure)

## Tyre rating

Tyre size	Fuel efficiency group	Wet grip performance	External noise	
			Measured (dB)	Group
235/50 R 18	E	B	71	
235/45 R 19	E	B	68	
245/40 R 19	E	B	72	
245/40 R 20	E	B	71	
245/35 R 20	E	B	72	

Tyre rating according to EU Regulation 1222/2009

## Weights and towing data kg

	Gross vehicle weight	Max. towing weights Trailer with brakes (without brakes)
1.4i 120PS Turbo Start/Stop	1960	1350 (700)
1.4i 140PS Turbo Start/Stop	1960	1350 (700)
1.4i 140PS Turbo automatic	1980	1350 (700)
1.6i 200PS Turbo Start/Stop	1990	1500 (730)
2.0i 280PS Turbo	2045	- (-)
1.6CDTi 110PS Start/Stop ecoFLEX	2005	1500 (730)
1.6CDTi 136PS Start/Stop ecoFLEX	2010	1500 (730)

**Gross vehicle weight** is the total permissible weight of the vehicle including passengers and their luggage. The **maximum roof rack loading** should not exceed 100kg. The **maximum towing weights** are based on the ability of the car, with two occupants of 75kg each, to restart on a 12% gradient, which is approximately 1 in 8.3, at sea level. At altitudes above 1500 metres, the engine output may drop with a corresponding reduction in towing capability. Any extra weight, such as luggage or additional passengers, should be deducted from the maximum towing weight. With a trailer fully loaded, **maximum nose weight** should not exceed 75kg. Always fit Vauxhall towing attachments and accessories available from your Vauxhall retailer. They are designed specifically for Vauxhall models and carry a 12-month guarantee.

## Smarter driving tips

- **Drive at an appropriate speed:** Staying within the speed limit increases driver safety, reduces CO<sub>2</sub> emissions and saves fuel. At 70mph you could be using up to 9% more fuel than at 60mph and up to 15% more fuel than at 50mph
- **Drive smoothly at all times:** Anticipate the ebb and flow of the traffic to avoid harsh acceleration and braking
- **Reduce your revs:** Change gear earlier to help reduce fuel consumption – try 2500rpm with petrol engines and 2000rpm with diesel
- **Idling is wasting fuel:** If you're likely to be at a standstill for more than three minutes, switch off the engine to save fuel
- **Regularly check your tyre pressures:** Under inflated tyres increase CO<sub>2</sub> emissions whilst incorrectly inflated tyres can be unsafe. Always check your handbook for the correct tyre pressure. This will also help to increase the life of your tyres
- **Remove unnecessary items from the car:** Extra weight increases the engine's workload, whilst roof racks and bike carriers increase wind resistance. All burn more fuel and increase CO<sub>2</sub> emissions

# Trust Vauxhall

## Company Car Driver 3 Day Test Drive



Our free\* 3 Day Test Drive programme is open to all Company Car Drivers which allows you to choose any model in the current Vauxhall line-up (excluding all VXR models and Commercial Vehicles), with full insurance cover provided, to give you a meaningful length of time to make an informed decision about your next company car.

To book your free\* test drive just log on to [www.vauxhall3dtd.co.uk](http://www.vauxhall3dtd.co.uk) or call **0870 240 4848\*\***



## Fleet Customer Services

Our dedicated support services for fleet decision makers include factory demonstrators and information on whole life costs, company car taxation and finance.

For further information please call **0870 010 0651**.

## E10 Fuel

E10 fuel is cleared for use in all petrol-engined Vauxhall vehicles excluding models with the 2.2 litre direct injection petrol engine (code Z22YH) used in Vectra, Signum and Zafira models. Owners of these vehicles should continue to use regular unleaded or premium unleaded petrol.

## Proud Sponsor of Home Nations Football



## For more information...

For a brochure on any Vauxhall model (up to a maximum of three per caller) or location of your nearest Vauxhall retailer please call **0345 600 1500**.

Alternatively, details can be found on our website at [www.vauxhall.co.uk](http://www.vauxhall.co.uk)

## Join us online:



Scan this QR code with your smartphone for more information. Don't forget to download a QR reader from your app store first.

OnStar Europe Ltd t/a Vauxhall OnStar will never sell your information on. Your information will only be disclosed to OnStar and GM Holdings LLC (USA), its affiliate companies (e.g. Adam Opel AG and General Motors UK Limited), your selected/preferred retailers, companies involved in providing or carrying out the OnStar Services and, at your request, to other service companies.

Privacy Policy – General Motors UK Ltd, General Motors Holdings LLC (Michigan, USA) and OnStar Europe Ltd may process your data for marketing, market research, tracking sales data and to contact you. On request, you can stop the processing of your personal data for marketing at any time. Your personal details may be shared within the General Motors Group and suppliers, retailers and agents for the above purposes – we will not share your personal details with third parties for their independent use. The data may be transferred outside the European Economic Area (EEA). All steps reasonably necessary will be taken to ensure that your data is treated securely and in accordance with applicable laws. Please read our privacy policy – [www.vauxhall.co.uk/privacy](http://www.vauxhall.co.uk/privacy) for more detail.

\*The free 3 Day Test Drive programme is open to Company Car Drivers and excludes fuel and lubricants, congestion charges, parking and speeding fines and the £250 insurance excess (if applicable). It features a wide selection of models from the Vauxhall range (excluding all VXR models and Commercial Vehicles and subject to availability). Drivers must be aged 25 years or over, have held a full driving licence for at least a year and hold a major credit card. You will need to have your driving licence (and proof of identity (i.e. passport) where the driving licence is not a photocard licence) when your car is delivered. While every effort will be made to ensure that at least 3 days are provided for the test drive, this cannot always be guaranteed due to delivery and collection dates and timings. Available for UK Mainland only. Terms and conditions apply. \*\*Telephone lines open Monday-Friday 9.00am to 5.00pm excluding Bank Holidays. Calls may be recorded or monitored for quality and/or training purposes.

Every effort has been made to ensure that the contents of this publication were accurate and up-to-date at the time of going to press (February 2016). Vauxhall vehicles are equipped with components manufactured by various General Motors operating units and outside suppliers. The Company reserves the right to alter specifications and withdraw products from sale without notice. Any such alterations will be notified to Vauxhall retailers at the earliest opportunity, please consult your local retailer for the latest information. The specifications detailed within this brochure are not necessarily applicable to alternative models such as Special Editions. Details of any such models will be contained in specific literature or found on the Vauxhall website. Please note that Vauxhall retailers are not the agents of General Motors UK Limited and are not authorised to bind the Company by any specific or implied undertaking or representation. It is advisable to ensure that your motor insurance policy provides adequate cover for additional fitted options and accessories. Please note accessories shown are for illustrative purposes only. As part of Vauxhall's policy of environmental care, this brochure is printed on paper manufactured using Elemental Chlorine Free pulps from specially farmed, sustainable timber resources. All rights reserved. No part of this publication may be reproduced in any form or by any means, without the prior written permission of General Motors UK Limited.

