

GTC

2018 Models Edition 1



VX_GTC_25493



VAUXHALL

GO OUT IN STYLE

A rear view of a red Vauxhall GTC driving on a track at night. The car is in motion, with a blurred background of track lights and barriers. The license plate area displays 'GTC'. The Vauxhall logo is visible on the rear of the car.

GTC. Three little letters. One massive dose of excitement.

That's the Vauxhall GTC. Built because you want something special. Something to make you feel good and look great.

Effortlessly sporty and totally absorbing to drive, its attitude is unashamedly full-on. It's a three-door coupé savvy to the pure excitement of driving.

From its bespoke precision chassis and stylishly sculpted alloys, to the class-leading sports suspension and powerful turbocharged engines. The GTC has it all.

Time to get up and go.

Isn't life brilliant.

This brochure covers GTC SRi and Limited Edition models only. Some of the models shown include options and accessories available at extra cost. And not all of the features described are available on every model. So for all current model or equipment details visit the Vauxhall website: vauxhall.co.uk. The colours reproduced throughout this brochure may vary slightly from the actual paint colour. As a result, they should be used as a guide only. Your Vauxhall Retailer has a comprehensive display of our paint samples.



CONTENTS

Exterior styling	4	Vauxhall OnStar	26
GTC VXR	6	My Vauxhall	29
Interior styling	8	GTC range	30
Driving dynamics	10	Wheels and tyres	36
Chassis	12	VXR Styling	38
ecoTEC	14	Feature options	40
Engines	16	Colours	42
Safety	18	Trims	44
Versatility	22	Accessories	46
Infotainment	24		

UNLEASH YOUR PASSION



Whichever way you look at it, the GTC oozes excitement.

Those ground-hugging lines and powerfully sculpted alloys provide a clear pointer to the car's innate sporting potential – a potential borne out by driver-focused dynamics and a precision sports chassis.

Model illustrated features 20-inch alloy wheels and Lava Red brilliant paint, optional at extra cost.



MAKE YOUR MARK



VXR.co.uk



VX_VXR_24006



VX_VXR_23599

GTC VXR. With its drop-dead styling, race-bred interior, a bespoke chassis developed at the renowned Nürburgring and electrifying performance from a 280PS 2.0 litre turbocharged engine, it's sure to deliver the kind of driving experience that more than lives up to the VXR name.

Model illustrated features VXR Leather Seat Pack, Flash Blue pearlescent paint and VXR Aero Pack, consisting of bi-plane rear roof spoiler, extended side sills and 20-inch alloy wheels, optional at extra cost.

ENERGISE YOUR SENSES

A close-up, low-angle shot of a car's interior, focusing on the driver's side. The image shows the black leather seat with a textured pattern, the door panel with a silver handle and a speaker grille, and the window frame. The lighting is warm and dramatic, highlighting the textures and contours of the interior components. A dark grey diagonal shape is overlaid on the left side of the image, containing the text.

The GTC's pure and overtly sporting exterior receives a powerful echo throughout the interior's strong lines, with defined textures, unique GTC sports detailing and unashamedly proud contours. Premium quality design cues combine with advanced features to create a sporty yet spacious driving environment guaranteed to invigorate your whole driving experience.







SHARPEN YOUR RESPONSES

GTC: beautifully balanced, above and below the skin. With a bespoke sports chassis, specifically tuned to the demands of UK roads. Featuring HiPerStrut (High Performance Strut) front suspension and Watt's link rear set-up. The HiPerStrut system improves grip and allows more power to be applied during cornering, significantly reducing torque steer; the Watt's link reduces lateral movement at high speed for a smooth and stable ride. Optional FlexRide adds even greater precision to the GTC driving experience. Just the mere touch of a button changes the whole driving dynamic to taut sporting excitement or relaxed long distance cruising. See page 13 for more detail.

EXPLOIT YOUR AGILITY

Poised, engaging and precise, the GTC chassis establishes the agile, spirited feel that characterises the car as a whole. Better still, the suspension has been carefully tuned to suit the specific demands of UK road surfaces, using specialist input from renowned chassis experts.





VX_GTC_23288

Optional FlexRide chassis settings. With a mere touch of a button, this optional feature allows you to change the GTC's whole driving dynamics – from 'Sport' to 'Tour' and back again. Using Continuous Damping Control technology, FlexRide automatically adjusts the dampers for excellent grip. In 'Tour' mode, it chooses the best settings for gentler straight-line driving. Switch to 'Sport' mode and it instantly sharpens the response of the speed-sensitive steering, accelerator and automatic transmission (if fitted). It also changes the colour of the ambient instrument lighting – from a cool white to a more dynamic red effect.



VX_GTC_23379

Class-leading Sports suspension. Front-wheel drive cars with powerful engines place excessive demands on conventional McPherson strut front suspension systems. Under heavy acceleration – especially in tight bends – front traction is compromised, resulting in torque steer which can affect the car's stability. The compact HiPerStrut (High Performance Strut) system – already seen in Insignia VXR – isolates the steering from the effects of engine torque, boosting steering precision and grip. It also improves handling and enhances ride quality. The compact Watt's link rear suspension delivers the stability benefits of multi-link systems without their weight and space penalties.

MAXIMISE YOUR RESOURCES



The GTC provides conclusive proof that you can save money on your motoring without the need to compromise on outright performance and driveability.

The GTC not only looks great but is terrific to drive and offers superb fuel economy and performance without the need to make concessions on driving dynamics. The 1.6CDTi 110PS and 136PS ecoTEC 'Whisper diesel' units boast among the lowest vehicle CO₂ emissions in their class, with fuel-saving Start/Stop technology helping to reduce such figures to as little as 111g/km. So not only do you save money on Vehicle Excise Duty (VED) and lower company car taxation but the improved fuel economy means you'll save on your fuel bills too. But then it's not just our cars that can help you save money. You can help yourself by simply adopting smarter driving techniques. Smooth throttle control, changing gear at around 2,000rpm when accelerating and lifting off the accelerator earlier in order to slow your vehicle down, all contribute to efficient motoring.

GTC. Tuned to suit your lifestyle... and your financial resources, too.



VX_GTC_25489

FULFIL YOUR POTENTIAL

Visually, GTC takes your breath away. Performance-wise, it carries your strongest emotions in its wake. The potential is limitless.

GTC drivers can now choose from five powerful yet efficient turbocharged engines – each matched to a slick six-speed gearbox or – on selected power units – a six-speed automatic.

Petrol engine choices include an all Euro 6 compliant line-up – a free-revving 120PS or 140PS 1.4i Turbo and a new 1.6i Turbo Start/Stop, producing an uncompromising 200PS. Also within the range are two ‘Whisper diesels’ – a 1.6CDTi ecoTEC common rail unit developing 110PS or 136PS and with emissions as low as 111g/km.



PERFORMANCE, FUEL ECONOMY, EMISSIONS AND VED RATES

	PERFORMANCE (MANUFACTURERS FIGURES)			FUEL ECONOMY MPG (LITRES/100KM)#			CO ₂ emissions g/km*	VEHICLE EXCISE DUTY*		Benefit-in-Kind company car rates (2017/18 tax year)**
	Wheel size (inches)	Maximum speed (mph)	Acceleration 0-60mph (sec)	Urban driving	Extra-urban driving	Combined figure		First year rate	Standard rate	
MANUAL										
1.4i Turbo (120PS) S/S	18/19/20	119	10.1	36.2 (7.8)	54.3 (5.2)	46.3 (6.1)	144	£200	£140	27%
1.4i Turbo (140PS) S/S	18/19/20	125	8.9	36.2 (7.8)	54.3 (5.2)	46.3 (6.1)	144	£200	£140	27%
1.6i Turbo (200PS) S/S	18/19/20	143	7.3	32.1 (8.8)	52.3 (5.4)	42.2 (6.7)	154	£500	£140	29%
1.6CDTi (110PS) S/S ecoTEC	18/19/20	113	11.6	60.1 (4.7)	72.4 (3.9)	67.3 (4.2)	111	£160	£140	24%
1.6CDTi (136PS) S/S ecoTEC	18/19/20	123	9.5	56.5 (5.0)	70.6 (4.0)	65.7 (4.3)	115	£160	£140	25%
AUTOMATIC										
1.4i Turbo (140PS)	18/19/20	124	9.9	33.2 (8.5)	52.3 (5.4)	42.8 (6.6)	154	£500	£140	29%

*Correct at time of publication. ** Taxation information for guidance only. Please take professional advice on your own tax position. #Fuel consumption information is official government environmental data, tested in accordance with the relevant EU directive. Official EU-regulated test data is provided for comparison purposes and actual performance will depend on driving style, road conditions and other non-technical factors.



VX_GTC_16986

Start/Stop technology. With power comes responsibility. So GTC also features Vauxhall's cutting edge Start/Stop fuel saving and emissions reduction technology. The innovative system switches the engine off when you stop at the lights or in traffic, then restarts it automatically once the clutch is depressed. A wide range of in-built safety checks ensures total peace-of-mind in all circumstances. It's fitted to all manual GTC models.

INTELLIGENT LIGHTING FOR EVERY ENVIRONMENT

The GTC features an enhanced, fourth generation of the Adaptive Forward Lighting System. The AFL headlights change their pattern to suit the location and the weather. Sensing where you need the light most, they can even see round corners. And if something is coming the other way, they dip automatically.

Intelligent Light Ranging (ILR). Available as part of the Driving Assistance Pack when AFL is also specified, ILR extends the range of both headlights up to about 350 metres at speeds over 30mph. ILR also automatically adjusts the spread to avoid dazzling oncoming drivers. And if you're approaching an upward gradient, it'll even raise the beam to give you a better view of the road.



VX_GTC_16985



VX_GTC_18853

ADVANCED ADAPTIVE FORWARD LIGHTING



Static cornering light. Throws light 90 degrees left or right for enhanced lateral vision (up to 25mph, also when reversing).



Dynamic curve light. Activated by steering angle and speed, the headlights swivel up to 15 degrees into the curve (any speed).



High beam with assist. Automatically switches from high to low beam as it detects oncoming or proceeding vehicles (over 25mph).



Adverse weather light. Wiper or rain sensor activated for better vision in bad weather conditions (up to 45mph).



Motorway light. 140 metre range, higher and brighter than normal low beam, without dazzle (over 60mph).



Country road light. Wider spread and brighter light than normal low beam. 70 metre range without dazzle (35-70mph).



Town light. Wider and lower spread of light. Activated by vehicle speed together with street lighting (20-35mph).



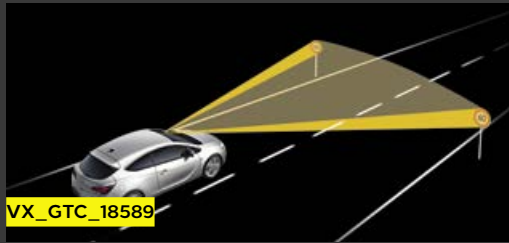
Pedestrian area light. Wider spread of light (an extra eight degrees left and right) illuminates potential hazards (up to 20mph).

SAFEGUARD YOUR INTERESTS

GTC is a showcase for Vauxhall's high-tech safety features, with active and passive technology delivering invaluable peace-of-mind.

GTC combines advanced electronic options with proven safety features like front, side and curtain airbags and reinforced passenger safety cell with pre-defined deformation zones. Select the Driving Assistance Pack option featuring the innovative front camera system and the GTC will read the speed limit signs and display a reminder on the facia, helping you keep safe and legal. Leave your lane without a signal and it can also warn you – just in case you're tired or distracted. The system also constantly indicates the distance to the vehicle ahead, and alerts the driver if a collision is imminent.





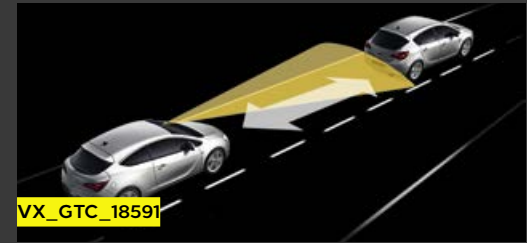
Traffic Sign Recognition (TSR).

Utilising the front camera function, this clever system makes sure you're constantly made aware of speed limits, even when temporary signs are put up. TSR continually monitors road signs, and gives you a warning if you unintentionally stray over the limit. It can even read and display motorway electronic signs related to speed limits like rain or snow warnings.



Lane Departure Warning (LDW).

LDW uses the front camera system to recognise lane marking lines, and emits an audible warning if your vehicle leaves its lane unintentionally (i.e. without you signalling), preventing potential accidents and reminding you of inattention or tiredness. The LDW system can be deactivated via a fascia switch.



Forward Collision Alert (FCA).

Available as part of the Driving Assistance Pack, FCA constantly shows the distance to the leading vehicle in the instrument panel, helping you to maintain a safe distance. In addition, FCA – active when the car is moving faster than 20mph – gives visual and audible warnings if you approach a slower-moving vehicle too fast.



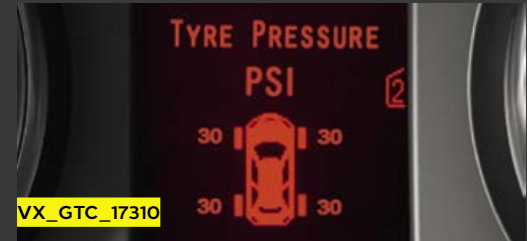
Side Blind Spot Alert.

Available as part of the optional Perimeter Protection Pack, this ultrasonic-based system helps prevent a potential collision with a vehicle in the neighbouring lane by continuously screening the blind spots on both sides of the car and provides a visible warning if the indicator is set to change to a lane where another car is detected.



Active-safety front seat head restraints.

Minimise the risk of whiplash injury and guard against other head and upper body injuries.



Tyre pressure monitoring system.

Monitors the tyre pressure via sensors on the inner sides of the valves and activates a warning display if there is a loss of pressure.



MANAGE YOUR SPACE



GTC combines stylish coupé character with genuine hatchback versatility. Comfortably seating up to five people – extremely comfortably if you specify the luxurious leather option – the GTC is a surprisingly practical car for everyday use, with a generous 380 litres of luggage space to boot.

1 and 2. Generous storage features. Stowage facilities are abundant, including a driver's storage compartment (illustrated) situated under the main lighting control, roomy front door pockets, storage pockets on the front seat backs and an illuminated glovebox.

3. Versatile centre console. Providing practicality at your fingertips, both GTC models feature a centre console unit complete with storage area and 12-volt auxiliary power socket. Models fitted with the optional (at extra cost) electric parking brake boast an additional central storage facility with twin covered drinks holders (illustrated).

SRi model (illustrated left) features: Leather Pack, Navi 950 IntelliLink satellite navigation system, Infinity® Premium Sound System, electronic climate control, electric parking brake, rear parking distance sensors and FlexRide, optional at extra cost.

IMPROVE YOUR DRIVETIME

Keep in touch, entertained and ahead of the queues with the latest premium GTC in-car communication systems featuring digital radio, USB and Bluetooth® connectivity and aux-in socket all as standard.

1. CD 600 IntelliLink. Standard on SRi models, the CD 600 IntelliLink system raises the bar for in-car entertainment units in this class. Highlights include seamlessly integrating your smartphone with IntelliLink technology and displaying the most important functions on the high-definition seven-inch screen, a CD/MP3 CD player, digital radio, AM/FM stereo radio with 36 station presets, USB connection and aux-in socket, six premium speakers and a seven-band graphic equaliser. You can make calls and stream audio using Bluetooth® and even features voice commands for phone calls. Excellent sound quality is assured from a Digital Sound Processor and a 4 x 20 watts output. The digital radio also means digital quality sound, a broader range of stations, easier to find by name and improved track display info on some stations.

1

VX_GTC_23812



Navi 650 satellite navigation system. Featuring the very latest in sat nav with seven-inch colour screen. It gives you fast access to map data and points of interest to keep you informed and on the move. Standard on Limited Edition models and optional at extra cost on SRI models.

2. Navi 950 IntelliLink. Upgrade to this navigation system and you'll also be able make calls and stream audio from your smartphone, tablet or other portable device using Bluetooth®. It even features voice commands for navigation and phone calls. So you stay connected for every minute of your journey. Optional at extra cost.

3. AUPEO!® With the pre-installed app Aupeo!® on all IntelliLink units, you get access to news, sport, podcasts and music via internet radio.

4. Infinity® Premium Sound System.** The ultimate in GTC audio performance, with 7 x 45 watts (315 watts total), seven premium speakers and an eight-inch subwoofer. The Infinity system digitises the audio signal so it can be fine tuned with Digital Sound Processing for accurate sound response. For you, the difference is better all-round sound production under all driving conditions.

Mobile phone portal. All units feature Bluetooth® connection as standard and includes control from the steering wheel or voice recognition†.

SMS readout. For increased safety, incoming SMS are read out whilst the vehicle is in motion with the possibility to call back or send a predefined message. Messages are displayed on screen when the car is stationary.

Vauxhall OnStar. A personal connectivity and service assistant with a 4G Wi-Fi Hotspot (see pages 26-29 for more details).

*Requires Aupeo! app downloaded to your Smartphone.

**Fitting the Infinity® Premium Sound System will reduce loadspace volume by 38 litres.

†Voice recognition not available in conjunction with Navi 650.



THIS COULD BE THE IDEAL TRAVEL COMPANION

Journeys go faster with great company. It's just a good feeling to have someone with you along the way.

Which is why your GTC* comes with Vauxhall OnStar¹, a personal connectivity and service assistant who's always there for you, 24/7, 365 days a year.

At the push of a button, it puts you in touch with someone to help you – could be help to find or unlock your car or immediate help in an emergency – whatever happens, it's there.

Oh yes, and how could we forget it also has a super-handy 4G Wi-Fi Hotspot². Perfect for hooking up to seven devices (I want to be at that party).

Isn't this just the kind of mate you'd like on your next road trip?

And we guarantee it won't complain about the music you play.

*Standard on all GTC models. ¹Vauxhall are not responsible for the provision of OnStar services or Wi-Fi services. OnStar Services require activation and account with OnStar Europe Ltd, (a GM Company). Wi-Fi services require additional account with OnStar Europe Limited's mobile network operator supplier. All services subject to mobile network coverage and availability. Use of OnStar services (except Wi-Fi) is free of charge for 12 months from registration date or delivery of vehicle, whichever comes first. Wi-Fi trial has a time limit and capped data allowance. Charges apply after expiry of applicable trial periods. Check vauxhall.co.uk/onstar for service limitations and charges. ² The 4G Wi-Fi Hotspot services require account with OnStar Europe Ltd. and nominated network operator. The Wi-Fi trial has a time limit and capped data allowance. Charges apply thereafter. All services subject to mobile network coverage and availability.





SOS

YOU'RE SAFE

With OnStar you have emergency assistance at your fingertips, available 24 hours a day, 365 days a year.

// Automatic Crash Response¹:

in case of a crash and an airbag deploys, our advisors automatically connect to your car. If needed, they immediately brief the emergency services with key car information and can send them to your exact location.

// 24-Hour Emergency Call Service¹:

you or a passenger are not feeling well? Push the red SOS button and our advisors make sure to send help right away.

// Roadside Assistance^{1,3}:

if you have a flat tyre or a warning light in the dashboard goes on, just contact our advisors and they will send Roadside Assistance to your location, if required. This is even more valuable in areas with weaker mobile phone coverage or if your smartphone has run out of battery.

// Stolen Vehicle Assistance¹:

in case your car gets stolen, report it to the police and get a crime reference number. Once the car stops and is turned off, OnStar blocks the ignition so the car can't be restarted again and provides the police with the exact vehicle location to help retrieve your car safely.



YOU'RE WELL CONNECTED

Nowadays, we're pretty used to having Wi-Fi on tap almost everywhere. So why not your car? And you can use the smartphone app to view the status of some functions, locate your car, and lock or unlock it if needs be.

// Wi-Fi Hotspot^{1,2}:

a fast and stable Internet connection enables you and your passengers to work, surf or just stream movies on up to 7 devices – thanks to the powerful OnStar roof antenna.

// Remote Control^{1,4}:

if you forgot to lock your car, you can use your smartphone to remotely lock or unlock it, even from afar, thanks to the **My Vauxhall Smartphone App**.

// Car Locator^{1,4}:

forgot where you've parked? Pinpoint your car's location on the app. If you are close and still do not see it, just blink the headlights or honk the horn to see where you've parked.



YOU'RE LOOKED AFTER

Who wouldn't want a personal assistant? At the touch of a button, you'll be connected to an assistant who's at your service – 24 hours a day, 7 days a week.

// Hotel Booking^{1,5}:

plans changed? Or too tired to keep driving? Let our advisors take care of your hotel booking en route, powered by Booking.com. Just press the blue Service Button.

// Destination Download^{1,6}:

no more address typing! Our advisors assist you in finding an alternative route, a restaurant or a petrol station. They will remotely download the address onto your in-built navigation system, too.

// Parking Service^{1,7}:

never search for a car park space again! Using Parkopedia.com, OnStar can find the nearest car park to your destination. That way, before you even get there, you'll already know the availability and parking fee. With destination download⁶, OnStar can send the information direct to your sat nav, making it even easier. How's that for personal service? All without leaving your new GTC.

³ OnStar will direct a professional breakdown recovery team to your location. If your car is within the Vauxhall New Vehicle Roadside Assistance coverage period, OnStar will connect with the Vauxhall Roadside Assistance service, who will send help free of charge, subject to the Vauxhall Roadside Assistance terms and conditions. If your vehicle is outside the coverage of the Vauxhall New Vehicle Roadside Assistance service, the provider of the breakdown recovery service may apply charges for the services provided. ⁴ Some elements of Smartphone App may not be available for all cars/trim levels. Check vauxhall.co.uk/onstar for service limitations and charges. ⁵ An OnStar advisor can help you book a hotel room using Booking.com, subject to Booking.com user terms and privacy statement, which can be found on the Booking.com website, and the applicable terms and conditions for your hotel. OnStar assists you in making a booking and is not responsible for the services provided by Booking.com or your hotel. Email address and credit card required. ⁶ Some elements of Smartphone App and Destination Download may not be available for all cars/trim levels. An embedded Vauxhall navigation unit and map data are requirements for the Destination Download service. Check vauxhall.co.uk/onstar for service limitations and charges. ⁷ Only available for car parks which are listed in Parkopedia. Information about availability applies for the time of contact with OnStar.

HOW TO GET ONSTAR

Vauxhall OnStar is standard on all GTC models.

1. We will send you an e-mail so you can activate your account – then just complete your registration and set your preferences.
2. Just activate OnStar when you take delivery of your new Vauxhall GTC.
3. OnStar is ready to go!

Best of all the OnStar services are free of charge for the first 12 months!
You'll also get a free data trial period for the 4G Wi-Fi Hotspot².

You can purchase Wi-Fi Hotspot data packages separately from the nominated network provider by following the instructions on vauxhall.co.uk/onstar
Charges apply after the free trial period.



To ensure your privacy, you can turn OnStar off and on anytime*.
Find out more at vauxhall.co.uk/onstar

*OnStar can only override the Privacy Button in an emergency or if your car is reported stolen.

1 The OnStar services require activation and account with OnStar Europe Ltd. Charges apply after applicable trial period. All services subject to mobile network coverage and availability. The OnStar subscription packages could be different from the services included in the free trial package. Check vauxhall.co.uk/onstar for details of availability, coverage and charges. Terms and conditions apply.

2 The 4G Wi-Fi Hotspot services require account with OnStar Europe Ltd. and nominated network operator. The Wi-Fi trial has a time limit and capped data allowance. Charges apply thereafter.

All services subject to mobile network coverage and availability.



VX_CRO_26708

GET MORE FROM YOUR CAR WITH MY VAUXHALL

My Vauxhall is your one-stop shop for everything to do with your GTC. Manage your OnStar account. Organise your car's next service. Get rewards and exclusive savings for you.

- // **Manage your Vauxhall** – take care of your Vauxhall online and book a service
- // **Access your OnStar services** – get diagnostics reports, manage your subscription and more
- // **Exclusive offers** – stay up to date on special offers, the latest news and current events
- // **Retailer locator** – find your nearest Vauxhall Retailer

HOW TO GET MY VAUXHALL

If you already use Vauxhall OnStar, you can access all the My Vauxhall services. Otherwise, simply register for My Vauxhall this way:

1. When you order your GTC, your retailer will help you pre-register for My Vauxhall.
2. We'll send you an e-mail invitation to activate your My Vauxhall account and complete your registration.
3. My Vauxhall is ready to go – use it through any web browser, or the My Vauxhall app on your mobile device, available to download from the Google Play or Apple App Store.



VX_MYVX_27574

CHOOSE YOUR MODEL







Model illustrated features Lava Red brilliant paint and 20-inch alloy wheels, optional at extra cost.

VX_GTC_25495



VX_GTC_23673



SRI

Feature highlights include:

- // 18-inch seven-spoke alloy wheels
- // Electronic stability programme
- // Six airbags
- // Active-safety front seat head restraints
- // Vauxhall OnStar
- // Air conditioning
- // CD/MP3 CD player with digital and stereo radio
- // USB connection with iPod control
- // Aux-in socket
- // Electrically operated front windows
- // Three-spoke leather-covered steering wheel
- // Cruise control
- // Tyre pressure monitoring system
- // Sports front seats with cloth seat facings and Moroccan-trimmed side bolsters
- // Rain-sensitive windscreen wipers
- // Automatic lighting control
- // Front fog lights
- // Multi-function trip computer
- // Front centre armrest with storage facility
- // Bluetooth® connectivity

Engine availability

- 1.4i Turbo (120PS) S/S
- 1.4i Turbo (140PS) S/S
- 1.4i Turbo (140PS) Automatic
- 1.6i Turbo (200PS) S/S
- 1.6CDTi (110PS) S/S ecoTEC
- 1.6CDTi (136PS) S/S ecoTEC

Insurance groups (ABI)

- 14E
- 16E
- 16E
- 27E
- 15E
- 19E

S/S = Start/Stop.

Model illustrated features FlexRide, front and rear parking distance sensors, Electronic Climate Control, Navi 950 IntelliLink satellite navigation system and Infinity® Premium Sound System, all optional at extra cost.

LIMITED EDITION

Additional features over and above SRi models:

- // 20-inch alloy wheels
- // Sports front seats with leather seat facings and Morrocana-trimmed side bolsters
- // Ergonomic driver's seat
- // Navi 650 satellite navigation system
- // VXR styling comprising:
 - Sports style front bumper with turn indicators
 - Side sills
 - Rear lower skirt
 - Rear spoiler
 - Body-colour grille bar

Engine availability

- 1.4i Turbo (120PS) S/S
- 1.4i Turbo (140PS) S/S
- 1.4i Turbo (140PS) Automatic
- 1.6i Turbo (200PS) S/S
- 1.6CDTi (110PS) S/S ecoTEC
- 1.6CDTi (136PS) S/S ecoTEC

Insurance groups (ABI)

- 14E
- 16E
- 16E
- 27E
- 15E
- 19E

S/S = Start/Stop.

Model illustrated features Driving Assistance Pack, optional at extra cost.



VX_GTC_23293



VX_GTC_20834

Model illustrated features Lava Red brilliant paint, optional at extra cost.

WHEELS AND TYRES

Impressive looks demand an impressive set of wheels and GTC doesn't disappoint.





STANDARD WHEELS

SRI



18-inch alloy wheels with 235/50 R 18 low profile tyres.

LIMITED EDITION



20-inch alloy wheels with 245/40 R 20 ultra-low profile tyres.

OPTIONAL WHEELS*

SRI



19-inch alloy wheels with 235/45 R 19 ultra-low profile tyres.

SRI



20-inch alloy wheels with 245/40 R 20 ultra-low profile tyres.

Please note: An emergency spare wheel is available at extra cost in lieu of the emergency tyre inflation kit.
*Optional at extra cost.

VXR STYLING PACK

By definition, GTC owners are looking for something special. Our unique VXR Styling Pack lets you create something very special indeed.

1. VXR Exterior Styling Pack. VXR styling products allow you to connect with the performance and excitement at the heart of the VXR brand. Taking that same ethos as our brief we have created a definitive line-up of VXR styling products that will add a degree of individuality to SRi models. The pack is available as a factory-fit option or as separate accessories fitted by your Vauxhall Retailer.

Please note: Visible stainless steel exhaust tailpipe is not part of the VXR Exterior Styling Pack. SRi 1.6i (136PS) Start/Stop ecoTEC model illustrated also features 20-inch alloy wheels, optional at extra cost.

1

VX_GTC_25492





2



VX_GTC_16980

3



VX_GTC_21839

4



VX_GTC_16981

5



VX_GTC_25492

2. Front lower spoiler. The classic choice for the sports enthusiast, the spoiler helps emphasise GTC's distinctive ground-hugging front aspect.

3. Rear lower skirt and 4. side sills. With its broad wheelbase and low-slung chassis, GTC provides the ideal platform for dedicated VXR styling products.

5. Roof spoiler. This adds an extra sporty accent to the roof line. Also available as a separate option.

EXTEND YOUR OPTIONS

The background of the page is a high-angle, close-up photograph of a car's interior. It shows the front passenger seat and the driver's seat, both upholstered in black leather with visible stitching. The center console is partially visible, featuring a black gear shift knob and handbrake. The lighting is dramatic, highlighting the textures of the leather and the contours of the seats. A diagonal grey line separates the text area on the left from the image on the right.

You don't get a GTC to decorate the front drive – you're going to demand a lot more from it than that! With a few well-chosen options, you can make sure you get a great deal more out of those hours spent on the road.



1. Ergonomic sports seat. As part of the Leather Pack – standard on Limited Edition and optional at extra cost on SRi models – the GTC's orthopaedic ergonomic six-way adjustable sports driver's seat finished in luxurious leather adjusts to suit your posture, perfectly. Both front seats are heated and feature superior side support plus, on the driver's seat, tilt adjustment, electric lumbar support and an extendable seat cushion. Better still, the driver's seat has won the coveted AGR* seal of approval for helping to prevent the back pain and tension suffered by some car occupants.

2. Adjustable seat cushion extension. The ergonomic sports seat (available as part of the Leather Pack) features an adjustable and extendable seat cushion for additional leg support when you're travelling long distances.

3. Advanced Park Assist. Parallel parking will never be the same again. This smart option not only tells you when you drive by a suitably-sized parking space **4**, but also – while you're actually parking – shows you exactly how far to turn the steering wheel and how far you can drive backwards and forwards without an unwanted bump **5**. This feature is available as part of the optional Perimeter Protection Pack.**

*AGR (The Campaign for Healthier Backs) is an independent centre of excellence for ergonomics, based in Germany.

**SRi models only.



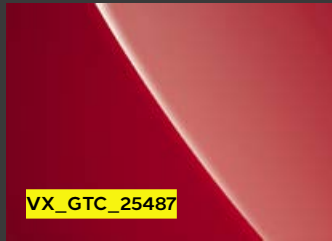
EXTERIOR COLOURS*

From Summit White to Mineral Black two-coat metallic, the GTC colours exude excitement and energy – just like the car itself.

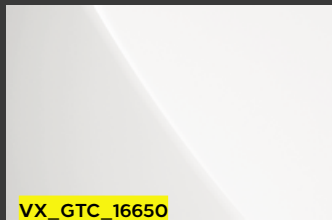
BRILLIANT



Flaming Yellow



Lava Red



Summit White

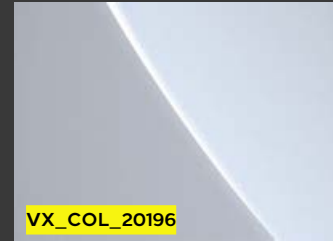
TWO-COAT METALLIC



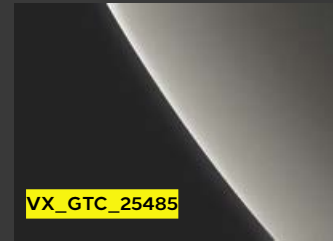
Sovereign Silver



Mineral Black



Flip Chip Silver



Cosmic Grey

TWO-COAT PREMIUM



Emerald Green



Darkmoon Blue

* Please refer to the latest GTC Price and Specification Guide available from vauxhall.co.uk for details of colour availability by model and prices.

Due to the limitations of the printing process, the colours reproduced may vary slightly from the actual paint colour. As a result, they should be used as a guide only. Your Vauxhall Retailer has a comprehensive display of our paint samples.

INTERIOR



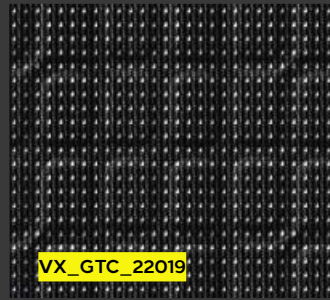
GTC's interior takes its cue from the athletic lines of the body – enhanced by an equally dynamic choice of fabrics, trims and colours.

VX_GTC_23609

Due to the limitations of the printing process, the trims reproduced may vary slightly from the actual trim material. As a result, they should be used as a guide only.



IMOLA CLOTH/MORROCANA TRIM – JET BLACK



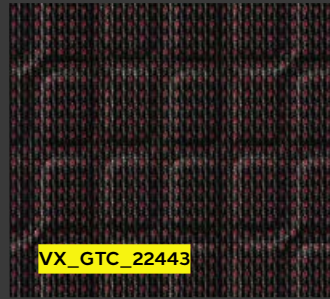
VX_GTC_22019



VX_GTC_22022

Standard on SRi models.

IMOLA CLOTH/MORROCANA TRIM – MORRELLO RED



VX_GTC_22443



VX_GTC_22023

No cost option on SRi models. Not available with Flaming Yellow, Darkmoon Blue and Emerald Green exterior colours.

LEATHER – ERGONOMIC SPORT SEAT* – JET BLACK



VX_N_AST_14243



VX_GTC_22024

Standard on Limited Edition. Optional at extra cost on SRi models.

*Ergonomic driver's seat only.

EXPRESS YOUR INDIVIDUALITY

Whatever you're into, there's certain to be a Genuine Vauxhall Accessory with your name on it, all fitted by trained Vauxhall professionals. We've featured just a small selection of what's available here, so please check with your Vauxhall Retailer for GTC accessory information or visit our website at vauxhall.co.uk/accessories



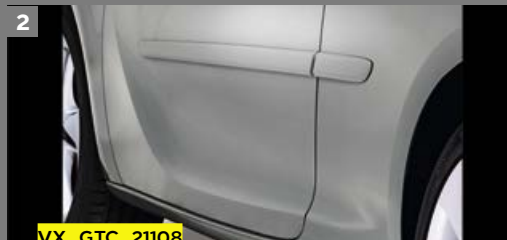
VX_GTC_25497

Thule surfboard carrier. Used in conjunction with the Vauxhall base carrier, these quality systems, manufactured by Thule, open up a range of attachments from roof boxes to surfboard carriers to be transported on the roof without damaging your vehicle.



VX_GTC_25798

FlexConnect. A universal carrier system that attaches to the base of either of the front seat head restraints enabling a variety of comfort and convenience attachments to be installed such as an iPad holder (illustrated), folding picnic table or clothes hanger.



1. Floor mats. Both rubber and velour floor mats (illustrated) are available for your GTC. Both styles have unique fixing points which help keep them firmly in place.

2. Body side protection mouldings. Help protect your GTC against minor knocks and scrapes.

3. Cargo tray. Protect your GTC's load area against messy loads with this sturdy boot liner. Specially designed for a tailored fit, it provides maximum protection yet is easily removed for cleaning.

4. VXR interior styling. Add a touch of style with a set of VXR styling sports pedals.

5. Rear bumper protection film. Protects the rear bumper against minor scratches when loading and unloading.

Further accessories include:

- // Detachable tow bars with 7- or 13-pin connection
- // Smoker Pack
- // Front passenger seat net
- // Load-restraining floor net
- // Alloy wheels
- // Safety Pack
- // Door sill covers
- // Rear parking distance sensors

Trust Vauxhall

Company Car Driver 3 Day Test Drive

Our free* 3 Day Test Drive programme is open to all Company Car Drivers which allows you to choose any model in the current Vauxhall line-up (excluding Cascada, all VXR models and Commercial Vehicles), with insurance cover provided, to give you a meaningful length of time to make an informed decision about your next company car.



To book your free* test drive just log on to vauxhall3dtd.co.uk or call **0330 587 8221****



Fleet Customer Services

Our dedicated support services for fleet decision makers include factory demonstrators and information on whole life costs, company car taxation and finance.

For further information please call **0330 587 8222**.



For more information...

For a brochure on any Vauxhall model (up to a maximum of three per caller) or location of your nearest Vauxhall retailer, please call **0345 600 1500**.

Alternatively, details can be found on our website at vauxhall.co.uk

Join us online:



Scan this QR code with your smartphone for more information. Don't forget to download a QR reader from your app store first.

*The free 3 Day Test Drive programme is open to Company Car Drivers and Fleet Decision Makers. Available for UK Mainland only. Terms and Conditions apply. Full terms and conditions can be found at vauxhallfleet.co.uk/testdrive/index/terms.

**Telephone lines open Monday-Friday 9.00am to 5.00pm excluding Bank Holidays. Calls may be recorded or monitored for quality and/or training purposes.

Privacy Policy – For full details please visit: vauxhall.co.uk/privacy

Vauxhall OnStar privacy details are available at vauxhall.co.uk/onstar

Some feature descriptions in this brochure may refer to, and some illustrations may show, optional equipment not included in the standard delivery. The information contained in this brochure was accurate at the time of going to print. We reserve the right to make changes in design and equipment. The colours printed in the brochure only approximate actual colours. Illustrated optional equipment is available at extra charge. Availability, technical features and equipment provided on our vehicles can vary by model. For precise information on the equipment provided on our vehicles, please contact your local Vauxhall Retailer. As part of Vauxhall's policy of environmental care, this brochure is printed on paper manufactured using Elemental Chlorine Free pulps from specially farmed, sustainable timber resources.

VAUXHALL

vauxhall.co.uk/gtc

LT00151137 ©2017 Vauxhall Motors Limited
Published October 2017 Vauxhall Motors Limited