

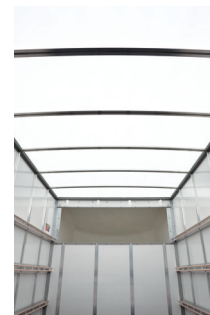
MOVANO Luton Van – Recognised Conversion

European Whole Vehicle Type Approval e11*2007/46*0971*00



The Vauxhall Movano Luton Van from Ingimex has been specifically designed for the transport of dry freight or secure loads. What's more, the extensive use of aluminium construction methods gives the conversion an outstanding payload capacity while the body structure and shutter have been designed to meet the very latest in European design standards.

Loadspace features include a non-slip birch floor and a unique four-tier load restraint system that helps protect the load when secured and allows several load retention methods. The standard rear step and full-height grab handle mean safe and easy access to the load area while a swivel spotlight provides complete illumination. The wide lath rear shutter features a reinforced bottom plank to protect against the movement of unsecured loads and a slam-shut lock system for extra security. Side and bulkhead construction from durable glass-reinforced plastic and no visible fixings mean there's a clean finish for livery application so your vehicle will look great too.



Unique/key selling points

- › 630kg conversion weight for increased payload capacity
- › Volume 18cu.m (estimated excluding Luton head)
- › Wide lath rear shutter door with slam-shut lock
- › Four-tier load restraint system
- › One-piece birch plywood load deck
- › Grab handle and fold out rear step
- › Steel rear frame painted and powder coated for corrosion protection

Typical conversion features

- › Sides and bulkhead are constructed from durable glass-reinforced plastic
- › Integrated, swivelling interior spot lamp
- › Rear mud flaps
- › Anodised aluminium exterior profiles
- › Bolt on/off Luton mould
- › No visible fixings provides clean finish for livery application
- › Steel parts dip e-coated and powder coated or zinc plated to give minimum of 500 hours salt spray resistance.

Conversion options (at extra cost)

- › 500kg tail lift
- › Telescopic load restraint poles

Vauxhall recognised conversions

These conversions have been tested to ensure they meet the technical standards required by General Motors UK Limited.

Movano e11*2007/46*0971*00.

Please note

Typical conversion examples shown. Conversions on other model variants are available please consult the converter. Full specification, option and colour availability details of the Movano range appear in the Movano brochure available from your Vauxhall retailer or Lo-call 0845 600 1500. Alternatively, details can be found on our website at www.vauxhall.co.uk/vans

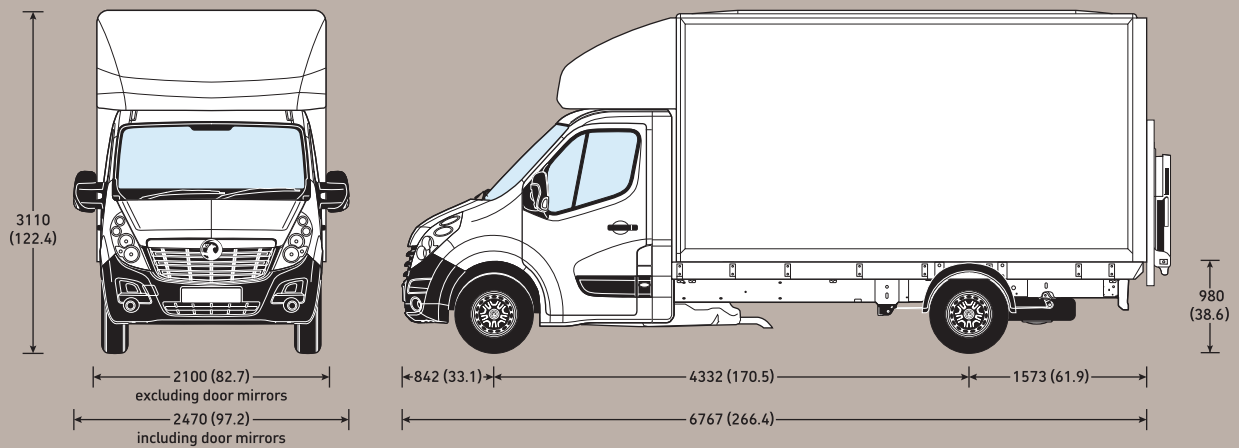


Converter contact details:

For conversion pricing, option and warranty details contact:
Ingimex Limited, Halesfield 19, Telford, Shropshire, TF7 4QT
Email: sales@ingimex.com Website: www.ingimex.com Tel: 01952 585833

Founded in 1972, Ingimex Limited is the UK's largest manufacturer of light commercial vehicle bodies and the only European light commercial vehicle body manufacturer to fully design, test and manufacture products in house. Quality is of the utmost importance to the company and we pride ourselves on the exceptionally high standards of safety, function and finish that we have achieved across our product range.

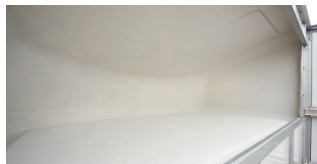
Dimensions mm (inches). Height shown unladen.



Wide lath rear shutter.



Slam-shut feature for rear shutter ease of use.

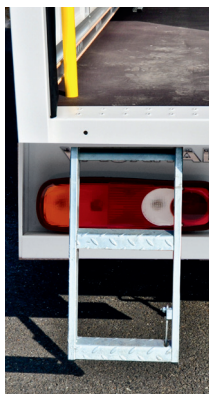


Useful over-cab storage facility.

Load area dimensions mm (inches)

	L3
Maximum length	4119 (162.2)
Maximum width	1951 (76.8)
Maximum height	2120 (83.5)
Loading height	980 (38.6)
Door aperture height	1755 (69.1)
Maximum load volume*	18cu.m

*Estimated excluding Luton head.



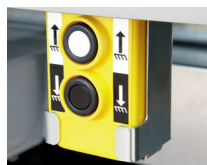
Easy access rear step.



Full-height grab handle with integrated spotlight.



Tail lift operation through internal...



...and external controls.



500kg capacity tail lift is optional at extra cost.



Weights kg for Luton body**

Model	UK plated weights and kerbweights				
	Front axle	Rear axle	GVW	Kerb	Payload
L3 H1 F3500 2.3CDTI 16v	1850	2100	3500	2337	1163
L3 H1 F3500 2.3CDTI 16v with tail lift	1850	2100	3500	2537	963

Please note: **Kerbweight includes conversion body weight, coolant, oil, 90% full fuel tank and spare wheel. It will vary according to the vehicle specification (including options and accessories) with a corresponding variation in payload. **Payload** figure does not allow for the weight of the driver, or any passengers, which should therefore be deducted from the figure shown. **Gross plated weight** (including axle weights) quoted on the vehicle plate must never be exceeded.

Every effort has been made to ensure that the contents of this publication were accurate and up-to-date at the time of publication (October 2013). Vauxhall vehicles are equipped with components manufactured by various General Motors operating units and outside suppliers. The Company reserves the right to alter specifications and withdraw products from sale without notice. Any such alterations will be notified to Vauxhall retailers at the earliest opportunity, please consult your local retailer for the latest information. The specifications detailed within this brochure are not necessarily applicable to alternative models such as Special Editions. Details of any such models will be contained in specific literature or found on the Vauxhall website. Please note that Vauxhall retailers are not the agents of General Motors UK Limited and are not authorised to bind the Company by any specific or implied undertaking or representation. It is advisable to ensure that your motor insurance policy provides adequate cover for additional fitted options and accessories. Please note accessories shown are for illustrative purposes only. All rights reserved. No part of this publication may be reproduced in any form or by any means, without the prior written permission of General Motors UK Limited.

V1 ©2013 General Motors UK Limited Published October 2013 General Motors UK Limited, Luton LU1 3YT



COMMERCIAL VEHICLES
The Wheels of Business

VAUXHALL