

Tigra

2008 Models Edition 2





EVERY STREET'S A CATWALK

With modern lines and undeniable style, Vauxhall Tigra demands your attention. On the move, its genuine poise and visual attitude can't help but make an impression, wherever you go. Roadster or coupé. Tigra Air, Exclusiv or the exciting new Sport Rouge model. It's all about the look.

This brochure covers Tigra Air, Sport Rouge and Exclusiv models only. Some of the vehicles shown include options and accessories available at extra cost. And not all of the features described are available on every model. So please check in the Equipment section for further details. From time to time, we also offer alternative Tigra models such as Special Editions, featured in their own separate literature or found on the Vauxhall website: www.vauxhall.co.uk

Exterior style 4

Interior style 6

Coupé style 8

Roadster style 10

Environmental issues 14

Clever solutions 16

Safety and security 20

Equipment and features 22

Tigra line-up 24

Options and accessories 30

Colours and trims 34

Equipment 38

Technical data 42

THREE HOT MODELS TWO GREAT LOOKS ONE SIMPLE DECISION

Tigra now comes in three great styles – including the new Sport Rouge with its unique red fabric-covered hard top. And every model has two brilliant looks – sporty roadster and stylish coupé. So the only real decision is 'top up or top down'. And that one's easy. Tigra's retractable steel hard top can be raised or lowered in 20 seconds, so you can change your mind as often as you like – and still look fantastic.



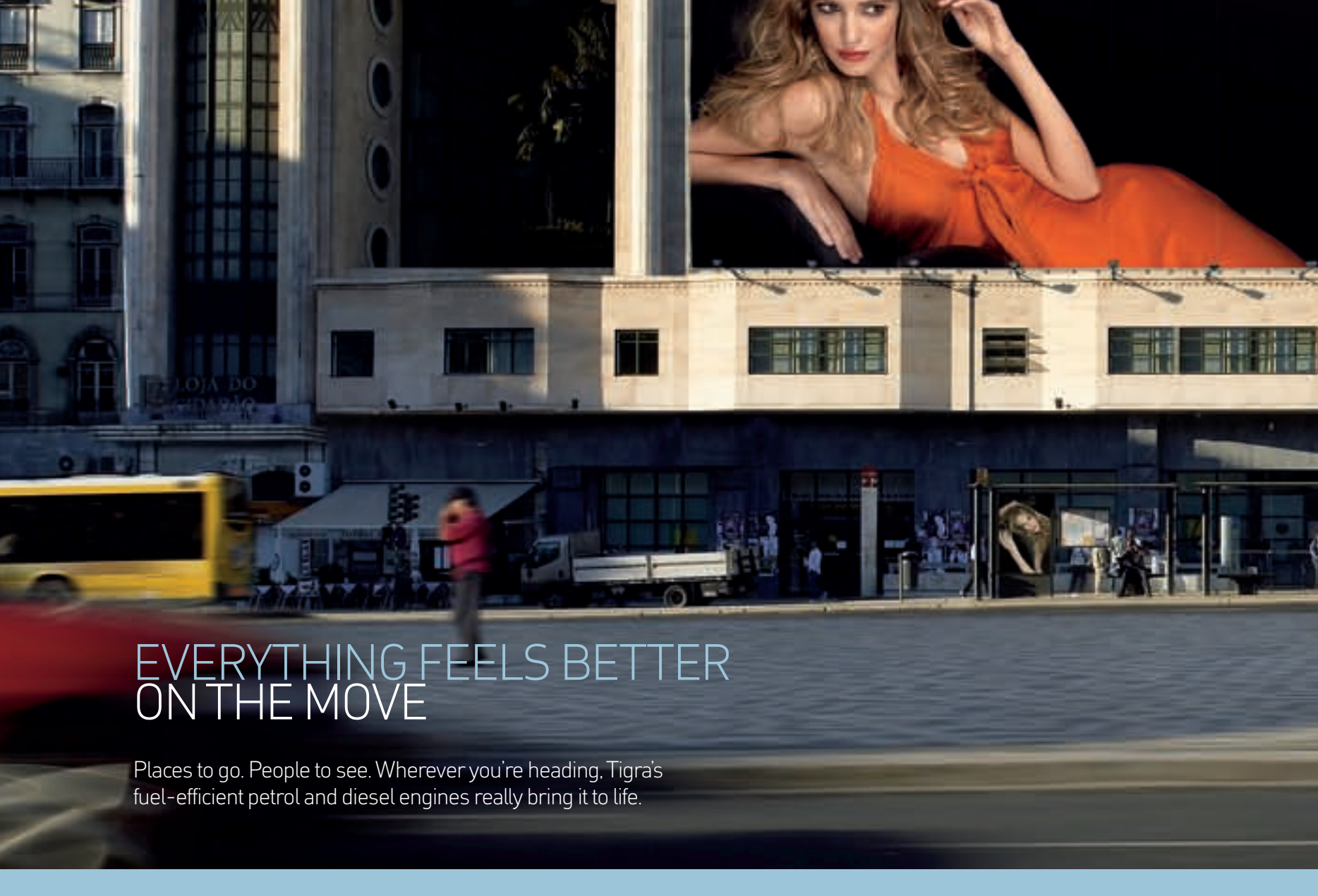


FEELS RIGHT
WORKS GREAT
LOOKS BRILLIANT

Tigra has a spacious, stylish interior where everything feels right, works well and looks brilliant – especially you! There's a tiltable steering column and the sports seats have six-way adjustment – with leather trim standard on the Exclusiv model. The steering wheel has audio remote controls and the roof, windows and heated door mirrors are electrically operated. It all adds up to total control and complete comfort.







EVERYTHING FEELS BETTER ON THE MOVE

Places to go. People to see. Wherever you're heading, Tigrá's fuel-efficient petrol and diesel engines really bring it to life.







CENTRE OF ATTENTION. DON'T YOU JUST LOVE IT?

Top up or top down, Tigra is a great looking car. Look good, feel good.

LOOKING GOOD FEELING GREAT

Ever noticed how the air feels fresher near the sea? And how the sky looks so blue on a mid-summer's day? The world is more vibrant through an open roof.







RESPECT YOUR WORLD

We all share a responsibility to look after our world. And Vauxhall has been at the forefront of green automotive initiatives for many years. Most recently, we are looking at new ways to further reduce vehicle CO₂ emissions and are working on cleaner, more efficient alternative power sources, including zero-emission fuel cell technology.

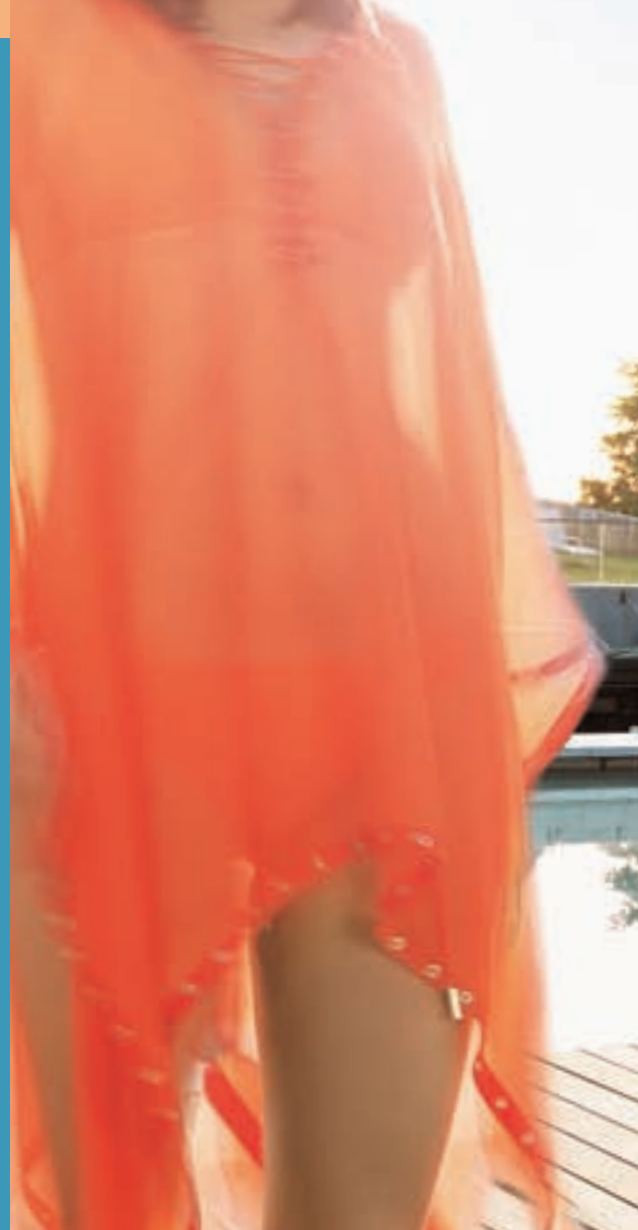
But our commitment to preserving the environment goes even further. We have dramatically reduced manufacturing emissions, for example. Our designers aim to use more recycled materials and improve parts' recyclability wherever possible. And we also offer free and easily accessible, environmentally friendly, end-of-life vehicle disposal through our partners Autogreen Ltd.

That way, we reduce our environmental impact in every phase of every vehicle's life cycle. Because your world is our world, too.



LOOK DEEPER THERE'S MORE TO DISCOVER

Looks get you far, but talent gets you further. Beneath Tigr's cool exterior lies a brilliant chassis, tuned for high stability, impressive grip and superb ride comfort. The speed-sensitive, power-assisted steering and sporty, low profile tyres give you a real sense of control.







WANT TO TRAVEL IN SPACE? LOOK INSIDE.

When the sun is out, we all want roadsters. When it's not, we don't. That's why Tigris caters for both scenarios. And still makes loads of space for plenty of bags and shopping – roof up or down.



◀ ▶ **Loadspace.** Talk about clever. The Tigra power-operated boot lid opens one way when you retract the hard top and another when you want to load your luggage. The boot space is roomy too, providing an incredible 320 litres of loadspace with the roof up and as much as 159 litres when it's lowered.



◀ **Retractable hard top.** Tigra's electrically retractable hard top is best appreciated in action. In one smooth, smart movement, your cool coupé becomes a sensational roadster. And it's so easy. Simply press the button. The boot lid opens 'backwards' and the two-piece hard top glides back almost vertically into the body just behind your seat. Want to time it? Just under 20 seconds. And, for safety reasons, you can stop the process at any time by simply taking your finger off the button. If the sun goes in, the same pushbutton operation lifts and seals the roof just as quickly and easily, leaving you completely protected against the weather and far more secure, of course.

▼ **Rear storage area.** As spacious as the boot is, there are still times when it's easier to stash your stuff inside the car. Handy then, that Tigra has another, deep stowage compartment behind the seats, with as much as 53 litres more storage space for travel bags, shopping, you name it.





LOOK AFTER YOURSELF. HERE'S HOW TIGRA CARES.

Here's one roadster that combines high body and chassis integrity with a long list of extensive safety features. The result? A high 4-star EURO NCAP (New Car Assessment Programme) safety rating. Sexy and sensible. That's Tigra.

▼ **Rollover protection.** Tigra is well prepared with a reinforced windscreen surround and extra body strengthening. The high-strength aluminium style hoops just behind the seats provide additional protection in the head area.



▶ **ABS.** Tigra's Anti-lock Braking System (ABS) with Electronic Brakeforce Distribution and Emergency Brake Assist can reduce emergency stopping distances, particularly on slippery roads. It prevents the wheels from locking up and allows drivers to retain steering control in emergency braking situations.

Additional safety features. For maximum protection, Tigra has a reinforced passenger cabin with side-impact beams. In a frontal impact, our unique pedal release system helps protect your feet and legs, and 'anti-submarining' seat ramps help prevent you sliding underneath the lap belt.

High security. A remote control ultrasonic alarm system is just part of a long list of available security features. Others include an engine deadlock immobiliser, remote control central deadlocking and door-to-door illumination, which helps you find your way from an unlit garage or car park.



▶ **ESP and traction control.** The optional Electronic Stability Programme (ESP) helps you maintain control during adverse or emergency conditions. If the car begins to slide, ESP gently applies corrective braking to the appropriate road wheel to help you regain control. Traction control helps prevent wheelspin during acceleration. Page 38 of the Equipment section explains things in more detail.

▶ **Airbags.** Tigra features driver, passenger and twin side-impact airbags. These are backed by a body-lock seatbelt pretensioner system, which tightens the seatbelt during the early stages of an accident, and seatbelt force limiters, which reduce the force in the chest area, if necessary, in the event of a frontal collision.





◀ **Audio and Sat Nav.** The CD 30 MP3 stereo radio/CD player (standard on Sport Rouge and Exclusiv – optional on Tigras Air) features an 'auxiliary-in' connection so you can now play MP3 tracks direct from your own MP3 player as well as from a CD. The optional CD 70 system adds even more functionality, including satellite navigation with a monochromatic graphic information display. The optional CDC 40 unit features a radio/CD player with a six-disc CD autochanger and a monochromatic graphic information display. Steering wheel mounted audio controls are, of course, standard on all Tigras models.

LOOKING TO RELAX? TIGRA'S GOT IT COVERED.

Quality audio, leather seat trim, Sat Nav and air conditioning. Tigras is available with some brilliant interior features, all aimed at making life easier, wherever you want to go. Take a closer look.



◀ **Air conditioning.** Standard on Tigrā Exclusiv and optional on all other Tigrā models, air conditioning provides chilled air on hot days, faster demisting on damp days and a more pleasant driving environment the whole year round.



◀ **Electric seat heating.** Making life that little more comfortable on cold wintry mornings, electrically heated sports seats are standard on Tigrā Exclusiv and available as part of the optional Leather Pack on Tigrā Sport Rouge. The Smoker Pack illustrated is an extra cost retailer-fit accessory.

▼ **Leather trim.** Now we're talking luxury. Choose Tigrā Exclusiv, or the optional Leather Pack on Sport Rouge models, and you're into the upmarket look and feel of charcoal leather seat facings and head restraints. Exclusiv models also feature unique silver stitching. Both leather seat designs include electric heating for the sports seats.



▲ **Cruise control.** Optional as part of the Plus Pack, along with a multi-function trip computer, this practical, easy-to-use feature allows you to maintain a steady speed without keeping your foot on the throttle. So it's more comfortable on long journeys and easier to keep to speed limits too.



◀ **Windbreak.** However fast you're moving, you can always look as good as you feel with the Tigrā windbreak, which significantly reduces wind buffeting from behind. Standard on Tigrā Exclusiv and Sport Rouge, it's also optional on Air models as part of the Travel Pack, together with a retaining net for the storage area behind the seats.

CHOOSE YOUR NEW LOOK

Nothing is difficult with Tigrá, except deciding which one to choose. Tigrá Air, top-of-the-range Exclusiv or the new eye-catching Tigrá Sport Rouge – the hard top with a soft top effect. Whichever one you go for, people are going to notice. Tigrá's that sort of car.





TIGRA AIR

Tigra is all about turning heads – without costing the earth. All versions come with the electrically retractable hard top, power-operated boot lid and excellent standard equipment.

Standard features include:

- Electrically operated retractable hard top and targa roof bar in body colour
- Driver's and passenger's front and side-impact airbags
- Anti-lock Braking System (ABS)
- Matt aluminium style hoops behind seats
- 15-inch alloy wheels (steel spare)
- Electrically operated windows
- Electrically adjustable/heated door mirrors
- Sports seats with height adjustment
- Leather-covered steering wheel
- Remote control central deadlocking
- Stereo radio/CD player
- Steering wheel mounted audio controls
- Tilttable steering column
- Sporty suspension
- Dark metallic-effect centre console

Engine availability	Insurance groups (ABI)	
	20	50
1.4i 16v	9D	17D
1.4i 16v Easytronic	9D	17D
1.3CDTi 16v	8D	15D

Please note: Insurance groups relate to both the previous 20 group rating and the new 50 group rating.



Air conditioning and CD 30 MP3 audio unit are optional at extra cost.

TIGRA SPORT ROUGE

For people who want a little something extra: Tigra Sport Rouge, featuring enhanced equipment levels, unique cabin details and a stylish red fabric-covered hard top and targa roof bar.

Standard features over and above Tigra Air include:

- Hard top with Bordeaux Red soft top effect
- 16-inch alloy wheels (steel spare)
- Front fog lights
- Stainless steel exhaust tailpipe (1.8i 16v only)
- Aluminium sports pedals
- Windbreak
- White sports instruments
- Remote control alarm
- Stereo radio/CD with MP3 format
- Auxiliary-in socket
- Two-tone facia, steering wheel and door trim
- Sports leather-covered steering wheel
- Alloy-effect 'boomerangs' on lower centre console
- Alloy-effect gear knob insert, door mouldings and centre console trim

Engine availability

Insurance groups (ABI)

	20	50
--	----	----

1.4i 16v	10D	19D
1.8i 16v	13D	26D
1.3CDTi 16v	9D	18D

Please note: Insurance groups relate to both the previous 20 group rating and the new 50 group rating.



Two-coat metallic paint is optional at extra cost.

TIGRA EXCLUSIV

Make a statement in the ultimate Tigra. Exclusiv comes with all those essential style goodies – charcoal leather with silver stitching, air conditioning and 17-inch alloys with a unique finish.

Standard features over and above Tigra Air include:

- Windbreak
- Charcoal leather seat facings and head restraints
- Electrically heated sports seats
- Air conditioning
- Stereo radio/CD with MP3 format
- Auxiliary-in socket
- 17-inch five-spoke alloy wheels with anthracite inner*
- Remote control alarm
- White sports instruments
- Aluminium sports pedals (manual models only)
- Front fog lights
- Stainless steel exhaust tailpipe (1.8i 16v only)
- Sports leather-covered steering wheel

Engine availability	Insurance groups (ABI)	
	20	50
1.4i 16v	10D	19D
1.4i 16v Easytronic	10D	19D
1.8i 16v	13D	26D

**Emergency tyre inflation kit is supplied in lieu of spare wheel.*

Please note: Insurance groups relate to both the previous 20 group rating and the new 50 group rating.



◀ **Air conditioning** is standard on Exclusiv models.



▲ **Electrically heated sports seats.** On Exclusiv models the leather sports seats are also electrically heated. The Smoker Pack illustrated is an extra cost retailer-fit accessory.





Tigra Exclusiv

OPTIONS AND ACCESSORIES

Vauxhall options and accessories are all about choice – selecting your new car, then personalising it to suit yourself. There's a choice of factory-fitted options and a huge range of retailer-fit accessories. You can also choose styling products from the VXR range as well as auto design specialist Irmischer International. You'll find further information on the following pages or just ask your Vauxhall retailer for more details.



VXR Styling

Inspired by the hugely successful VXRRacing team, Vauxhall VXR styling products come with all the same experience, knowledge, and passion for style and performance. They put the accent firmly on quality and exclusivity, with a winning edge. And they add flair, personality and excitement to every Tigra model. VXR styling products are available as factory-fit option packs or accessories fitted by your Vauxhall retailer. Please refer to the Vauxhall Car and Accessory Price Guide for availability details of the full Vauxhall VXR range.

◀ **VXR Styling Pack One.** Tigra Exclusiv model illustrated features VXR Styling Pack One (consisting of front lower spoiler, side sills, rear lower skirt and boot lip spoiler). The items are also available separately as retailer-fit accessories.



Irmscher Styling

Developed in conjunction with auto design specialists Irmscher International, Tigra styling accessories perfectly complement the vehicle's lines, as well as being manufactured to the same exacting standards as the car itself. For availability details of these features – please refer to the Vauxhall Car and Accessory Price Guide.



◀ ▲ **Irmscher Styling Pack.** Treat your Tigra to the Irmscher Styling Pack which consists of body-colour front lower skirt extensions, rear wing spoiler and sports silencer with twin round tailpipes and an Irmscher chrome-effect badge and keyring. Vehicle illustrated additionally features stainless steel door handle covers, carbon-effect panels for the rear bumper and 17-inch Sport Star alloy wheels (left) or 17-inch Delta alloy wheels (above). All available as extra-cost retailer-fit accessories.

Available individually or in special packs at great prices, Tigra options can make life better in so many ways. Alloy wheels, infotainment upgrades, air conditioning – there’s a huge range to choose from. Simply make your choice when you order your new car and it’ll be fitted at the factory for you. You’ll find further information on availability in the Equipment section or you can ask your Vauxhall retailer.



▲ ▼ Travel Pack (standard on Sport Rouge and Exclusiv).

- Windbreak
- Retaining net for storage area behind seats

Individual options:

- Five-speed Easytronic transmission
- Air conditioning (standard on Exclusiv)
- Electronic Stability Programme (ESP)
- Automatic seat occupancy detection for passenger’s airbags
- Rear parking distance sensor
- 17-inch five-spoke alloy wheels with 205/45 R 17 tyres (standard on Exclusiv with Anthracite inner)
- Remote control ultrasonic security alarm system (standard on Sport Rouge and Exclusiv)
- CD 30 stereo radio/CD with MP3 format (standard on Sport Rouge and Exclusiv) and auxiliary-in socket
- CDC 40 stereo radio/integral six-disc CD autochanger with MP3 format



▲ Leather Pack (Sport Rouge only).

- Leather seat facings and head restraints
- Electrically heated sports seats

▼ CD 70 stereo radio/CD with MP3 format/auxiliary-in socket/satellite navigation with monochromatic graphic information display.



Plus Pack.

- Cruise control
- Multi-function trip computer
- Graphic information display



Vauxhall accessories are the right choice for your Tigrá. Whatever you're into, there's certain to be a Vauxhall accessory with your name on it, all fitted by trained Vauxhall professionals. We've only featured a small selection of what's available here. The Vauxhall Car Accessory Brochure and Car and Accessory Price Guide give further details or check out our website at www.vauxhall-accessories.com



▼ Protection Pack.

- Velour mats
- Windbreak

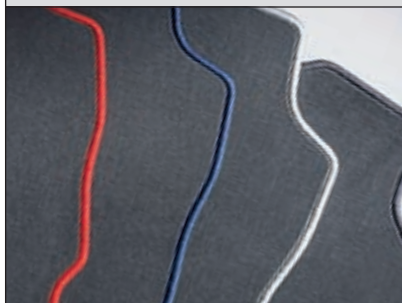
▲ **Mobile leather compartment organiser** makes the space behind the front seats even more useful. Easily put in or taken out of the compartment, this smart, high-quality organiser includes a removable interior divider.



▼ Travel Pack.

- First aid kit
- Warning triangle
- Hi-visibility vest

▲ **Rear parking distance sensors.** This invaluable parking aid is mounted within the Tigrá rear number plate area. Activated automatically when reverse gear is selected, it beeps as you approach an obstruction changing to a continuous tone when it is approximately 300mm away.



▶ **Headlight protectors.** They're fitted in moments, yet provide real protection for your headlights against chips and cracks. Tailor-made for your Tigrá, they're available in a standard format and carbon fibre-effect.



Exterior colours

▶ Flame Red – solid
Air and Exclusiv



▶ Sunny Melon – solid
Air



▶ Black Sapphire – pearlescent
Air and Exclusiv



▶ Metro Blue – metallic
Air



▶ Iceberg Blue – pearlescent
Air and Exclusiv



▶ Star Silver – metallic
Air and Exclusiv

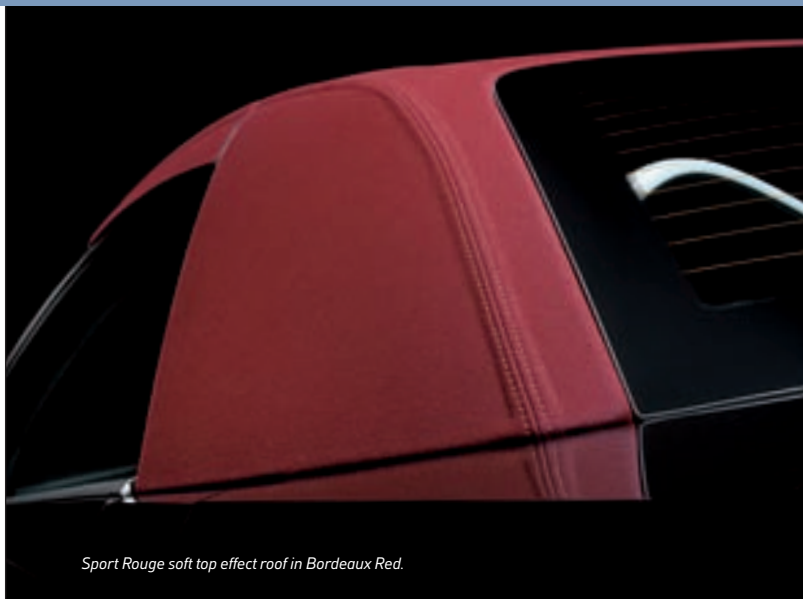


▶ Antigua – pearlescent
Air and Exclusiv



▶ Spearmint Silver – metallic
Air and Exclusiv





Sport Rouge soft top effect roof in Bordeaux Red.

Gorgeous exterior colours; vibrant solids and exciting two-coat metallics and pearlescent shades. Colour co-ordinated steel roofs with targa roof bars that either match or contrast. Tigra has everything you need to create your own designer label.

Due to the limitations of the printing process the colours reproduced may vary slightly from the actual paint colour. As a result they should be used as a guide only. Your Vauxhall retailer has a comprehensive display of all our paint samples.

▶ Flame Red – solid
Sport Rouge



▶ Star Silver – metallic
Sport Rouge



▶ Metro Blue – metallic
Sport Rouge

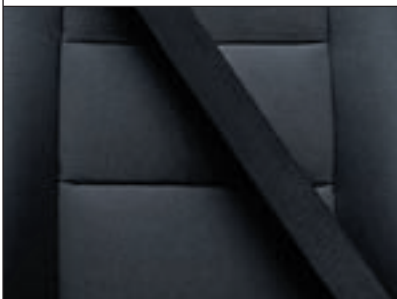


▶ Black Sapphire – pearlescent
Sport Rouge

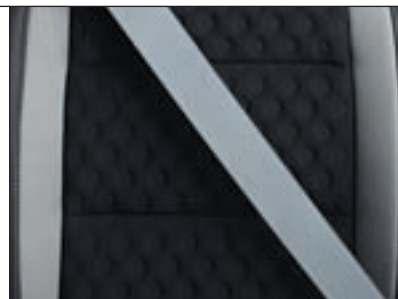


Tigra's interior trims are designed to fully complement your choice of exterior colour combination. Whichever model you choose.

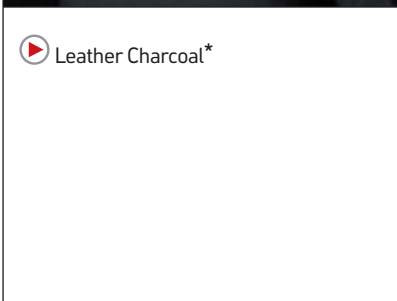
Due to the limitations of the printing process the colours reproduced may vary slightly from the actual trim material. As a result they should be used as a guide only. Your Vauxhall retailer has a comprehensive display of all our trim swatches.



▶ Splice cloth Charcoal



▶ Oxygen cloth/
Morrocana Silver/Charcoal



▶ Leather Charcoal*



▶ Leather trim with silver stitching



Exterior colours

Model, trim name and trim colour

	Tigra Air		Tigra Sport Rouge		Tigra Exclusiv	
	Splice cloth	Targa roof bar	Oxygen cloth/Morrocana	Leather*	Leather	Targa roof bar
Solid						
Flame Red	Charcoal	Body colour	Silver/Charcoal	Charcoal	Charcoal with silver stitching	Matt Star Silver or body colour*
Sunny Melon	Charcoal	Body colour	-	-	-	-
Two-coat metallic*						
Star Silver	Charcoal	Body colour	Silver/Charcoal	Charcoal	Charcoal with silver stitching	Body colour
Spearmint Silver	Charcoal	Body colour	-	-	Charcoal with silver stitching	Matt Star Silver or body colour*
Metro Blue	Charcoal	Body colour	Silver/Charcoal	Charcoal	-	-
Two-coat pearlescent*						
Black Sapphire	Charcoal	Body colour	Silver/Charcoal	Charcoal	Charcoal with silver stitching	Matt Star Silver or body colour*
Antigua	Charcoal	Body colour	-	-	Charcoal with silver stitching	Matt Star Silver or body colour*
Iceberg Blue	Charcoal	Body colour	-	-	Charcoal with silver stitching	Matt Star Silver or body colour*

-- = Exterior colour listed is not available on this model. * = Optional at extra cost



Matt aluminium style hoops rollover protection.

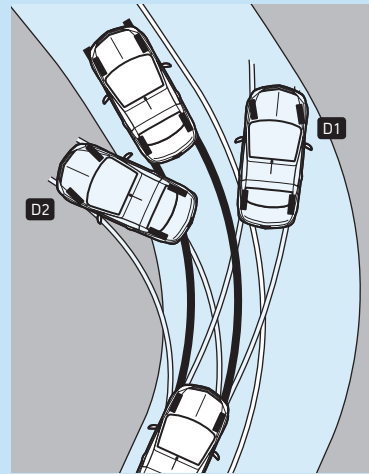
Safety

Standard features • Driver's airbag • Passenger's airbag • Side-impact airbags • Pedal release system – Reduces potential injury to the driver's legs and feet during a severe frontal impact • Laminated windscreen • Reinforced passenger safety cell • Deformation zones front and rear • Fuel tank located ahead of rear wheels • Side-impact protection beams • Integral protective side door padding • Reinforced windscreen surround • Matt aluminium style hoops rollover protection • Anti-lock Braking System (ABS) • Body-lock seatbelt pretensioner system – Tightens the seatbelt during the early stages of a frontal impact • Seatbelt force limiters – Reduce potential upper body injuries during a frontal impact • Anti-submarining ramps in seats – Help prevent occupants sliding underneath the lap belt during a collision • Height-adjustable head restraints

Additional features

Electronic Stability Programme (ESP) with traction control
Automatic seat occupancy detection for passenger's airbags

	Air	Sport Rouge	Exclusiv
Electronic Stability Programme (ESP) with traction control	○	○	○
Automatic seat occupancy detection for passenger's airbags	○	○	○



Electronic Stability Programme (ESP)

ESP helps the driver maintain full control of the vehicle during adverse or emergency conditions. ESP technology is designed to monitor both the front and rear of the car independently and compare their respective directions of travel with the driver's steering wheel input. If either the front **D1** (understeer) or rear **D2** (oversteer) of the vehicle begins to slide, ESP gently applies corrective braking to the appropriate individual road wheel, controlling the slide and maintaining safe progress.

D1 When a vehicle is understeering excessively, it displays an unwillingness to change direction as the outside front tyre has become overloaded and begun to slide. In this instance, ESP will apply a braking force to the inside rear wheel, slowing it down and increasing the vehicle's yaw angle to help the front wheels change direction.

D2 During the more unusual oversteering situation the vehicle's yaw angle is excessive due to the outside rear tyre having lost grip. Although countersteering is an effective solution, it is often difficult to judge how much opposite lock to apply. ESP, however, will apply the correct braking force to the outside front wheel, which will reduce the yaw angle and bring the vehicle back under control.

Security

- Standard features** • Remote control two-stage central locking with security deadlocks • Visible Vehicle Identification Number (VIN) • 'Key left in ignition' audible warning • Electronic engine deadlock immobiliser • Lockable glovebox • Electronic theft protection for audio equipment • Door-to-door illumination – Keeps the headlights and rear lights on for 30 seconds after the car doors are locked • Locking wheel bolts

Additional feature	Air	Sport Rouge	Exclusiv
Remote control ultrasonic security alarm system	○	●	●

Facia, instruments and controls

- Standard features** • Display panel showing time, date, audio information and outside air temperature (with ice warning function) • Digital clock with automatic RDS time adjustment • Rev counter • Trip odometer • Tiltable steering column

Additional features	Air	Sport Rouge	Exclusiv
Cruise control ¹	□	□	□
Multi-function trip computer ¹	□	□	□
Leather-covered steering wheel	●		
Leather-covered sports steering wheel		●	
Leather-covered sports steering wheel with silver stitching			●
White sports instruments		●	●

Audio equipment

Features	Air	Sport Rouge	Exclusiv
CD 30 stereo radio/CD player • AM/FM stereo radio with 24 station presets • RDS with Traffic Programme • CD player • Remote display • 20 watts per channel output • 4 speakers	●		
CD 30 MP3 stereo radio/CD player with MP3 format • AM/FM stereo radio with 24 station presets • RDS with Traffic Programme • CD player with MP3 format • Auxiliary-in socket • Remote display • 20 watts per channel output • 4 speakers	○	●	●
CDC 40 stereo radio/CD autochanger (deletes auxiliary-in socket) • AM/FM stereo radio with 36 station presets • RDS with Traffic Programme • Integral six-disc CD autochanger • Remote monochromatic graphic information display • 20 watts per channel output • 4 speakers	○	○	○
CD 70 stereo radio/CD player with MP3 format/satellite navigation • AM/FM stereo radio with 40 station presets • RDS with Traffic Programme • CD player with MP3 format • Satellite navigation system • Auxiliary-in socket • Remote monochromatic graphic information display • 20 watts per channel output • 4 speakers	○	○	○
Steering wheel mounted audio controls	●	●	●
Radio aerial mounted on windscreen surround	●	●	●



Leather-covered steering wheel.



Graphic information display.

- = Standard equipment
- = Optional at extra cost
- = Only available as part of an extra-cost option pack (see page 41 for details).

¹ = Not available on 1.3CDTi 16v models. Please note, this pack changes the functionality of the steering wheel mounted audio controls.



Sports seats (Sport Rouge model illustrated).



Alloy-effect gear knob insert.



Optional 17-inch alloy wheel.

Heating and ventilation

Standard features • Air blend heater with four-speed fan and illuminated controls • Interior pollen filter • Side window demist vents and four adjustable face-level air vents

Additional feature	Air	Sport Rouge	Exclusiv
Air conditioning and air recirculation facility	○	○	●

Seating and upholstery

Features	Air	Sport Rouge	Exclusiv
Driver's and passenger's seat height adjusters	●	●	●
Sports seats	●	●	●
Leather seat facings and leather-covered head restraints		□	
Leather seat facings with silver stitching and leather-covered head restraints			●
Electrically heated sports seats		□	●

Additional interior features

Standard features • Dipping rear-view mirror • Twin sunvisors • Centre console with drinks holder • Electrical accessory socket • Fade up/fade down courtesy light • Fully carpeted passenger compartment • Alloy-effect trim on instrument surrounds • Chrome-effect trim on interior door handles • Chrome-effect surrounds on door-mounted speakers • Storage area behind seats

Additional features	Air	Sport Rouge	Exclusiv
Retaining net for storage area behind seats	□	●	●
Chrome-effect trim on gear knob and handbrake button	●		
Dark metallic-effect trim on centre console	●		
Dark metallic-effect mouldings on doors	●		
Alloy-effect trim on centre console and handbrake lever grip		●	●
Alloy-effect gear knob insert and mouldings on doors		●	●
Alloy-effect 'boomerangs' on lower centre console		●	●
Light grey trim on lower door panels, lower facia panels and steering wheel (not with optional Leather Pack)		●	
Platinum-coloured seatbelts (not with optional Leather Pack)		●	
Aluminium pedals (manual models only)		●	●
Carpet mats with charcoal surround			●

Wheels and tyres

Features	Air	Sport Rouge	Exclusiv
15-inch alloy wheels (steel spare) with 185/60 R 15 low profile tyres	●		
16-inch alloy wheels (steel spare) with 205/50 R 16 ultra-low profile tyres		●	
17-inch five-spoke alloy wheels with 205/45 R 17 ultra-low profile tyres ²	○	○	
17-inch five-spoke alloy wheels with anthracite inner and 205/45 R 17 ultra-low profile tyres ²			●

Mechanical

Standard features • Five-speed close-ratio manual gearbox • Electric power-assisted steering • Gas-pressure dampers
• Front anti-roll bar

Additional features

	Air	Sport Rouge	Exclusiv
Easytronic five-speed transmission with sequential manual gearshift or automatic mode (1.4i 16v model only)	○		○
Sports chassis (1.8i 16v model only)		●	●

Exterior protection and styling

Standard features • Body-colour bumpers, door mirrors and door handles • Matt aluminium style hoops behind seats
• Chrome-effect moulding in rear bumper

Additional features

	Air	Sport Rouge	Exclusiv
Targa roof bar in body colour	●		○ ³
Targa roof and roof bar in Bordeaux Red soft top-effect		●	
Targa roof bar in Matt Star Silver			● ⁴
Stainless steel exhaust tailpipe (1.8i 16v only)		●	●

Exterior and convenience features

Standard features • Dual Ellipsoidal (DE) headlights • Hazard warning lights and side repeat indicators • Lights-on audible warning
• Electric headlight beam levelling • Centre brake light • Twin reversing lights • Rear fog light • Tinted glass • Scratch-resistant glass heated rear window • Foldable electrically adjustable/heated door mirrors (wide-angle on driver's side) • Twin-jet windscreen washer nozzles • Two-speed windscreen wipers • Intermittent facility for windscreen wipers • Electrically operated windows
• Electrically operated boot lid mechanism • Folding key

Additional features

	Air	Sport Rouge	Exclusiv
Electrically retractable hard top	●	●	●
Windbreak	□	●	●
Front fog lights		●	●
Rear parking distance sensors	○	○	○
Two-coat metallic or pearlescent paint	○	○	○

Option packs

	Air	Sport Rouge	Exclusiv
VXR Styling Pack One • Body-colour front lower spoiler/side sills/rear lower skirt and boot lip spoiler	○	○	○
Leather Pack • Leather seat facings and head restraints • Electrically heated sports seats		○	●
Travel Pack • Windbreak • Retaining net for storage area behind seats	○	●	●
Plus Pack ¹ • Cruise control • Multi-function trip computer • Graphic information display	○	○	○



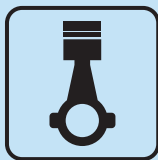
Control pad in driver's door armrest.



Windbreak (as part of Travel Pack).

● = Standard equipment.
○ = Optional at extra cost.
□ = Only available as part of an extra-cost option pack.

1 = Not available on 1.3CDTi 16v models. Please note, this pack changes the functionality of the steering wheel mounted audio controls.
2 = The steel spare wheel is replaced by an emergency tyre inflation kit to effect a temporary 'get you home' repair.
3 = Standard with Star Silver two-coat metallic paint.
4 = Not available with Star Silver two-coat metallic paint.



125PS

1.8i 16v engine gives punchy performance



72.4mpg

1.3CDTi 16v engine is super-economical

Engines

	1.4i 16v Twinport ECOTEC-4	1.8i 16v ECOTEC-4	1.3CDTi 16v ECOTEC-4
Fuel type	Petrol	Petrol	Diesel
Capacity	1364cc	1796cc	1248cc
Maximum power	90PS (66kW) @ 5600rpm	125PS (92kW) @ 6000rpm	70PS (51kW) @ 4000rpm
Maximum torque	125Nm (92 lb.ft.) @ 4000rpm	165Nm (122 lb.ft.) @ 4600rpm	170Nm (125 lb.ft.) @ 1750-2500rpm
Configuration	4 cylinders, 4 valves per cylinder, double overhead camshafts		
Fuel/induction system	Naturally aspirated with vacuum-controlled Twinport inlet ports Multi-point sequential electronic fuel injection	Naturally aspirated. Multi-point sequential electronic fuel injection	Turbocharger with intercooler and common rail fuel injection
Service interval	20,000 miles or 1 year (whichever occurs sooner)		
Benefit in kind company car taxation – 2008/09 tax year			
Manual/Easytronic	17%/16%	23%	18%

Performance, fuel economy and emissions

Model	Performance (manufacturer's figures)		Fuel economy mpg (litres/100km)			CO ₂ emissions (g/km)
	Maximum speed (mph)	Acceleration 0-62mph (secs)	Urban driving	Extra-urban driving	Combined figure	
Manual						
1.4i 16v	112	12.4	34.9 (8.1)	56.5 (5.0)	46.3 (6.1)	146
1.8i 16v	127	9.4	27.2 (10.4)	48.7 (5.8)	37.7 (7.5)	179
1.3CDTi 16v	104	15.5	48.7 (5.8)	72.4 (3.9)	61.4 (4.6)	124
Easytronic						
1.4i 16v	111	13.4	35.3 (8.0)	57.6 (4.9)	47.1 (6.0)	144

The fuel consumption figures shown comply with EC directive 1999/100 to provide a realistic indication of fuel consumption by taking into account everyday driving conditions, such as cold starts, acceleration and braking. These figures take account of the vehicles kerbweight, ascertained in accordance with the above regulation. **Important:** the results given relate to the particular car tested. Driving style, road and traffic conditions, vehicle mileage and standard of maintenance may also affect fuel consumption; therefore the results do not express or imply any guarantee of fuel consumption attainable.

Weights (kg)

Model	Kerbweight*	Gross vehicle weight
1.4i 16v	1160	1450
1.8i 16v	1190	1480
1.3CDTi 16v	1203	1510

Please note: For vehicles with air conditioning 25kg must be added to both kerbweight and gross vehicle weight. **Gross vehicle weight** is the total permissible weight of the vehicle including passengers and their luggage. To determine total carrying capacity, deduct kerbweight from gross vehicle weight. * = Excluding driver.

Vauxhall Assistance and warranties**

- A one-year unlimited mileage manufacturer's warranty
- Second and third year no-fee customer option warranty up to 60,000 miles (from first registration)
- Vauxhall Assistance for 12 months from first registration
- Six years' body panel anti-perforation warranty

** = Warranty is only available on vehicles sourced from Vauxhall Motors Ltd. Terms and conditions apply – please see your Vauxhall retailer for details.

Optional transmission

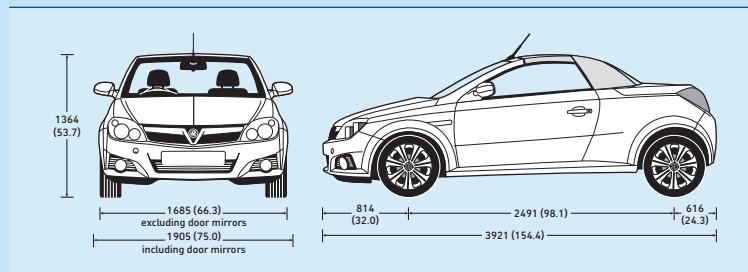
Five-speed Easytronic transmission:

Available at extra cost on 1.4i 16v Air and Exclusiv models. Easytronic transmission is a five-speed manual gearbox with a fully automatic mode. In manual mode, you simply push the lever forward or back to shift gears up or down sequentially. The fascia display tells you what gear you're in – 1 to 5, N for Neutral or A for Auto. Switch to fully automatic mode and it has many of the features of a regular automatic including a kickdown function. There's no clutch pedal so you can drive it on an automatic-only driving licence. Easytronic also comes with a winter mode, which selects second gear for standing starts in slippery conditions.

Body

- Aerodynamic drag co-efficient: Cd 0.34

Exterior dimensions millimetres (inches)



Steering

- Electric power-assisted rack and pinion
- Turning circle (kerb-to-kerb): 10.75m (35.3ft)
- Turns lock-to-lock: 2.7

Brakes

- Anti-lock Braking System (ABS) with Electronic Brakeforce Distribution (EBD) standard on all models
- Dual circuit, diagonally split, servo-assisted system
- Asbestos-free friction material
- Plastic-coated brake pipes

1.4i 16v/1.3CDTi 16v

Front ventilated discs: 260mm diameter
Rear drums: 200mm diameter

1.8i 16v

Front ventilated discs: 260mm diameter
Rear discs: 240mm diameter

Fuel tank capacity

- 45 litres (9.9 gallons)

Luggage capacities

ECIE method	litres (cu.ft)
Roof up†	320 (11.3)
Roof down†	159 (5.6)
Storage area behind seats	53 (1.9)

† = Exclusiv models and Air/Sport Rouge models with optional 17-inch wheels have an additional 8 litres luggage capacity due to the spare wheel being replaced by an emergency tyre repair kit.

Suspension

Front: Independent, MacPherson struts with gas-pressure damper cartridge and coil springs. Anti-roll bar.

Rear: Torsion tube with compound links, progressive-rate double conical mini-block springs and gas-pressure dampers.

- 1.8i 16v Sport Rouge and Exclusiv models feature a sports chassis



Storage area behind seats (shown with accessory holdall).



Luggage area with roof up.



Easytronic transmission.

Trust Vauxhall

Protecting the environment

Vauxhall's commitment to the environment is demonstrated by our products' many environmental awards, won both through the use of more recycled materials and by becoming cleaner and more efficient. For information on Vauxhall's efforts to achieve an environmentally sustainable future, see www.vauxhall.co.uk/recycling

Fleet Customer Services

Our dedicated support services for fleet managers includes factory demonstrators, a three-day test drive programme and information on whole life costs, company car taxation and finance. For further information please call **0870 010 0651**.

Buying your car

GMAC offers one of the most comprehensive and competitive ranges of financing plans in the UK. Contact your local Vauxhall retailer for details or call the GMAC customer service centre on **0845 712 3444**.

Sureguard protection

Sureguard Assistance offers the benefits of Vauxhall Assistance for three years from first registration, while Sureguard Warranty also provides a parts and labour warranty for high-mileage or long-term owners. For details contact your local Vauxhall retailer or call **0870 752 7020**.

Specialist Mobility advice

Motability accredited Vauxhall retailers can provide special mobility help and advice. Blue badge holders are entitled to very favourable discounts on new vehicles. Contact your local Motability accredited Vauxhall retailer or **Freefone 0800 731 5267**.

Servicing and maintenance

The best way to maximise the performance and reliability of your Vauxhall is to have all routine servicing and maintenance carried out at one of around 400 Vauxhall retailers. To find your nearest retailer call **0845 600 1500**.

In the event of an accident...

Vauxhall Accident Support helps keep you mobile following an accident. Benefits include scene-of-accident advice, message service, assistance with claims and vehicle recovery. For further details call **0800 010 304**.

Vauxhall Insurance

Available for new and used Vauxhalls, a Vauxhall Insurance policy offers a unique package designed specifically for Vauxhall drivers. For a highly competitive quotation, call **0870 024 0240** or visit our website at www.vauxhall.co.uk

For more information...

For a brochure on any Vauxhall model (up to a maximum of three per caller) or location of your nearest Vauxhall retailer please **Lo-call 0845 600 1500**.

Alternatively, details can be found on our website at www.vauxhall.co.uk



- Save up to **£1500*** on a new Vauxhall with The GM Card
- 100 Rebate Points worth **£100** when you use The GM Card for the first time
- Rebate Point saving is on top of any discount or offer negotiated with the Retailer
- Earn 3 Rebate Points (**£3**) for every **£100** you spend

Typical 14.9% APR variable

To apply call **0845 746 2777** or visit www.gmcard.co.uk.



When you have finished with this brochure please recycle it

The GM Platinum Card is issued by HFC Bank Limited and is available to persons aged 18 years or over and resident in the UK (or 21 and over in the Channel Islands) and is subject to status and conditions. Written quotations are available upon request from The GM Platinum Card, PO Box 3615, Birmingham B3 2RU. The typical APR quoted is the rate for new customers. *Rebate Points are earned on purchases using The GM Platinum Card. Rebate Points are not earned on Balance Transfers or Cash Advances. You earn money off a new Vauxhall/Saab by accumulating Rebate Points under the Rebate Points Programme. Vauxhall Motors Ltd is solely responsible for the operation of the Rebate Points Programme, which is subject to the Rebate Points Programme Rules. You can redeem up to 2500 Rebate Points subject to the Model Line Maximum which will vary in amount in relation to different Vauxhall/Saab vehicle model lines and unlimited Partner Points. Rebate Points and unlimited Partner Points are redeemable as discounts on a new Vauxhall/Saab vehicle and must be redeemed four years from the issue date. Rebate Points may not be redeemed by Motability Contract Hire customers. The GM Card is a trading name and style of both HFC Bank Limited and Vauxhall Motors Ltd. HFC Bank registered in England No. 1117305. Registered Office: North Street, Winkfield, Windsor, Berkshire SL4 4TD is authorised and regulated by the Financial Services Authority. **Member HSBC** Group HFC Bank Limited is not a member of the same group of companies as Vauxhall Motors Ltd, Saab GB Limited or GMAC UK plc. Vauxhall Motors Ltd, Registered Office: Griffin House, Osborne Road, Luton, Bedfordshire LU1 3YT. Registered in England number 135767. - CN6/0987.

Every effort has been made to ensure that the contents of this publication were accurate and up-to-date at the time of going to press (March 2008). Vauxhall vehicles are equipped with components manufactured by various General Motors operating units and outside suppliers. The Company reserves the right to alter specifications and withdraw products from sale without notice. Any such alterations will be notified to Vauxhall retailers at the earliest opportunity; please consult your local retailer for the latest information. The specifications detailed within this brochure are not necessarily applicable to alternative models such as Special Editions. Details of any such models will be contained in specific literature or found on the Vauxhall website. Please note that Vauxhall retailers are not the agents of Vauxhall Motors Limited and are not authorised to bind the Company by any specific or implied undertaking or representation. It is advisable to ensure that your motor insurance policy provides adequate cover for additional fitted options and accessories. As part of Vauxhall's policy of environmental care, this brochure is printed on paper manufactured using Elemental Chlorine Free pulps from specially farmed, sustainable timber resources. All rights reserved. No part of this publication may be reproduced in any form or by any means, without the prior written permission of Vauxhall Motors Limited.