

# AGILA

2012 Models Edition 2



Proud Sponsor of Home Nations Football







Agila SE





# flex in the city

Always stylish. Always flexible. Agila could be the best looking, most reliable partner you've ever had. Easy to drive, simple to park and affordable to own. And with five doors too, it's everything you need to make a busy life simple.

*This brochure covers Agila Expression, S and SE models only. Some of the models shown include options and accessories available at extra cost. And not all of the features described are available on every model. From time to time, we also offer alternative Agila models such as Special Editions. So for all current model or equipment details visit the Vauxhall website: [www.vauxhall.co.uk](http://www.vauxhall.co.uk)*

**LIFETIME**  
WARRANTY 100,000 MILE

Please see back cover for more details.

Exterior styling 4

Interior styling 6

Environmental issues 8

Interior features and versatility 10

Engines, safety and security 12

Model line-up 14

Accessories 18

Colours and trims 20

Specification 22

# always stylish

Agila is a totally different kind of car – beautifully practical, yet modern and dynamic with a real sporty edge. So wherever you're going, you'll always arrive in style.













# always on the move

This is where it all happens. The light and spacious Agila interior. With vibrant seat fabrics, great sounds, clever storage ideas, flexible luggage space and room for five, there's no end to what you can get done.







# respect your world

We all share a responsibility to look after our world. That's why Vauxhall has been at the forefront of green automotive initiatives for many years. Of course, we are always looking to reduce vehicle CO<sub>2</sub> emissions and our ecoFLEX models have among the lowest emissions in the UK. Most recently, we have been researching ways of developing new cars that are more efficient than ever before. The Vauxhall Ampera\* is an Extended-Range Electric Vehicle (E-REV) that can drive up to 50 miles on battery power alone and over 300 miles utilising an on-board electric generator system.

But our commitment to preserving the environment goes even further. We have dramatically reduced manufacturing emissions, and our new models use more recycled materials and more recyclable parts than ever before. For more information on Vauxhall's efforts to achieve an environmentally sustainable future, see [www.vauxhall.co.uk/recycling](http://www.vauxhall.co.uk/recycling)

We also offer free and easily accessible, environmentally friendly, end-of-life vehicle disposal through our partners Autogreen Ltd.

That way, we reduce our environmental impact in every phase of every vehicle's life cycle. Because your world is our world, too.

**ecoFLEX**

\*For more information on Vauxhall Ampera please visit [www.vauxhall-ampera.co.uk](http://www.vauxhall-ampera.co.uk)



## Always putting you first

Agila proves that size doesn't matter – it's what you do with it that counts. Like maximising your interior space for people and their luggage. Making you comfortable. And dreaming up clever interior features that help you feel at home.



◀▶▼ **Flexible loadspace.** Fold the Agila rear seats forward to create an impressive 1050 litres of loadspace. S and SE models feature a 60/40 split-folding rear seat and a luggage compartment underfloor storage area.





▶ **Rev counter.** How's this for a bit of style, on S and SE models the rev counter is mounted in a separate pod on top of the fascia directly in the driver's vision.



▶ **Air conditioning.** For chilled air on hot days, faster demisting when it's damp outside, and a more pleasant driving atmosphere throughout the year, air conditioning is a brilliant addition to any car interior. It's standard on Agila SE and optional on S.



▶ **Quality sounds.** If you like your tunes on the move, you won't be disappointed by Agila's CD player with MP3 format/stereo radio. It features 30 station presets, MP3 CD playback, RDS with Traffic Programme and four speakers. On S and SE models it also includes steering wheel mounted audio controls.



▶ **Clever storage.** Agila is packed with clever storage ideas, like a large compartment (with lid) on top of the fascia – with coin holders and space for up to three CDs. Other examples, featured on most models, include spacious door pockets, a seat back map pocket and holders for cups, bottles and sunglasses.



▶ **Seat comfort.** Agila has a high seating position for a great view of the road ahead. And it's easy to get comfortable too, especially on S and SE models with six-way adjustable driver and front passenger seats (including height adjustment) and a tiltable steering column too.



ecoFLEX

Agila's 1.0i 12v ecoFLEX engine clearly demonstrates that environmental awareness can go hand in hand with driving enjoyment and save you money too. The benefit of improved fuel economy speaks for itself but low CO<sub>2</sub> emissions also mean zero Vehicle Excise Duty\* (VED) in the first year and low company car taxation too. Take a look at the table below right for all the info.



**Always ready for action.** Great to drive. Easy to park. Agila is designed to make life simple – in the city or out of town. With five doors, secure roadholding and intelligent safety features, it's the perfect partner for an active lifestyle.

**Lively engines.** Agila's high-tech petrol engines are lively through the gears, big on flexibility and economy, and low on emissions. The lightweight 1.0 litre 12v engine delivers a nippy 68PS, and at 94PS, the 1.2i 16v VVT adds extra zest for acceleration and cruising, while still delivering frugal fuel consumption. In addition both 1.0i 12v and manual 1.2i 16v VVT engines ensure that ecoFLEX models are eligible for zero Vehicle Excise Duty\* (VED) in the first year.





◀ ▶ **Manual and automatic transmissions.** An easy-shifting five-speed manual gearbox is standard on every Agila. And a smooth four-speed automatic is optional with the 1.2i 16v VVT engine – perfect for city traffic and relaxed cruising. Both feature a convenient, high-mounted gear lever.



▼ **Airbags.** Agila safety begins with front and side airbags for the driver and front passenger. And on S and SE models when a child seat is carried, or if the front passenger seat is unoccupied, the passenger airbags can be deactivated with a key operated switch at the end of the fascia.



▲ **Seatbelt reminder.** We know you're careful about safety, but just in case, Agila comes with a driver's seatbelt reminder light on the central instrument cluster.



◀ **Electronic Stability Programme (ESP) with traction control.** This optional system senses when the vehicle is about to slide on a bend and applies corrective braking to the appropriate wheels, correcting the slide and helping you regain control more rapidly. The system also includes traction control helping prevent wheelspin during acceleration on slippery surfaces. However, there are times when it is useful to switch the traction control off – for example, when trying to free a vehicle stuck in icy conditions. This is achieved via a button located adjacent to the steering wheel.

▼ **Security.** Agila features an engine deadlock immobiliser, a remote fuel filler release and an electronic touchpad tailgate handle. S and SE models also come with remote control central deadlocking. Push the key fob button once to open the driver's door – twice to open all the doors and the tailgate.

	Combined fuel economy mpg (litres/100km)	CO <sub>2</sub> emissions (g/km)	VED (2012/13)*		Benefit in kind tax band** (2012/13 tax year)
			First year	Standard	
<b>Petrol</b>					
1.0i 12v ecoFLEX	60.1 (4.7)	109	£0	£20	12%
1.2i 16v VVT ecoFLEX	55.4 (5.1)	118	£0	£30	14%
1.2i 16v VVT automatic	49.6 (5.7)	131	£120	£120	17%

\*Correct at time of publication (April 2012). \*\*Taxation information for guidance only. Please take professional advice on your own tax position.





Choose your **Agila**





**Engine availability**

1.0i 12v ecoFLEX (68PS)

**Insurance group (ABI)**

5E



**EXPRESSION**

**Standard features include:**

- Driver's and front passenger's front and side-impact airbags
- Anti-lock Braking System (ABS)
- Emergency Brake Assist (EBA)
- Electronic engine immobiliser
- Speed-sensitive power-assisted steering
- CD/MP3 CD player/stereo radio (CD 30 MP3)
- Body-colour bumpers
- Tailgate with electronic touchpad release
- Internal release for fuel filler flap
- Tinted glass
- Lights-on audible warning
- 14-inch steel wheels with full-size wheel trims (emergency tyre inflation kit in lieu of spare wheel)
- Height-adjustable front seatbelts and head restraints
- Three inertia-reel lap and diagonal rear seatbelts
- ISOFIX child seat restraint system for outer rear seats (does not include child seat)

## S

**Standard features include:**

- Driver's and front passenger's front and side-impact airbags
- Anti-lock Braking System (ABS)
- Electronic engine immobiliser
- Speed-sensitive power-assisted steering
- CD/MP3 CD player/stereo radio (CD 30 MP3)

**Additional features over and above Expression model:**

- Remote control central deadlocking
- Tilttable steering column
- Steering wheel mounted audio controls
- Multi-function trip computer
- Pod-mounted rev counter
- Electrically operated front windows
- Electrically adjustable/heated body-colour door mirrors
- Body-colour exterior door handles
- Colour-keyed door trim insert panels
- Colour-keyed (blue) fascia panel with 'Atlanta Blue' Melt seat trim
- Colour-keyed (lemon) centre console surround with 'Lemon Tree' Melt seat trim
- Silver-effect interior door handles, gear knob insert and handbrake button
- Driver's and front passenger's seat height adjusters
- 60/40 split-folding rear seat back
- DualFloor luggage compartment
- Front fog lights
- 15-inch steel wheels with full-size wheel trims (emergency tyre inflation kit in lieu of spare wheel)



Engine availability	Insurance groups (ABI)
1.0i 12v ecoFLEX (68PS)	6E
1.2i 16v VVT (94PS)	9E
1.2i 16v VVT automatic (94PS)	9E

*Model illustrated features air conditioning and two-coat pearlescent paint, optional at extra cost.*





Engine availability	Insurance groups (ABI)
1.2i 16v VVT (94PS)	10E
1.2i 16v VVT automatic (94PS)	10E

Model illustrated features two-coat metallic paint, optional at extra cost.



## SE

### Standard features include:

- Driver's and front passenger's front and side-impact airbags
- Anti-lock Braking System (ABS)
- Remote control central deadlocking
- Electronic engine immobiliser
- Speed-sensitive power-assisted steering
- Tilttable steering column
- CD/MP3 CD player/stereo radio (CD 30 MP3)
- Steering wheel mounted audio controls
- Multi-function trip computer
- Pod-mounted rev counter
- Electrically operated front windows
- Electrically adjustable/heated body-colour door mirrors
- Body-colour exterior door handles
- Driver's and front passenger's seat height adjusters
- 60/40 split-folding rear seat back
- DualFloor luggage compartment
- Front fog lights

### Additional features over and above S model:

- Air conditioning
- 15-inch alloy wheels (emergency tyre inflation kit in lieu of spare wheel)
- Dark-tinted glass (excludes windscreen and front door windows)
- Leather-covered steering wheel

## Accessories

Genuine Vauxhall Accessories are the right choice for your Agila. We've only featured a small selection of what's available here, so please check with your Vauxhall retailer for accessory availability information or visit our website at [www.vauxhall.co.uk/accessories](http://www.vauxhall.co.uk/accessories)



**irmscher**

## Styling

Developed in conjunction with auto design specialists Irmscher International, Agila styling accessories perfectly complement the vehicle's lines, as well as being manufactured to the same exacting standards as the car itself. For availability details please ask your Vauxhall retailer.

*Model illustrated left features front skirt extensions, cross hatch grille - black with matt aluminium-effect upper and 'irmscher' logo, front and rear matt aluminium-effect lower skirt inserts, rear roof spoiler and 16-inch Stila alloy wheels.*



### **Irmscher rear roof spoiler.**

Typical of the quality and attention to detail that goes into every Irmscher styling product, the Agila rear roof spoiler is aerodynamically optimised and adds real visual impact.



▼ **Child seats.** Vauxhall offer a range of child seats to suit children from birth to 36kg – around 12 years. The 'Baby Safe' and the 'Kid' use the lap and diagonal seatbelts whilst the 'Duo ISOFIX' (including Top Tether kit) utilises the ISOFIX child restraint fittings, standard on the outer rear seats of Agila.



## VAUXHALL ACCESSORY PACKS

Vauxhall accessory packs bring together a selection of essential accessories at great prices, helping you to protect your car and equipping you for roadside emergencies.



▲ **Privacy shades.** Available for the rear side and tailgate windows, privacy shades provide shade for rear seat passengers and increase security. The tailored fit still allows the rear windows to be opened.



Now you are able to browse all of the Genuine Vauxhall Accessories range with just the click of a button. Scan this QR code with your smartphone for more information. Don't forget to download a QR reader from your app store first.

▼ **Base carrier.** The Vauxhall roof rack system begins with a base carrier. It comprises two T-track bars which support a wide range of attachments from Thule including a bicycle carrier and a choice of high-capacity roof boxes (available separately). Each carrier is provided with locks for security.



▲ ▶ **Protection Pack.**

- Velour mats
- Mudflaps
- Cargo liner



▲ **Rear parking distance sensors.** Activated automatically as you select reverse, this clever system beeps faster the closer you get to an obstruction, changing to a continuous tone at 300mm away.



◀ **Safety Pack.**

- First aid kit
- Warning triangle
- Hi-visibility vest

Agila is available in 10 exterior colours, carefully matched to a range of complementary cloth trims. Choose a combination to match your unique personality.

*Due to the limitations of the printing process, the colours reproduced may vary slightly from the actual paint colour or trim material. As a result, they should be used as a guide only. Your Vauxhall retailer has a comprehensive display of all our paint samples and trim swatches. Vehicle illustrated is a non-specific model.*

**Solid**  
Blaze Red



**Brilliant\***  
Galactic White



**Two-coat metallic\***  
Cornflower Blue



**Two-coat metallic\***  
Steel Silver



**Two-coat metallic\***  
Moroccan Blue



**Two-coat metallic\***  
Meteorite Grey



**Two-coat metallic\***  
Oregano Green



**Two-coat pearlescent\***  
Sugar White



**Two-coat pearlescent\***  
Cosmic Black



**Two-coat pearlescent\***  
Mocha Coffee







▲ Caro – Charcoal

▲ Melt – Charcoal

▲ Melt – Atlanta Blue

▲ Melt – Lemon Tree

**Exterior colours**

**Model, trim name and trim colour**

	Expression Caro cloth	S Melt cloth	SE Melt cloth
<b>Solid</b>			
Blaze Red	Charcoal	Charcoal	Charcoal
<b>Brilliant*</b>			
Galactic White	-	Charcoal, Atlanta Blue or Lemon Tree	-
<b>Two-coat metallic*</b>			
Cornflower Blue	-	Charcoal or Atlanta Blue	Charcoal or Atlanta Blue
Steel Silver	-	Charcoal or Atlanta Blue	Charcoal or Atlanta Blue
Moroccan Blue	-	Atlanta Blue	Atlanta Blue
Meteorite Grey	-	Charcoal or Atlanta Blue	Charcoal or Atlanta Blue
Oregano Green	-	Charcoal	Charcoal
<b>Two-coat pearlescent*</b>			
Sugar White	-	Charcoal, Atlanta Blue or Lemon Tree	Charcoal or Atlanta Blue
Cosmic Black	-	Charcoal or Lemon Tree	Charcoal
Mocha Coffee	-	Charcoal or Lemon Tree	Charcoal

\* = Optional at extra cost. - = Exterior colour listed is not available on this model.



Pedal release system.



Deactivation for front passenger's airbags.

## Safety

**Standard features** • Driver's airbag • Front passenger's airbag • Front seat side-impact airbags • Energy-absorbing steering column • Pedal release system – Reduces potential injury to the driver's legs and feet during a severe frontal impact • Laminated windscreen • Reinforced passenger safety cell • Deformation zones front and rear • Fuel tank located ahead of rear wheels

• ISOFIX child seat restraint system for outer rear seats incorporating top tether (does not include child seat) – Secures specially designed ISOFIX child safety seats to the vehicle itself, virtually eliminating the dangers that can result from improper installation. Top tether enables the top of the child seat to be attached to the seat back, securing the child even more firmly • Child-proof locks on rear doors

• Anti-lock Braking System (ABS) • Emergency Brake Assist (EBA) – Increases brake force applied in emergency braking situations

• Front body-lock seatbelt pretensioner system – Tightens the seatbelt during the early stages of a frontal impact • Driver's and front passenger's seatbelt force limiters – Reduces potential upper body injuries during a frontal impact • Height-adjustable front seatbelts

• Three inertia-reel lap and diagonal rear seatbelts • Height-adjustable front seat head restraints • Height-adjustable outer rear seat head restraints • Driver's seatbelt unfastened warning light

### Additional features

Deactivation for front passenger's airbags

Electronic Stability Programme-plus (ESP-plus) incorporating switchable traction control

Expression

S

SE

○

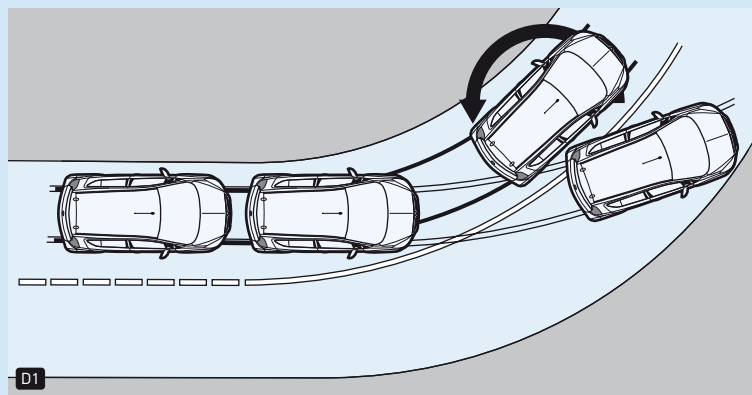
●

●

○

○

○



### Electronic Stability Programme-plus (ESP-plus)

**D1.** ESP-plus provides enhanced yaw compensation during understeer or oversteer. It works by monitoring the front and rear of the car and comparing their respective directions of travel with the input through the steering wheel. If the vehicle starts to slide, ESP-plus applies corrective braking to the appropriate wheel, or wheels, compensating for the slide and helping you regain control more rapidly. ESP-plus offers additional safety in the form of two-way traction control, which helps prevent the driving wheels from spinning, under acceleration, on slippery surfaces.



## Security

**Standard features** • Electronic theft protection for audio equipment • Visible Vehicle Identification Number (VIN) • 'Key left in ignition' audible warning • Electronic engine deadlock immobiliser • Internal release handle for fuel filler flap • Removable luggage compartment cover

<b>Additional feature</b>	Expression	S	SE
Remote control two-stage central locking with security deadlocks (includes tailgate and internal control button for doors)		●	●

## Heating and ventilation

**Standard features** • Air blend heater with four-speed fan and illuminated controls • Interior pollen filter • Air recirculation system • Side window demist vents and four adjustable face-level air vents

<b>Additional feature</b>	Expression	S	SE
Air conditioning		○	●

## Facia, instruments and controls

**Standard features** • Three-spoke steering wheel • Trip odometer • Multi-function display panel showing time, mileage and fuel level • Digital clock • Service-due indicator • Low fuel level warning light • Glovebox with lid • Electrical accessory socket

<b>Additional features</b>	Expression	S	SE
Tiltable steering column		●	●
Multi-function trip computer incorporating instantaneous/average fuel consumption and range remaining		●	●
Outside air temperature display incorporating ice warning function		●	●
Variable instrument panel illumination		●	●
Pod-mounted rev counter		●	●
Leather-covered steering wheel			●

## Seating

<b>Features</b>	Expression	S	SE
Driver's and front passenger's seat height adjusters		●	●
Map pocket on driver's seat back		●	●
Foldable one-piece rear seat backrest with one-touch operation	●		
60/40 split-folding flat rear seat – creates a flat load floor		●	●



Tiltable steering column.

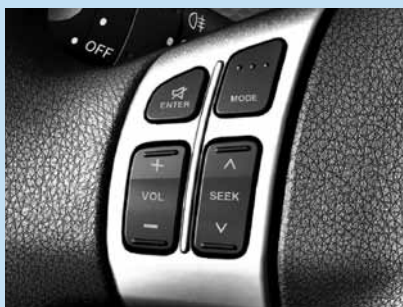


60/40 split-folding flat rear seat.

● = Standard equipment.  
○ = Optional at extra cost.



Concealed 35-litre storage area.



Steering wheel mounted audio controls.

## Additional interior features

**Standard features** • Dipping rear-view mirror • Twin sunvisors • Front door pockets with one-litre bottle holder • Storage compartment with coin holders and lid on top of fascia • Storage shelf on passenger's side of fascia • Carpeted passenger compartment • Trimmed and illuminated luggage compartment • Front passenger's tiltable assist handle • Fade down courtesy light operated by door switches • Drinks holder in front centre console • 1.5 litre bottle holder in rear centre console

<b>Additional features</b>	Expression	S	SE
Silver-effect interior door handles		●	●
Silver-effect gear knob insert and handbrake button		●	●
Silver-effect centre console surround with Charcoal or Atlanta Blue seat trim		●	●
Colour-keyed (Lemon) centre console surround with Lemon Tree seat trim		●	
Colour-keyed door trim insert panels		●	●
Colour-keyed (Blue) fascia panel with Atlanta Blue seat trim		●	●
Driver's sunvisor with vanity mirror and cover		●	●
Rear passenger's tiltable assist handles with coat hook		●	●
Driver's sunglasses holder		●	●
DualFloor luggage compartment with concealed 35-litre storage area		●	●

## Audio equipment

<b>Features</b>	Expression	S	SE
<b>CD/MP3 CD player/stereo radio (CD 30 MP3)</b> • CD/MP3 CD player • LW/AM/FM stereo radio with 30 station presets • RDS with Traffic Programme • 17 watts per channel output • 4 speakers	●	●	●
Steering wheel mounted audio controls		●	●
Roof-mounted radio aerial	●	●	●

## Exterior protection and styling

<b>Features</b>	Expression	S	SE
Body-colour bumpers	●	●	●
Body-colour tailgate handle	●	●	●
Body-colour door mirrors		●	●
Body-colour door handles		●	●
Black foil on door pillars		●	●



## Exterior and convenience features

**Standard features** • Hazard warning lights and side repeat indicators • Lights-on audible warning • Electric headlight beam levelling • White front turn indicators • High-level centre brake light • Tinted glass • Foldable door mirrors • Twin-jet windscreen washer nozzles • Two-speed windscreen wipers • Intermittent facility for windscreen wipers • Heated rear window • Rear window wash/wipe with intermittent facility • Touch-sensitive tailgate release

### Additional features

	Expression	S	SE
Electrically adjustable/heated door mirrors		●	●
Front fog lights		●	●
Dark-tinted glass (excludes windscreen and front door windows)			●
Electrically operated front windows with driver's side one-touch down facility		●	●

## Mechanical

### Features

	Expression	S	SE
Speed-sensitive electric power-assisted steering	●	●	●
Five-speed manual gearbox	●	●	●
Four-speed automatic transmission		○	○

## Wheels and tyres

### Features

	Expression	S	SE
14-inch steel wheels with full-size wheel trims and 165/70 R 14 low profile tyres <b>W1</b>	●		
15-inch steel wheels with full-size wheel trims and 185/60 R 15 low profile tyres <b>W2</b>		●	
15-inch alloy wheels with locking wheel bolts and 185/60 R 15 low profile tyres <b>W3</b>			●
Emergency tyre inflation kit in lieu of space-saver spare wheel and tyre	●	●	●



Expression wheel trim.



S wheel trim.



SE alloy wheel.

Vauxhall supporting



### Smarter driving tips

- Drive at an appropriate speed:** Staying within the speed limit increases driver safety, reduces CO<sub>2</sub> emissions and saves fuel. At 70mph you could be using up to 9% more fuel than at 60mph and up to 15% more fuel than at 50mph
- Drive smoothly at all times:** Anticipate the ebb and flow of the traffic to avoid harsh acceleration and braking
- Reduce your revs:** Change gear earlier to help reduce fuel consumption – try 2500rpm with petrol engines
- Idling is wasting fuel:** If you're likely to be at a standstill for more than three minutes, switch off the engine to save fuel
- Regularly check your tyre pressures:** Under inflated tyres increase CO<sub>2</sub> emissions whilst incorrectly inflated tyres can be unsafe. Always check your handbook for the correct tyre pressure. This will also help to increase the life of your tyres
- Remove unnecessary items from the car:** Extra weight increases the engine's workload, whilst roof racks and bike carriers increase wind resistance. All burn more fuel and increase CO<sub>2</sub> emissions

## Engines

	1.0i 12v ecoFLEX	1.2i 16v VVT
Fuel type	Petrol	Petrol
Capacity	996cc	1242cc
Maximum power	68PS (50kW) @ 6000rpm	94PS (69kW) @ 6000rpm
Maximum torque	90Nm (66 lb.ft.) @ 4800rpm	118Nm (87 lb.ft.) @ 4800rpm
Configuration	3 cylinders, 4 valves per cylinder, double overhead camshafts	4 cylinders, 4 valves per cylinder, double overhead camshafts with Variable Valve Timing
Fuel/induction system	Multi-point sequential electronic fuel injection	
Emission compliance	Euro 5	
Service interval	10,000 miles or 1 year (whichever occurs sooner)	
<b>Benefit in kind company car taxation – 2012/13 tax year</b>		
Manual	12%	14%
Automatic	–	17%

## Performance, fuel economy, emissions and VED rates

Model	Performance*		Fuel economy mpg (litres/100km)			CO <sub>2</sub> emissions (g/km)	VED**	
	Maximum speed (mph)	Acceleration 0-62mph (secs)	Urban driving	Extra-urban driving	Combined figure		First year rate	Standard rate
1.0i 12v ecoFLEX	99	14.7	50.4 (5.6)	67.3 (4.2)	60.1 (4.7)	109	£0	£20
1.2i 16v VVT ecoFLEX manual	109	12.0	46.3 (6.1)	62.8 (4.5)	55.4 (5.1)	118	£0	£30
1.2i 16v VVT automatic	106	14.0	40.9 (6.9)	56.5 (5.0)	49.6 (5.7)	131	£120	£120

\* = Manufacturer's figures. \*\* VED = Vehicle Excise Duty, Correct at time of publication (April 2012).

Fuel consumption and CO<sub>2</sub> emission data complies with the relevant EU testing regulations used by vehicle manufacturers to enable comparisons between different models. **Important:** Please note fuel consumption can be affected by many factors including driving style, road and traffic conditions, vehicle mileage and standard of maintenance. In addition these results relate to the particular vehicle tested, inevitably there will be differences between individual vehicles of the same model.

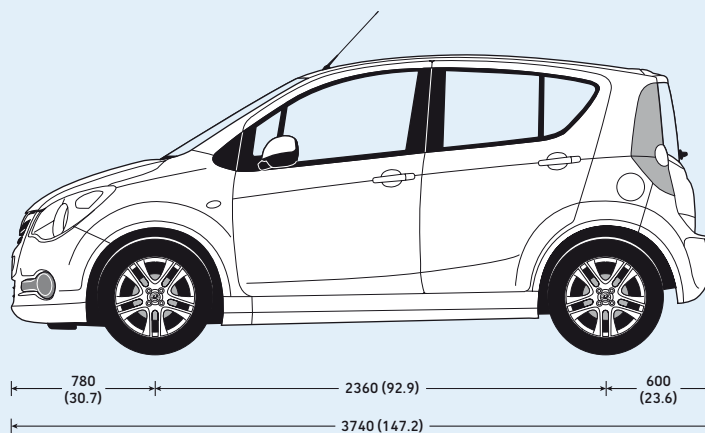
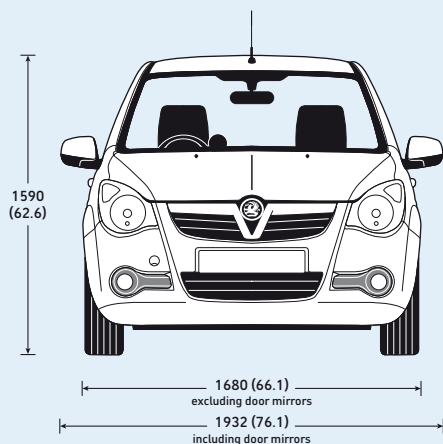
## Weights and towing data (kg)

	Gross vehicle weight	Maximum towing weights Trailer with brakes (without brakes)
1.0i 12v ecoFLEX	1485	–
1.2i 16v VVT	1485	200 (200)

**Please note:** For models fitted with air conditioning 10kg must be added to gross vehicle weight. **Gross vehicle weight** is the total permissible weight of the vehicle including passengers and their luggage. The **maximum roof rack loading** should not exceed a total of 35kg. The **maximum towing weight** is based on the ability of the car – with two occupants of 75kg each – to restart on a 12% gradient, which is approximately 1 in 8.3, at sea level. At altitudes above 1500 metres, the engine output may drop with a corresponding reduction in towing capability. Any extra weight, such as luggage or additional passengers, should be deducted from the maximum towing weight. With a trailer fully loaded, **maximum noseweight** should not exceed 50kg. Always fit Vauxhall roof carrier systems and towing accessories available from your Vauxhall retailer. They are designed specifically for Vauxhall models and carry a 12-month guarantee.



## Exterior dimensions millimetres (inches)



## Vauxhall Assistance and warranties



See back cover for details of our comprehensive warranties.

## Body

- Aerodynamic drag co-efficient: Cd 0.32

## Steering

- Speed-sensitive electric power-assisted rack and pinion system
- Energy-absorbing steering column
- Turning circle (kerb-to-kerb): 9.60m (31.5ft)
- Turns lock-to-lock: 3.2

## Suspension

**Front:** Independent. MacPherson struts with gas-pressure dampers and linear-rate coil springs. Anti-roll bar.

**Rear:** Torsion beam with gas-pressure dampers and linear-rate coil springs.

## Fuel tank capacity

- 45 litres (9.9 gallons)

## Brakes

- Anti-lock Braking System (ABS)
- Dual circuit, diagonally split, servo-assisted system
- Asbestos-free friction material
- Corrosion-protected brake pipes

### All models

Front ventilated discs: 252mm diameter

Rear drums: 200mm diameter

## Luggage capacities (ECIE method)

	litres	cu.ft.
Rear seat up*	225	7.9
Rear seat down**	660	23.3
Rear seat down†	1050	37.1

\* = Under luggage compartment cover.

\*\* = To upper edge of front seat back.

† = Measured to roof.

## Loadspace dimensions (maximum)

	mm	inches
Load floor length (rear seats folded)	1250	49.2
Load floor length (behind rear seats)	610	24.0
Load area width	1004	39.5
Load area height	960	37.8
Tailgate aperture width (maximum)	1000	39.4
Tailgate aperture height	707	27.8

# Trust Vauxhall

## Vauxhall Insurance

Available for new and used Vauxhalls, a Vauxhall Insurance policy offers a unique package designed specifically for Vauxhall drivers. For a highly competitive quotation, call **0844 463 2670**. Or just visit our website at [www.vauxhall.co.uk](http://www.vauxhall.co.uk)

## Fleet Customer Services

Our dedicated support services for fleet managers includes factory demonstrators, a three-day test drive programme and information on whole life costs, company car taxation and finance. For further information please call **0870 010 0651**.



## Servicing and maintenance

The best way to maximise the performance and reliability of your Vauxhall is to have all routine servicing and maintenance carried out at one of around 400 Vauxhall retailers. To find your nearest retailer call **0845 600 1500**.

## In the event of an accident...

Vauxhall Accident Support helps keep you mobile following an accident. Benefits include scene-of-accident advice, message service, assistance with claims and vehicle recovery. For further details call **0800 010 304**.

## Proud Sponsor of Home Nations Football



## For more information...

For a brochure on any Vauxhall model (up to a maximum of three per caller) or location of your nearest Vauxhall retailer please call **0845 600 1500**.

Alternatively, details can be found on our website at [www.vauxhall.co.uk](http://www.vauxhall.co.uk)

Join us online:



Scan this QR code with your smartphone for more information. Don't forget to download a QR reader from your app store first.

## Vauxhall Lifetime Warranty

We're so confident in Vauxhall quality and reliability that we are now able to offer a lifetime warranty. Available to the first owner of all new Vauxhall passenger cars, it's valid for the lifetime of the vehicle up to a maximum of 100,000 miles\*. In addition, our warranty also includes Vauxhall Assistance for 12 months from first registration and six years body panel anti-perforation warranty. Full details of Vauxhall's warranties including terms, conditions and exclusions can be obtained through any authorised Vauxhall retailer or go to: [www.vauxhall.co.uk/warranty](http://www.vauxhall.co.uk/warranty)

**LIFETIME**  
WARRANTY 100,000 MILE

\*Vauxhall Lifetime Warranty covers lifetime ownership of first car owner, 100,000 mile limit, annual check required. The warranty excludes wear and tear and serviceable items and the vehicle must be serviced in accordance with the manufacturer's servicing schedule to continue the lifetime warranty. Terms and conditions apply. Offer available to all Vauxhall passenger cars (this offer does not apply to car-derived vans) from 1st August 2010.

Every effort has been made to ensure that the contents of this publication were accurate and up-to-date at the time of going to press (March 2012). Vauxhall vehicles are equipped with components manufactured by various General Motors operating units and outside suppliers. The Company reserves the right to alter specifications and withdraw products from sale without notice. Any such alterations will be notified to Vauxhall retailers at the earliest opportunity, please consult your local retailer for the latest information. The specifications detailed within this brochure are not necessarily applicable to alternative models such as Special Editions. Details of any such models will be contained in specific literature or found on the Vauxhall website. Please note that Vauxhall retailers are not the agents of General Motors UK Limited and are not authorised to bind the Company by any specific or implied undertaking or representation. It is advisable to ensure that your motor insurance policy provides adequate cover for additional fitted options and accessories. Please note accessories shown are for illustrative purposes only. As part of Vauxhall's policy of environmental care, this brochure is printed on paper manufactured using Elemental Chlorine Free pulps from specially farmed, sustainable timber resources. All rights reserved. No part of this publication may be reproduced in any form or by any means, without the prior written permission of General Motors UK Limited.



**VAUXHALL**